

Designed & Manufactured by Seiki Screen Systems™

Marketed & Distributed by Phantom Screens®



Seiki Screen Systems



***Please read entire manual
before beginning installation.***

Installation Manual for

Vista PLUS
SCREEN
RETRACTABLE®

For Left Hinged Doors
(Not for use on sliding patio doors)

Durable. Reliable. Attractive.
For door openings up to 36" (914 mm) wide
and 81 1/4" (2,064 mm) high

**Quick and
Easy to Size
and Install**



Congratulations and thank you for purchasing a Vista Plus Screen!

The Vista Plus retractable screen is designed and manufactured by Seiki Screen Systems, one of Japan's largest and most respected manufacturers. Thanks to rigorous design and product testing, the Vista Plus screen will provide years of dependable operation. Plus, it comes with a factory supplied limited lifetime warranty on all parts against manufacturer's defects.

The Vista Plus screen was designed for easy sizing and installation. This Installation Manual provides a step by step guide through the entire process.

Any questions? Contact our Toll Free Help Line at
1-866-333-8868.



Vista Plus Limited Lifetime/Non-transferable Manufacturer's Warranty

The Vista Plus Screen is warranted by Seiki Screen Systems to be free of manufacturer's defects in materials or workmanship, for as long as the original purchaser owns and/or resides at that residence and that the product remains at its original point of installation. Seiki Screen Systems will repair or replace at its discretion any component, within the terms and conditions of this warranty, which is deemed as being defective from the manufacturing process upon proof of purchase. This warranty excludes the screen mesh.

Furthermore, this warranty does not cover components damaged through improper use or installation, or if components have been altered from their original state in a manner not otherwise prescribed in this manual. This warranty is strictly limited to defective components only. This non-transferable, limited warranty excludes labor, breakage or damage due to normal wear and tear, lack of maintenance, or use for other than residential applications, accidents and "acts of God".

Replacements or repairs made subject to this limited warranty are otherwise warranted for the balance of the original warranty period. Seiki Screen Systems' liability under this limited warranty is restricted to the corrective actions as set forth herein and contrarily repudiates all incidental and consequential damage. It is the responsibility of the consumer to notify Seiki Screen Systems of missing components, within 30 days of the purchase of the Vista Plus Screen.

The Vista Plus Screen is designed to assist in keeping unwanted insects from the home; it is in no way intended as a safety or security device to prevent access or exit by individuals, animals or small children. Liability for any damages, including but not limited to general, special, indirect, incidental, consequential, aggravated, punitive or exemplary damages, and economic loss, as well as for breach of any expressed or implied warranties, including but not limited to implied warranties of merchantability, quality and fitness for any purpose other than as prescribed herein, is disavowed and omitted here from, to the extent that such a disclaimer and preclusions are permitted by the laws of any particular jurisdiction.

Maintenance: Keep Bottom Rail clean and free of debris. Periodic use of silicone spray to the inside of the Top Rail, the Bottom Rail, and the Retracting Mesh Guide is recommended; do not use petroleum-based lubricants.

Vista Plus Screen
Designed and Manufactured by Seiki Screen Systems
Marketed and Distributed by Phantom Screens
PRODUCT INFORMATION MANUAL
For warranty claims
Call 1-866-333-8868

Service and Maintenance **Hints**

The Vista Plus Screen is designed and engineered to be maintenance free. The following are some helpful hints to ensure the smooth operation of your Vista Plus Screen for years to come.

- The moving components used in the screen contain nylon. This combination of compounds is strong, impact resistant, and self-lubricating. Do not use oil, grease, petroleum or oil based sprays or lubricants on any of the components of the screen. These products attract dirt and debris, which may affect the operation of the Vista Plus Screen. However, the periodic application of a dry silicone lubricant to the moving parts is permissible.
- We recommend that when the screen is not required, it should be stored away in the Screen Housing. This will extend the life of the mesh and keep it clean.
- The Bottom Rail should be kept free of dirt and debris. Use a broom to remove any obstructions from the Bottom Rail.
- If the screen mesh becomes damaged or torn, a Replacement Mesh Cartridge can be purchased separately through the help line.

If you have any questions during the installation of the Vista Plus Screen, please call toll free:

1-866-333-8868

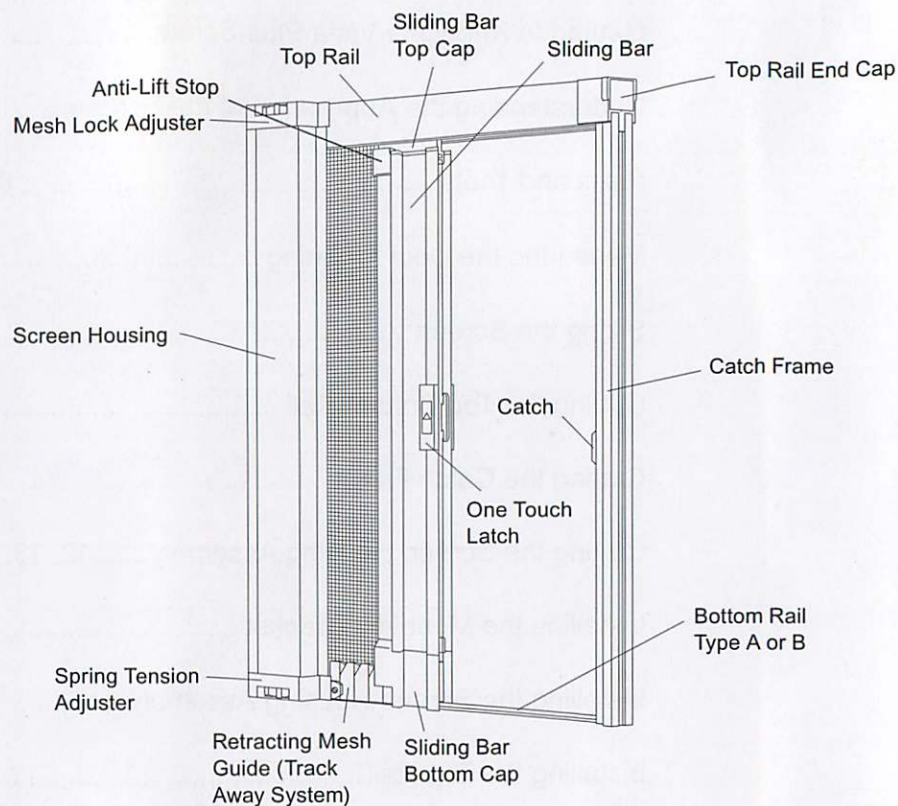


Index

Getting to Know the Vista Plus Screen	4
Understanding the Application of the Screen.....	5
Parts and Tools	6, 7
Measuring the Door Opening	8
Sizing the Screen	9
Cutting the Top/Bottom Rail	10
Cutting the Catch Frame	11
Cutting the Screen Housing Assembly.....	12, 13, 14
Installing the Mounting Bracket	15
Installing the Screen Housing Assembly	16
Installing the Top Rail	17
Installing the Catch Frame.....	18
Installing the Bottom Rail.....	19
Final Adjustments.....	20, 21
Service and Maintenance, Warranty	22, 23

Getting to Know the Vista Plus Screen

Before beginning the installation process, become familiar with the screen and the door on which it will be installed.



! ATTENTION !

Insect screens are intended to provide reasonable insect control and are not intended to provide security or retention of objects, animals or persons.

Final Adjustments

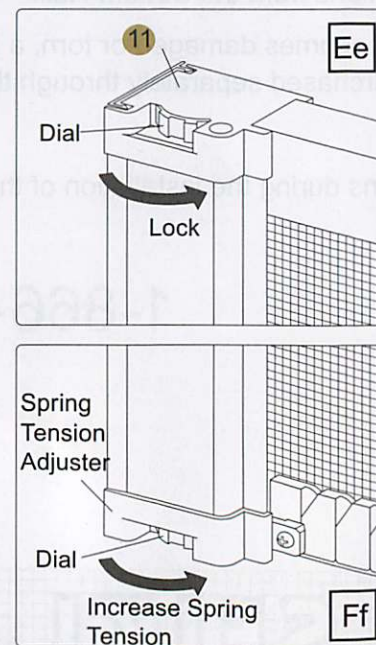
Adjusting the Mesh

The screen can be adjusted to reduce the amount of mesh discharged from the Screen Housing. This keeps the mesh tight, providing protection against insects.

1. Close the screen.
2. Turn the dial on the Mesh Lock Adjuster **11** as indicated in illustration **Ee** until you meet resistance, but do not over-tighten.

Adjusting Spring Tension

1. If the screen does not retract fully or quickly enough, turn the dial on the Spring Tension Adjuster, as indicated in illustration **Ff**, to increase spring tension.
2. If the screen retracts too quickly, turn the dial on the Spring Tension Adjuster in the opposite direction to reduce spring tension.

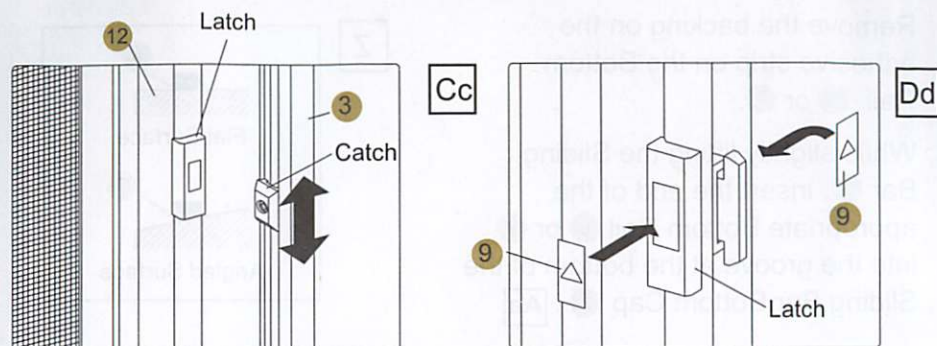


Congratulations! You have now installed
your Vista Plus Screen!

Final Adjustments

Adjusting the Catch

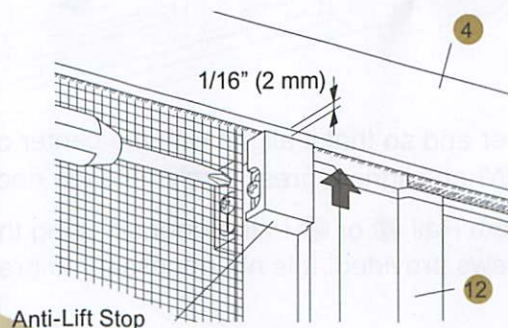
1. Loosen the screw on the Catch.
2. Move the Catch up and down until the Latch makes a secure contact with the Catch. Tighten the screw on the Catch to secure it in place. **Cc**
3. Adhere the Stickers **9** to the front and rear of the Latch as indicated. **Dd**



Adjust the Anti-Lift Stop

Loosen the set screws on the Anti-Lift Stop on both sides of the mesh, slide it upward until it is positioned approximately 1/16" (2 mm) from the underside of the Top Rail **4**, and tighten the set screws to secure in place.

NOTE: The function of the Anti-Lift Stop is to reduce vertical travel of the Sliding Bar which may cause it to derail from the Bottom Rail **6** or **7**. Observe the position of the Anti-Lift Stop to the Top Rail **4**. Should it come in contact with the Top Rail **4** at any point throughout the opening, loosen the screw and adjust to allow 1/16" (2 mm) clearance.



Understanding the Application of the Screen

Is there enough Mounting Surface for the screen?

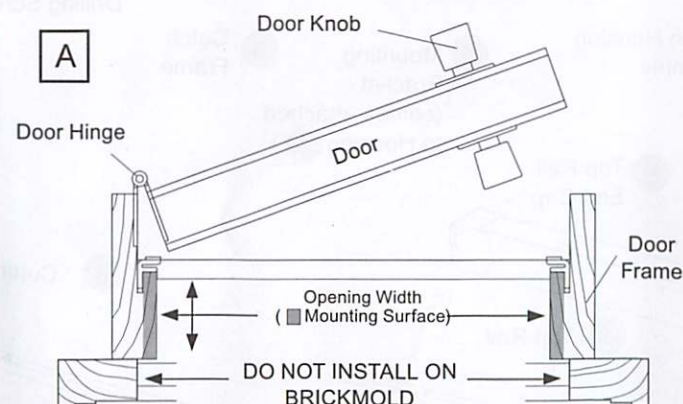
The screen installs on the inside surface of the door frame (Mounting Surface) as indicated in diagram **A**. A minimum of 1 5/8" (42 mm) is required.

Is the Door Opening Square?

For the screen to operate effectively, the door opening must be perfectly square. Using a Carpenter Square, check to ensure that the door frame is square. If not, use shims to bring the door frame to square before beginning installation. If shimming the door frame is not possible, apply shims beneath the screens' components to ensure a plumb, level and square installation.

Is this screen being installed on a Left Hinged Door?

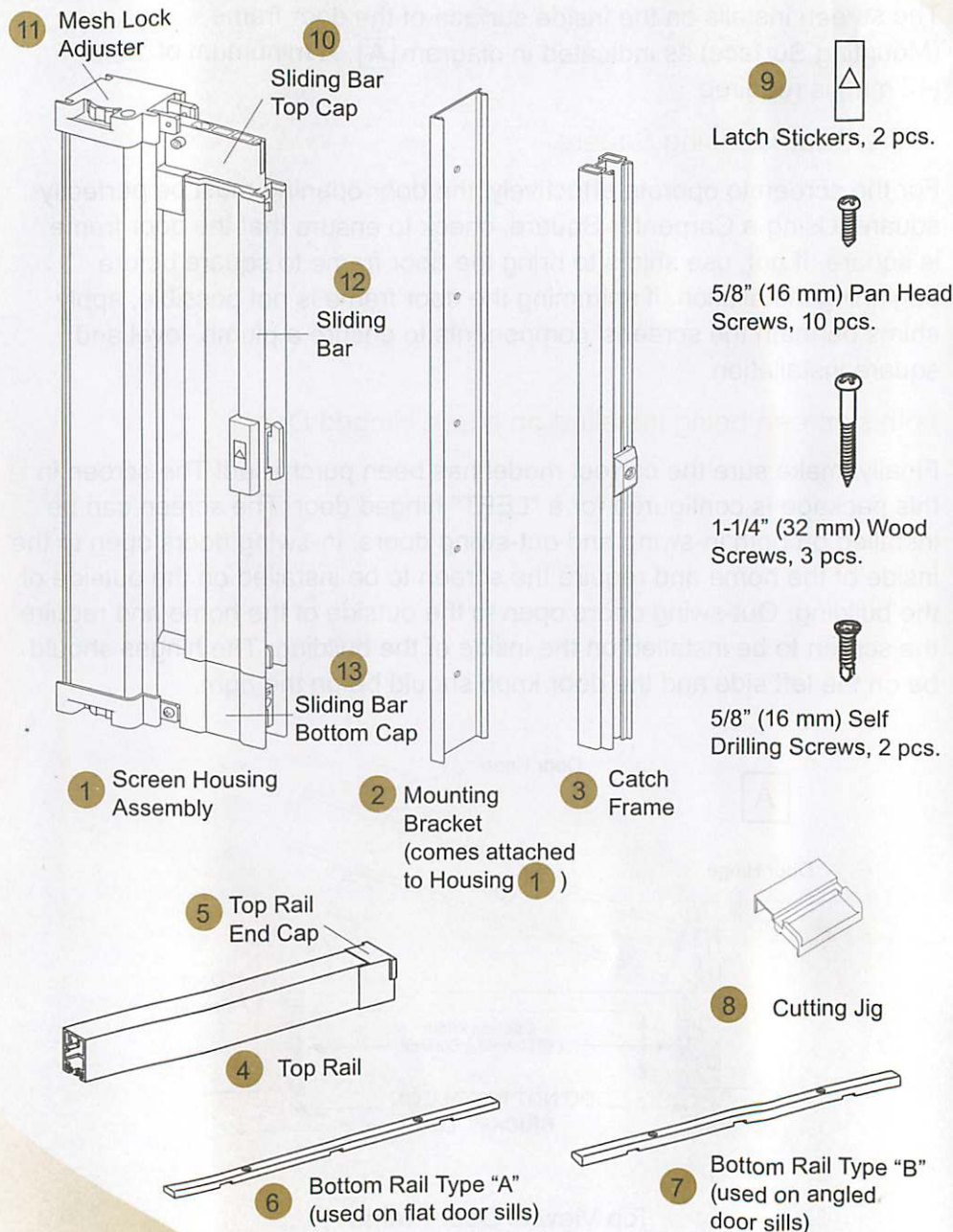
Finally, make sure the correct model has been purchased! The screen in this package is configured for a "LEFT" hinged door. The screen can be installed on both in-swing and out-swing doors. In-swing doors open to the inside of the home and require the screen to be installed on the outside of the building. Out-swing doors open to the outside of the home and require the screen to be installed on the inside of the building. The hinges should be on the left side and the door knob should be on the right.



Top View of Door Frame

Parts

The following parts are included with your Vista Plus Screen.

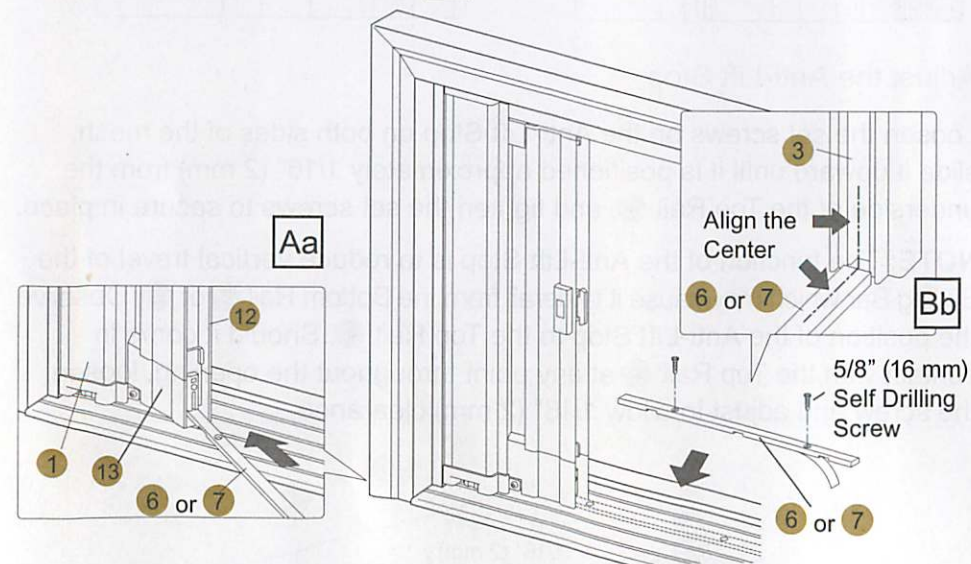
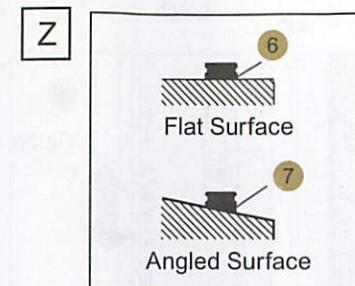


Installing the Bottom Rail

If the Bottom Rail 6 or 7 did not require cutting, it is important to select the correct Bottom Rail for installation. The Vista Plus package comes with two Bottom Rails to accommodate both flat and angled door sills. Please refer to Z to determine the correct Bottom Rail.

NOTE: If using Bottom Rail 7 (Angled Bottom Rail), ensure that it is oriented so that the top is flat and level when placed on the door sill.

1. Remove the backing on the adhesive strip on the Bottom Rail 6 or 7.
2. While slightly lifting the Sliding Bar 12, insert the end of the appropriate Bottom Rail 6 or 7 into the groove at the bottom of the Sliding Bar Bottom Cap 13. Aa

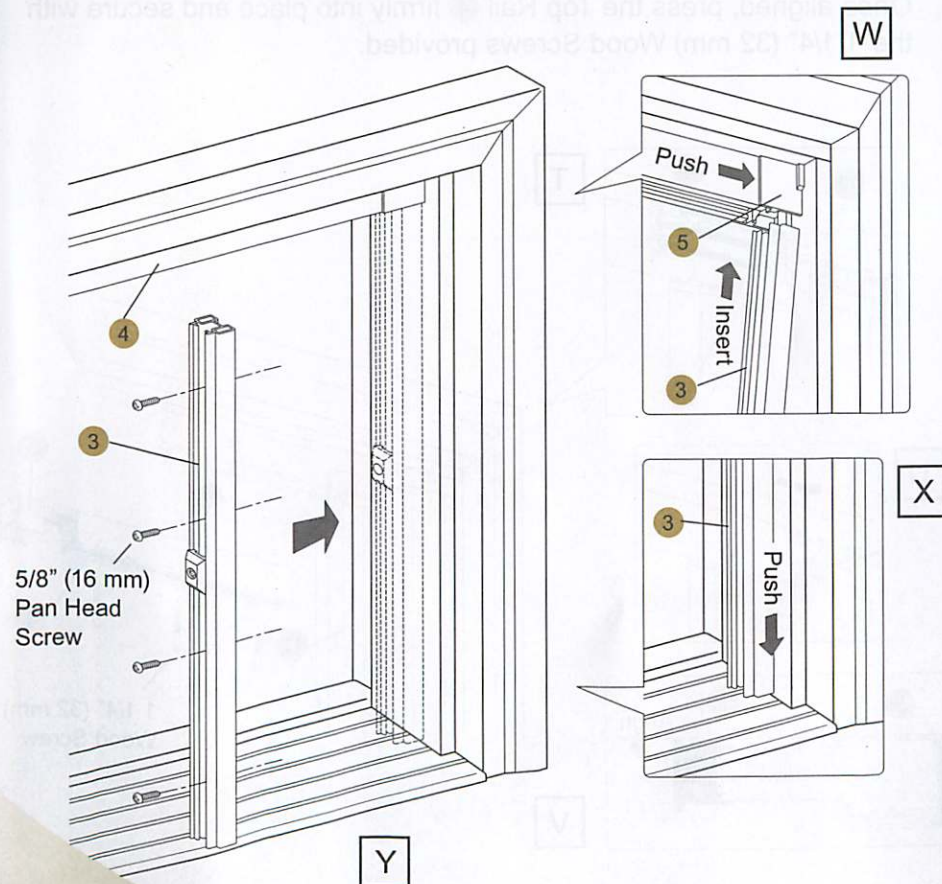


3. Position the other end so that it aligns with the center of the Catch Frame 3. Bb When aligned, press firmly onto the door sill.
4. Fasten the Bottom Rail 6 or 7 to the door sill using the 5/8" (16mm) Self Drilling Screws provided. It is not necessary to pre-drill the surface below.

Installing the Catch Frame

Installing the Catch Frame

1. Insert the Catch Frame **3** into the bottom of the Top Rail End Cap **5**. Ensure that the Top Rail End Cap **5** fits tight to the right side of the door frame. **W**
2. Using a level, adjust the Catch Frame **3** along the mounting surface of the door frame to ensure that it is positioned plumb. It is important that the bottom of the Catch Frame **3** fits tight to the door sill. **X**
3. Attach the Catch Frame **3** to the door frame using the 5/8" (16 mm) Pan Head Screws provided. **Y**



Tools

The following tools will be required for this install.

Metal File



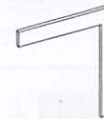
Measuring Tape



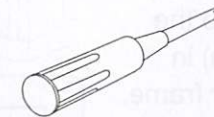
Safety Glasses



Carpenter Square



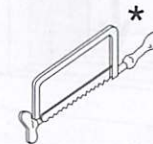
Philips Screwdriver



Electric Drill



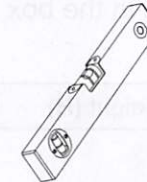
Hack Saw
32 TPI



Pen



Level



*** NOTE:** a chop saw can be used in place of a hack saw provided that a bi-metal blade has been properly installed.

! WARNING

Improper use of hand or power tools can result in personal injury and/or product damage. Follow equipment manufacturer's instructions for safe operation. Always wear safety glasses.

Measuring the Door Opening

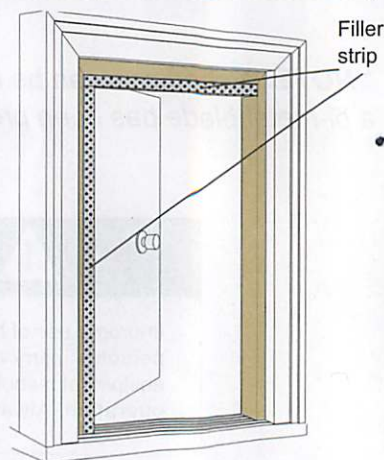
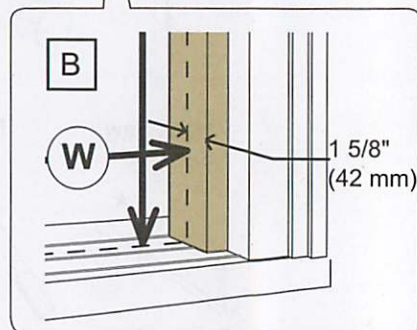
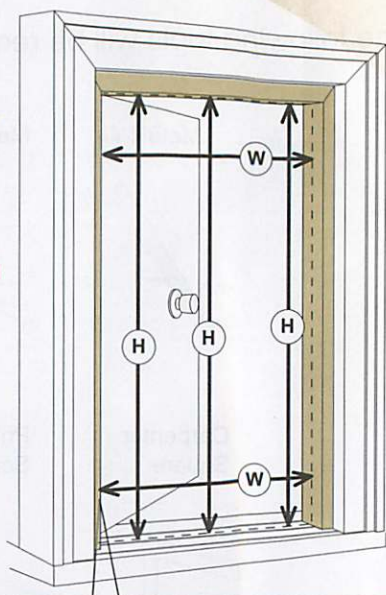
The screen will accommodate a door opening of up to 36" (914 mm) wide and 81 1/4" (2,064 mm) high. If the door opening is smaller than this, the screen must be cut.

For the width (W), measure the dimension between the right and left sides of the door frame at both the top and bottom of the doorway as indicated in the diagram. Record the smallest of the two sizes in the box labeled "Width" below.

For the height (H), measure from the top underside of the door frame to the door sill at 3 points 1 5/8" (42 mm) in from the outside edge of the door frame. (See picture **B**). This is where the back of the screen will be located. Measure in all three locations and record the smallest dimension in the box labeled "Height" below.

Width (W)	Height (H)

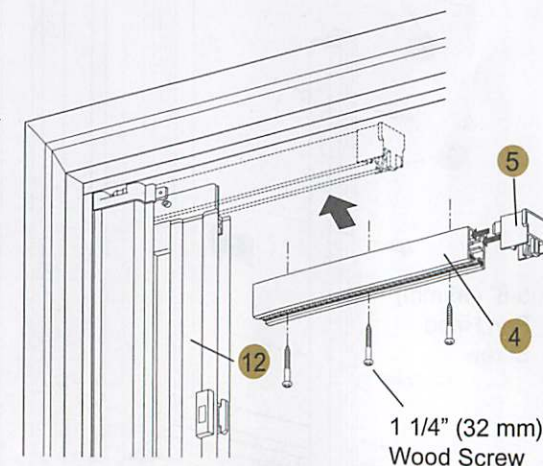
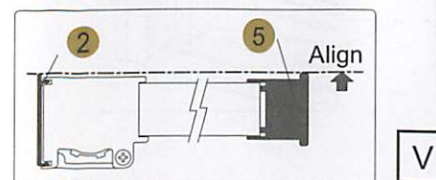
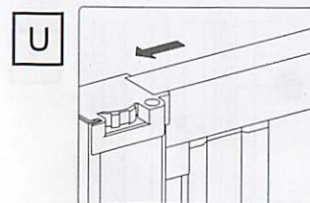
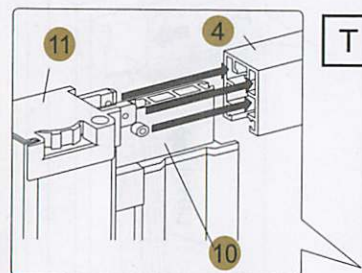
NOTE: If the door opening is too high, or too wide, filler strips (not available from SEIKI) must be used to reduce the opening. All measurements must be made after the filler strip has been installed.



Installing the Top Rail

Installing the Top Rail

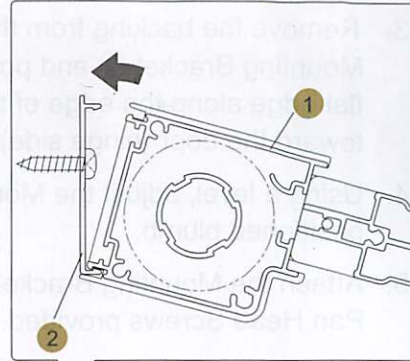
1. Remove the backing from the adhesive strip on the Top Rail **4**.
2. Insert the Top Rail End Cap **5** onto the end of the Top Rail **4**. Place the uncapped end of the Top Rail **4** over the Sliding Bar Top Cap **10** and slide the Top Rail **4** into the Mesh Lock Adjuster **11**. **T** Ensure that it fits tightly. **U**
3. Align the Top Rail **4** so that the edge of the Top Rail End Cap **5** closest to the door is in a straight line to the "L" shaped edge of the Mounting Bracket **2**. **V** This line should be at a 90° angle to the mounting surface on which the Mounting Bracket **2** was attached. Once aligned, press the Top Rail **4** firmly into place and secure with the 1 1/4" (32 mm) Wood Screws provided.



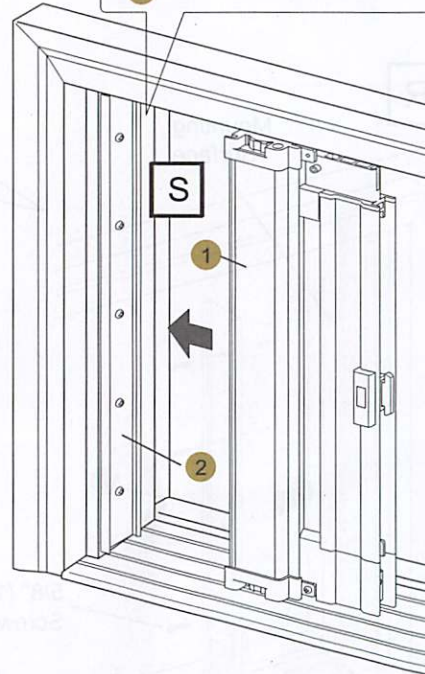
Installing the Screen Housing Assembly

Attaching the Screen Housing Assembly

1. Place the front left corner of the Screen Housing Assembly **1** in the flat edge of Mounting Bracket **2** (furthest away from the door). **[S]** Pivot Screen Housing along this point until the back of the Assembly snaps into the "L" shaped edge.



NOTE: Should you need to remove the screen, simply insert a flat head screw driver between the Screen Housing Assembly and Mounting Bracket at the bottom and twist the screw driver, moving it upward between the two components until it snaps off.



Sizing the Screen

If the door opening is smaller than 36" (914 mm) wide and 81 1/4" (2,064 mm) high, the screen must be cut.

NOTE: Actual Vista Plus components are designed with offset dimensions to fit a 36" (914 mm) x 81 1/4" (2,064 mm) opening; therefore parts will not measure the same as these doorway dimensions. To fit a smaller opening, determine the Length to be Cut from the components by calculating the difference between your doorway measurements and the standard 36" (914 mm) x 81 1/4" (2,064 mm) height.

Determining Length to be Cut from Top Rail **4** and Bottom Rail **6** or **7** *

Use the following formula:

	(Measured Width)	[Length to be cut off]
36" (914 mm)	- [=]

Determining Length to be Cut from Screen Housing Assembly **1** and Catch Frame **3**

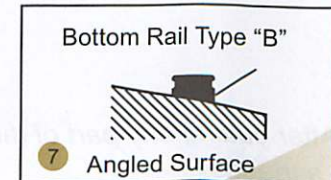
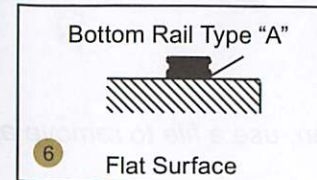
Use the following formula:

	(Measured Height)	[Length to be cut off]
81 1/4" (2064 mm)	- [=]

* Choosing the Bottom Rail

Before cutting, it is important to select the correct Bottom Rail for installation. The screen package comes with two Bottom Rails to accommodate both flat and angled door sills. Please refer to **[C]** to determine the correct Bottom Rail.

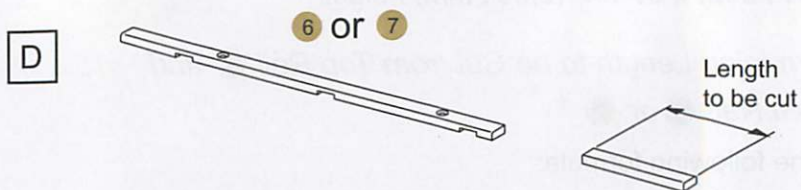
[C]



Cutting the Top and Bottom Rail

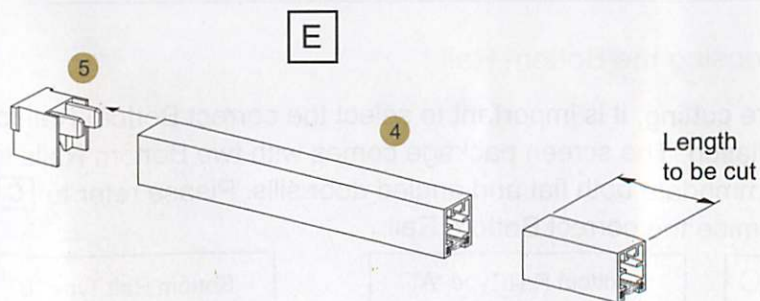
Cutting the Bottom Rail

1. Use the "Length to be Cut" dimension calculated for Top Rail ④ and Bottom Rail ⑥ or ⑦ (See Choosing Bottom Rail on Page 9).
2. Cut straight through Bottom Rail ⑥ or ⑦. **[D]**



Cutting the Top Rail

1. Using the same "Length to be Cut" dimension for Top Rail ④ and Bottom Rail ⑥ or ⑦ on Page 9, measure the Top Rail ④ on the end opposite Top Rail End Cap ⑤. Mark all sides to ensure an even cut.
2. Remove Top Rail End Cap ⑤. Cut straight through Top Rail ④. **[E]**

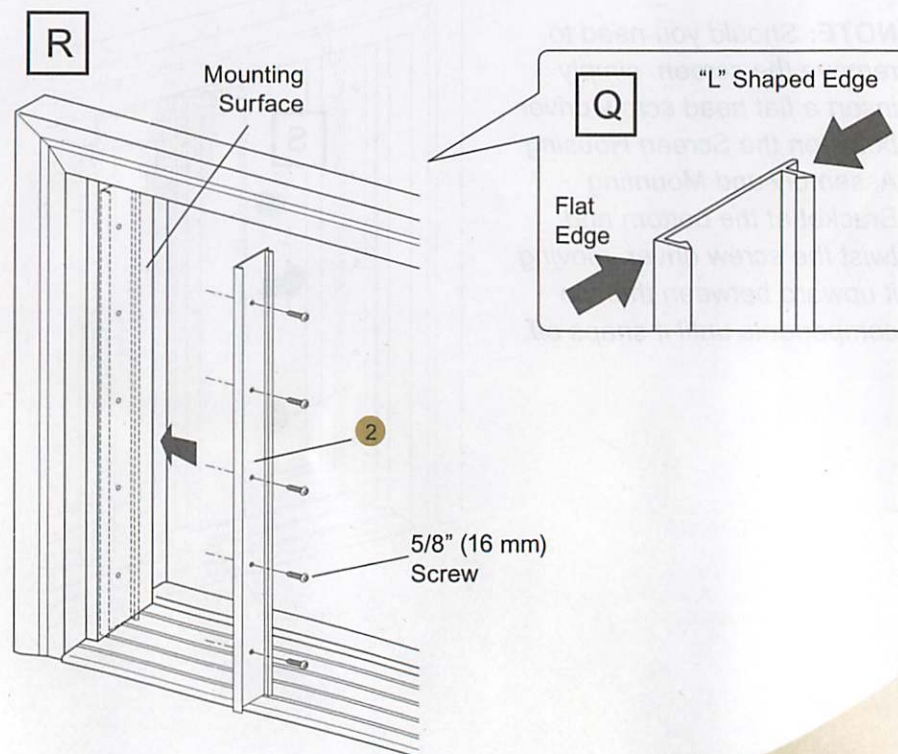


NOTE: After cutting any part of the screen, use a file to remove any burrs from the surfaces.

Installing the Mounting Bracket

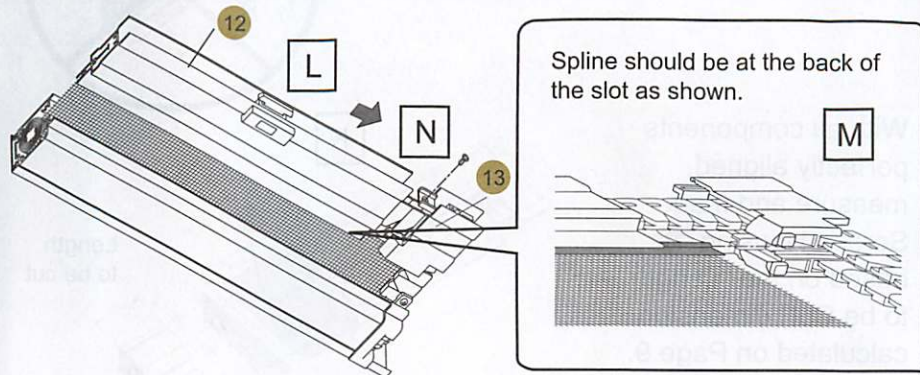
Securing the Mounting Bracket

1. Ensure Mounting Surface is flat.
2. Locate the "L" shaped edge, and the flat edge of Mounting Bracket ②. **[Q]**
3. Remove the backing from the adhesive strip on the back of the Mounting Bracket ② and position on the mounting surface with the flat edge along the edge of the door frame, and the "L" Shaped Edge toward the door (hinge side). **[R]**
4. Using a level, adjust the Mounting Bracket ② to ensure that it is positioned plumb.
5. Attach the Mounting Bracket to the door frame using the 5/8" (16 mm) Pan Head Screws provided.

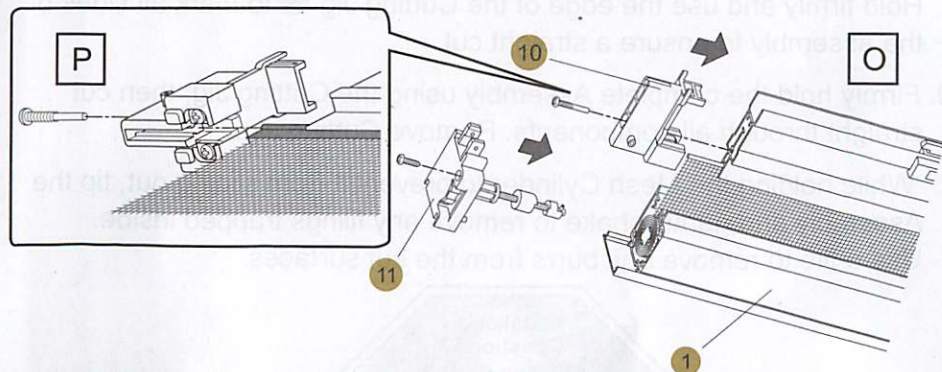


Cutting the Screen Housing Assembly

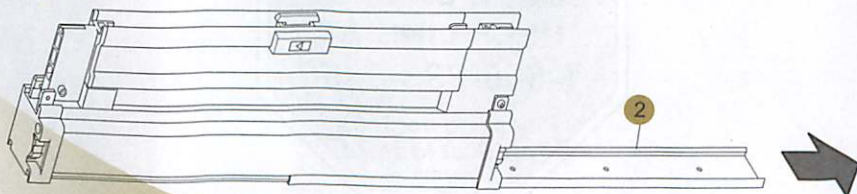
12. Re-attach the Sliding Bar **12** onto the Sliding Bar Bottom Cap **13**. **L**
Ensure the spline is correctly aligned in Sliding Bar Bottom Cap. **M**
Make sure that it is pushed in as far as it will go. Re-install the screw into the Sliding Bar Bottom Cap **13**. **N**



13. Re-attach the Mesh Lock Adjuster **11** and Sliding Bar Top Cap **10** to the Screen Housing Assembly **1** and replace the screws. **O**
Ensure the spline is correctly aligned in Sliding Bar Top Cap **10** as per bottom (See **P**).



14. Slide the Mounting Bracket **2** completely off the Screen Housing and set aside.



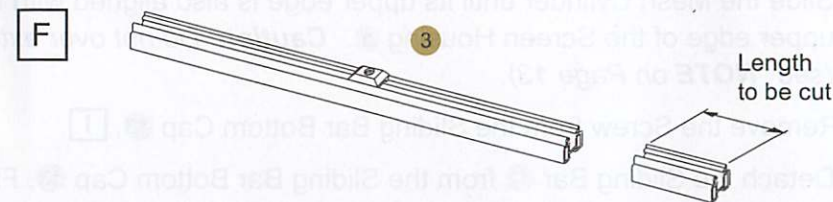
Cutting the Catch Frame

Cutting the Catch Frame

Either end can be cut.

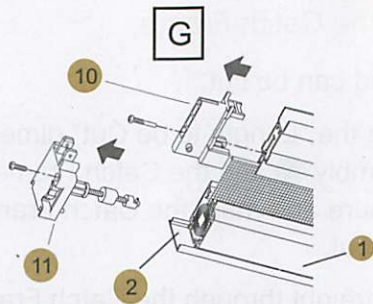
- Using the "Length to be Cut" dimension for the Screen Housing Assembly **1** and the Catch Frame **3** calculated on Page 9, carefully measure and mark the Catch Frame **3** on all sides to ensure an even cut.
- Cut straight through the Catch Frame **3**. **F**

NOTE: It is important to wear safety glasses at all times when cutting components of the screen. After cutting any part of the screen, use a file to remove any burrs from the cut surfaces.

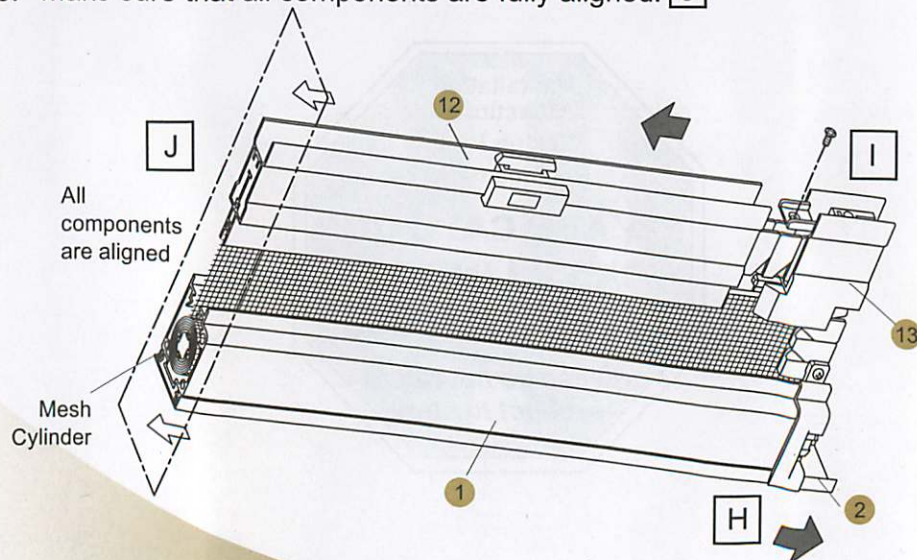


Cutting the Screen Housing Assembly

NOTE: All cutting will be done on the upper end of the Screen Housing Assembly. The attached Mounting Bracket 2 is clearly labeled with CUT and NO CUT zones.

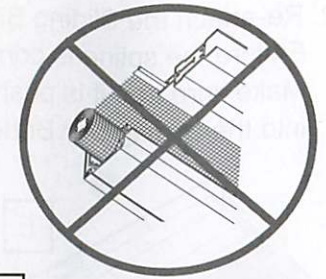


1. Remove the Mesh Lock Adjuster 11 and Sliding Bar Top Cap 10 from the Screen Housing Assembly 1 by removing their screws. [G]
2. Slide the Mounting Bracket 2 until its upper edge is aligned with the upper edge of the Screen Housing 1. [H]
3. Slide the Mesh Cylinder until its upper edge is also aligned with the upper edge of the Screen Housing 1. **Caution:** Do not over extend (see *NOTE on Page 13).
4. Remove the Screw from the Sliding Bar Bottom Cap 13. [I]
5. Detach the Sliding Bar 12 from the Sliding Bar Bottom Cap 13. Firmly hold the mesh to prevent it from moving with the Sliding Bar, then slide the Sliding Bar until it is also aligned.
6. Make sure that all components are fully aligned. [J]

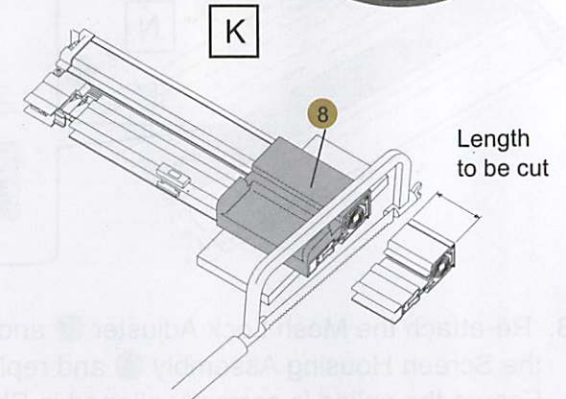


Cutting the Screen Housing Assembly

*** NOTE:** If the Mesh Cylinder is pulled out too far and resists being slid back in, simply rotate the Mesh Cylinder slightly (1/8" to 1/4" turn) while pushing in.



7. With all components perfectly aligned, measure and mark Screen Housing 1 based on the "Length to be Cut" dimension calculated on Page 9.



8. Place Cutting Jig 8 onto assembly so that the end is aligned with the measure mark. [K]
9. Hold firmly and use the edge of the Cutting Jig 8 to mark all sides of the assembly to ensure a straight cut.
10. Firmly hold the complete Assembly using the Cutting Jig, then cut straight through all components. Remove Cutting Jig.
11. While holding the Mesh Cylinder to prevent it from sliding out, tip the Assembly and gently shake to remove any filings trapped inside. Use a file to remove any burrs from the cut surfaces.

