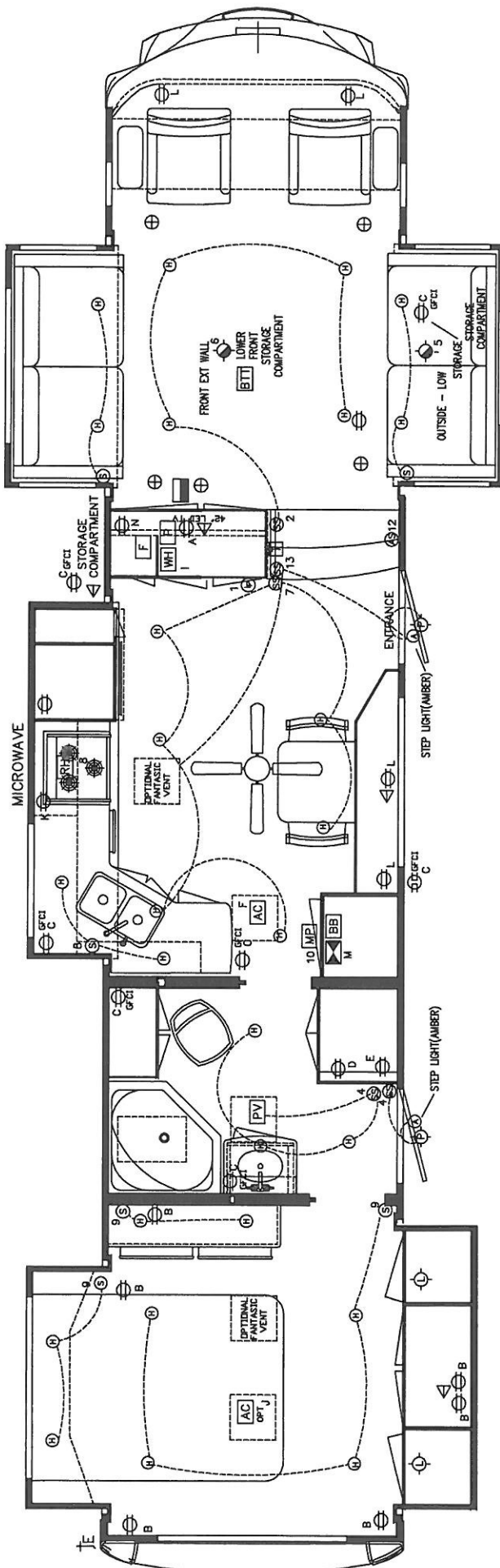


SYMBOLS

- ⊕ - 110 VOLT RECEPT
- ⊕ - 110 VOLT RECEPT w/GFI
- ⊕ - 12 VOLT SWITCH
- ⊕ - LP DETECTOR
- ⊕ - ELECTRIC INLET
- ⊕ - 4" HALOGEN
- ⊕ - KIT LIGHT BAR
- MP - MONITOR PANEL
- PV - POWER VENT
- IT - THERMOSTAT
- P - WATER PUMP
- RE - POWER RANGE HOOD
- ⊕ - 12 VOLT LIGHT (J-WALL)
- ⊕ - 12 VOLT DECOR LIGHT
- ⊕ - 12 VOLT PORCH LIGHT
- ⊕ - 12 VOLT LIGHT (SINGLE)
- ⊕ - 12 VOLT LIGHT (DOUBLE)
- ⊕ - SPEAKER
- ⊕ - TV JACK, CABLE, SAT
- ⊕ - RADIO
- ⊕ - BATTERY
- ⊕ - POWER AWNING SWITCH
- BB - 12/110 VOLT BREAKER BOX
- ⊕ - CONVERTOR
- F - FURNACE
- WH - WATER HEATER
- AC - AIR CONDITIONER
- ⊕ - 12 VOLT LIGHT w/SWITCH
- ⊕ - 12 VOLT SCARE LIGHT



CIRCUIT	15a	15a	15a	15a	15a	15a	15a	15a	15a	15a	15a	15a	15a	15a	15a	15a
50 A	A	B	C	D	E	F	G	H	I	J	K	L	M	N		
	TV/TENT CENTER	FRONT RECEPTS	WASHER	DRYER	MAIN A/C	MAIN	MAIN	WATER HEATER	2nd A/C	MICROWAVE	LIVING ROOM	CONVERTOR	OPT FIREPLACE			

- 1 - YELLOW (LP) 3AMP
- 2 - YELLOW (LIVING) 15AMP
- 3 - BLUE (KITCHEN) 15AMP
- 4 - PURPLE (OD SLIDE) 15AMP
- 5 - PINK (HALLWAY) 15AMP
- 6 - RED (BEDSIDE/REARVIEW) 15 AMP
- 7 - RED (FT CLOSET/HITCH) 15AMP
- 8 - ORANGE (APPLIANCE) 15AMP
- 9 - BLUE (BATHROOM) 15AMP
- 10 - BLUE (CLOSET) 15AMP
- 11 - YELLOW (CLOSETED MOTOR) 20AMP
- 12 - BLUE (POWER AWNING) 15 AMP
- 13 - BROWN (PITCH/SCARE) 15AMP

REDWOOD FW 38FL

Rev

Date:

8/05/13

Revisions

UP DATE LIGHTS TO LED 2014 LAYOUT

By

RFP

REDWOOD R.V.

72444 STATE RD 13
SYRACUSE, IN 46567

Title: FLOOR PLAN - ELECTRIC

Drawn By: RFP

Date: 07/11/13

Scale: DNS

Sheet No. 1 OF 1

DRAWING NUMBER 08-1420

1. INTERIOR FINISH SHALL BE OF MAT'L HAVING FLAME SPREAD RATING OF 200 OR LESS

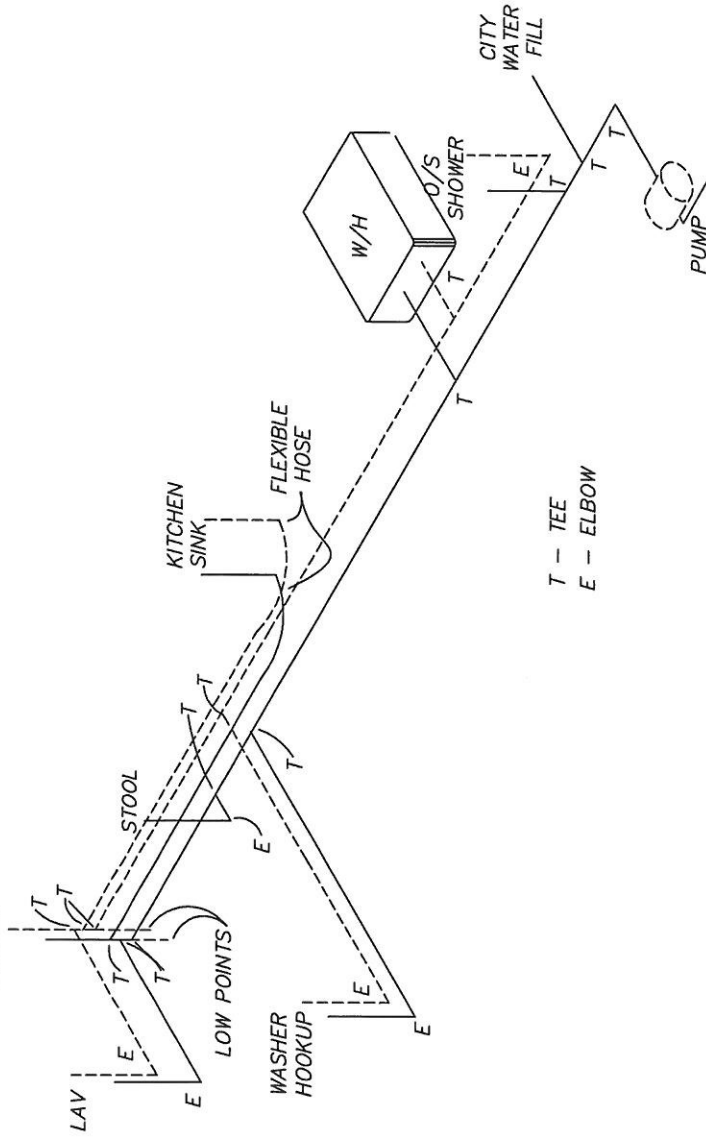
2. INTERIOR TEXTILES MAT'L ARE TO CONFORM TO FEDERAL MOTOR VEHICLE STANDARD NO. 302

3. 10 LB. B/C FIRE EXTINGUISHER MINIMUM

4. VERTICAL CLEARANCE REQUIRED FROM RANGE TOP TO RANGE VENT DOES NOT EXCEED THE MINIMUM 20 3/4".

5. MINIMUM LENGTH OF EXPOSED POWER CORD - 30 FT.

SHOWER



T - TEE
E - ELBOW

NOTE: ALL FIXTURE P-TRAPS ARE 1 1/4" WITH ADAPTER UNLESS OTHERWISE NOTED.
LENGTH OF TRAP ARMS MEET THE REQUIREMENTS OF TABLE 7.4.5.4 (NFPA 1192-2014) AND CLAUSE 7.3 (TABLE 2) (CSA Z240 RV SERIES-2014)

Cross Roads (REDWOOD RV)

REDWOOD RW - 38FL

POTABLE TUBING INFO:
FLEXPEX 1/2" (INSIDE DIAMETER) SDR9
PEX-9 B137.5 POTABLE
ASTM F876/F877/F2023
160psi 73.4°F/100psi 180°F/80psi 200°F
TUBING

----- HOT WATER LINE
----- COLD WATER LINE

Rev	Date:	Revisions	By
A	9/25/13	CORRECT STOOL LINE CONNECTION TO COLD FROM HOT	RFP

REDWOOD
R.V.
72440 State Rd 13
SYRACUSE, IN 46567

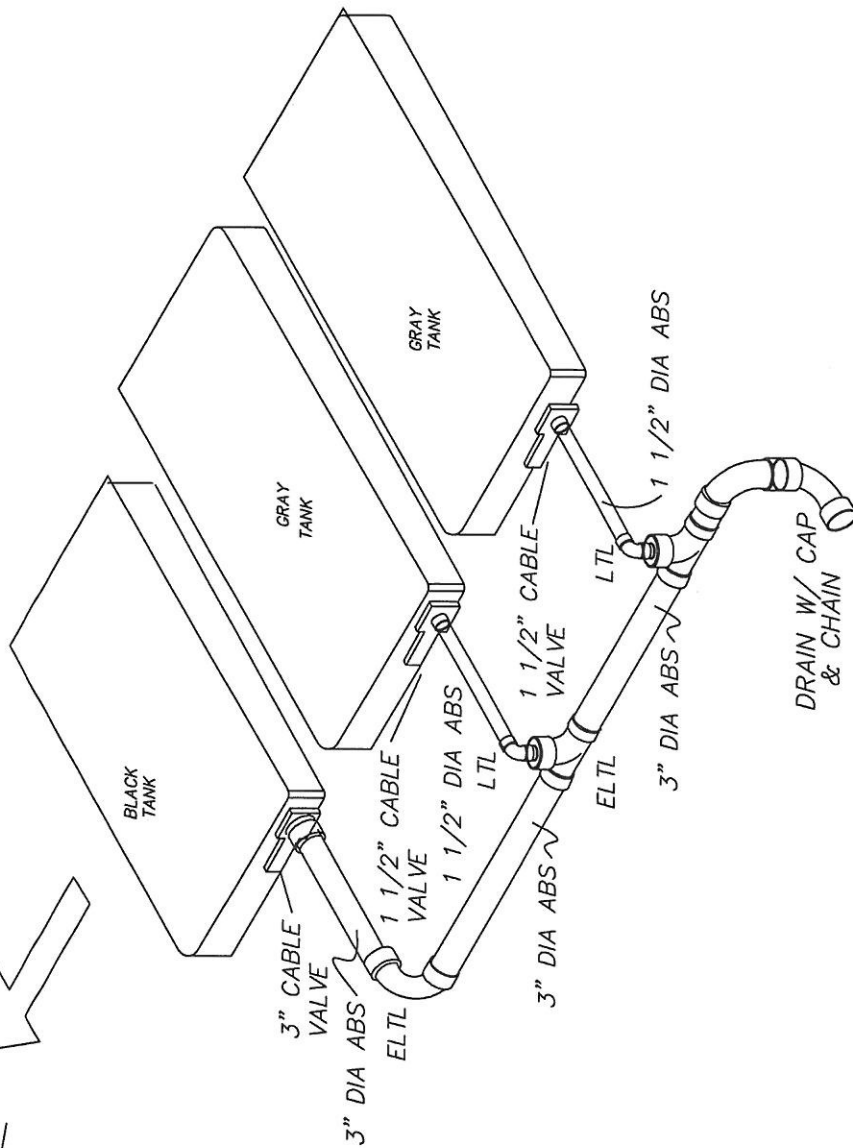
Title: WATER LINES

Drawn By: RFP Scale: DNS

Date: 08/27/13 Sheet No. 1 of 1

DRAWING NUMBER 04-4420

IN →



DEL DOUBLE EL
 STY SAB TEE
 LTL LONG TURN EL
 LTTY LONG TURN TEE WYE
 45 45 DEGREE EL
 CO CLEAN OUT

NOTE: ALL FIXTURE P-TRAPS ARE 1 1/4" WITH ADAPTER UNLESS OTHERWISE NOTED.
 LENGTH OF TRAP ARMS MEET THE REQUIREMENTS OF TABLE 7.4.5.4 (NFPA 1192-2014) AND CLAUSE 7.3 (TABLE 2) (CSA Z240 RV SERIES-2014)

REDWOOD FW - 38FL

Rev	Date:	Revisions	By
-	-	-	-

REDWOOD
 R.V.
 72440 State Rd 13
 SYRACUSE, IN 46567

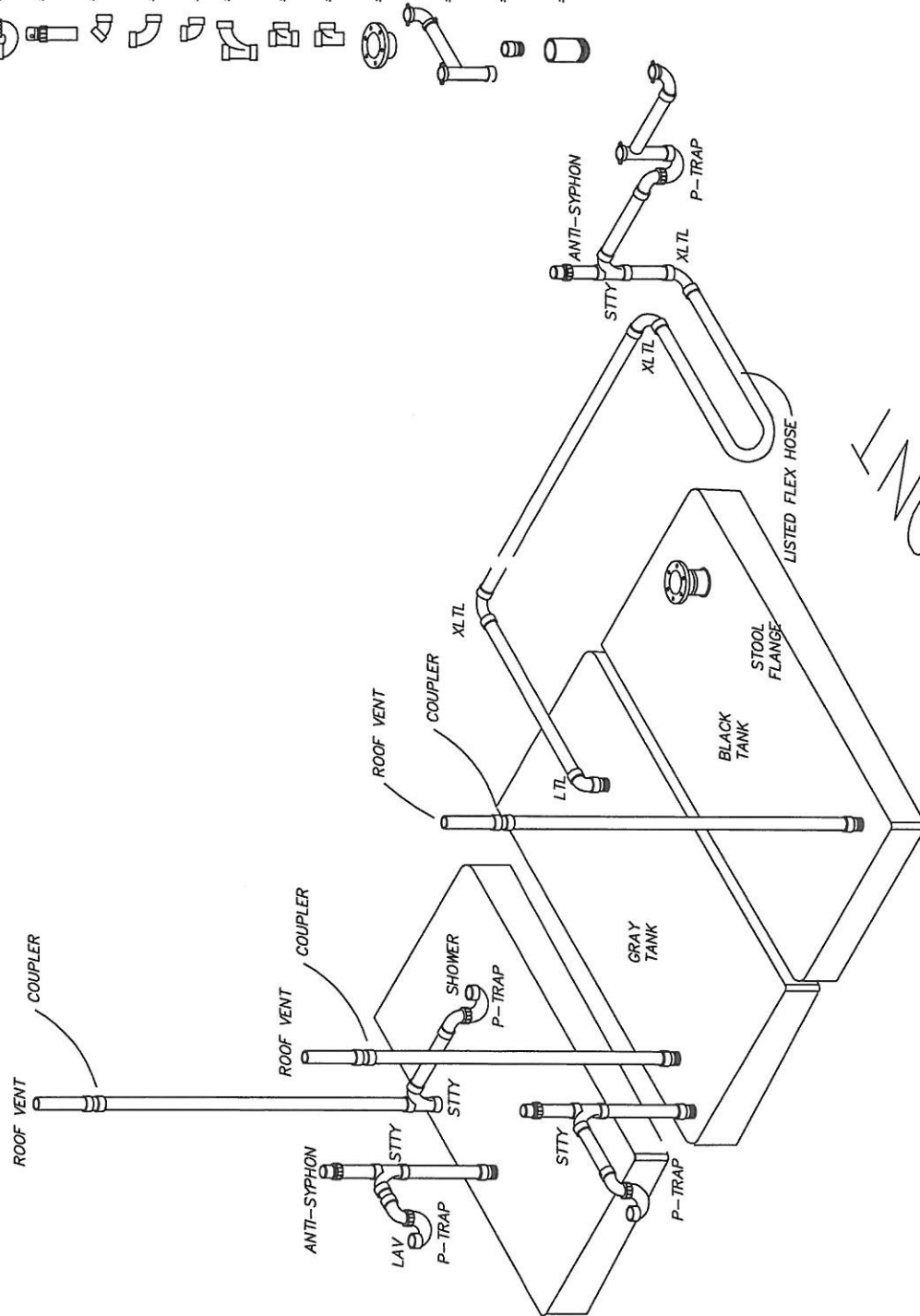
Title: DWV BELOW FLOOR

Drawn By: RFP Scale: DNS

Date: 08/27/13 Sheet No. 1 of 1

DRAWING NUMBER 04-5420

- = P-TRAP
- = ANTI-SIPHON VENT
- = 45°
- = XL TL (X-TRA LONG ELBOW)
- = LTL (LONG TURN ELBOW)
- = LTTY
- = STTY
- = STY
- = STOOL FLANGE
- = 1 1/4" CONT. WASTE
- = 1 1/2 MALE ADPT.
- = 3" NIPPLE



NOTE: ALL FIXTURE P-TRAPS ARE 1 1/2" WITH ADAPTER UNLESS OTHERWISE NOTED.
 LENGTH OF TRAP ARMS MEET THE REQUIREMENTS OF TABLE 7.4.5.4 (NFPA 1192-2014) AND CLAUSE 7.3 (TABLE 2) (CSA Z240 RV SERIES-2014)

REDWOOD-38FL

Rev	Date:	Revisions	By
-	-	-	-

REDWOOD R.V. 72440 State Rd 13 SYRACUSE, IN 46567			
Title: DWV ABOVE FLOOR			
Drawn By: DDF		Scale: DNS	
Date: 08/27/13		Sheet No. 1 of 1	
DRAWING NUMBER 04-2420			