

not showing correctly →

B

ITEM NO.	PART NUMBER	DESCRIPTION	QTY.
1	SL0006	F350-13 FLANGED BEARING	2
2	SL0027	DRIVE GEAR	1
3	SL0033	SPACER	2
4	SL0036	BRONZE BEARING	2
5	SL0039	3/8" SPACER	2
6	SL0051	5/8 DRIVE GEAR SHAFT	1
7	SL0053	5/8 ROLLER SHAFT	1
8	SL0054	LARGE DRIVE GEAR	1
9	SL0071	ROLLER 1 3/4"	8
10	SL0072	.500 TRANSMISSION SHAFT	1
11	SL0074	GEAR RACK-38"	1
12	SLAN0291	FLOOR MOUNTING BRACKET	1
13	SLAN0292	Wall Mounting Bracket	1
14	SLAN0301	GUIDE BRACKET	2
15	SLCH0285	CHANNEL-45.500	1
16	SLCH0289	FLOOR MOUNTING CHANNEL	2
17	SLPL0287	SIDE PLATE	2

MTSL0017 - 410" Rear Bank

		M-TEC Corporation 701 Collins Rd. Elkhart, IN 46515 Ph: (219)254-1000 FAX: (219)254-1002
M-TEC CORPORATION 701 COLLINS RD. ELKHART, IN 46515 TEL: (219) 254-1000 FAX: (219) 254-1002	PROPERTY OF M-TEC CORPORATION THIS DRAWING IS THE PROPERTY OF M-TEC CORPORATION NO PART OF THIS DRAWING IS TO BE REPRODUCED OR TRANSMITTED IN ANY FORM OR BY ANY MEANS, ELECTRONIC OR MECHANICAL, INCLUDING PHOTOCOPYING, RECORDING, OR BY ANY INFORMATION STORAGE AND RETRIEVAL SYSTEM, WITHOUT THE WRITTEN PERMISSION OF M-TEC CORPORATION.	DATE: 12/09/04 DRAWN BY: BWM CHECKED BY: BWM DESIGNED BY: BWM APPROVED BY: BWM PART NAME: 45.5" ARM ASSEMBLY

REV	FCN#	DESCRIPTION	DATE	BY
B	0000022	SEE ECN 0000022	2/1/2005	JWB
A	-	REVISE SLSB0083	12/17/2004	BWM

45.5" ARM ASSEMBLY

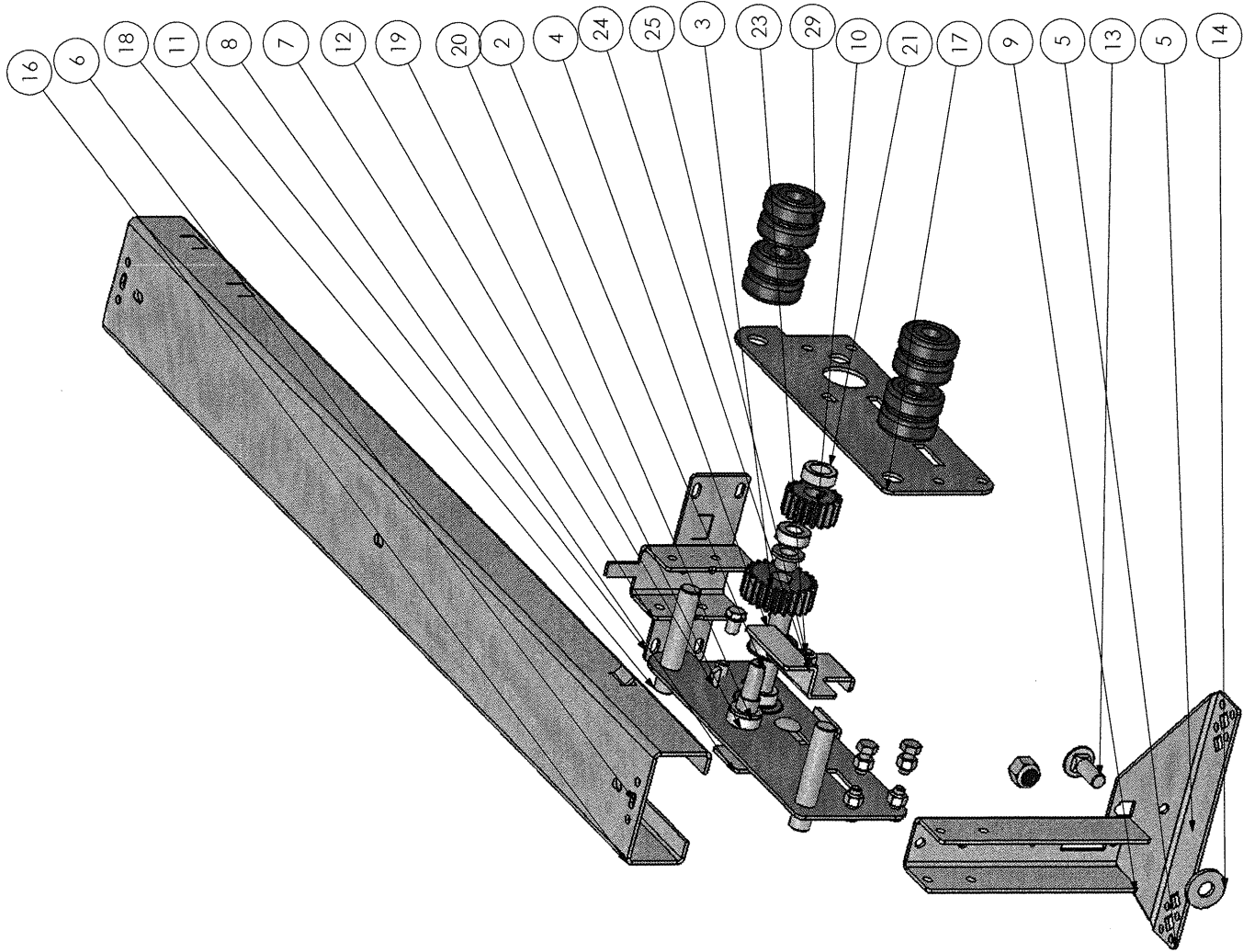
PAGE 1 OF 2

SLSB0088

MTSLO017 46" SINGLE ARM



ITEM NO.	PART NUMBER	DESCRIPTION	QTY.
1	PURCHASED	.5-13 NYL INS HEX LOCK NUT ZP	0.5
2	SL0072	.500 TRANSMISSION SHAFT	1
3	SL0054	LARGE DRIVE GEAR	1
4	SL0051	5/8 DRIVE GEAR SHAFT	1
5	SLAN0291	FLOOR MOUNTING BRACKET	1
6	SL0076	GEAR RACK 32"	1
7	SLCH0297	WALL MOUNTING CHANNEL	1
8	SLAN0301	GUIDE BRACKET	1
9	SLCH0290	FLOOR MOUNT CHANNEL	1
10	SL0027	DRIVE GEAR	1
11	SLPL0298	WALL MOUNT BRACKET	1
12	PURCHASED	605 WOODRUFF KEY	1
13	PURCHASED	1/2-13 x 1-1/4 CARR BOLT ZP	1
14	PURCHASED	1/2 HARDENED SERRATED WASHER	1
15	SLAN0741	GUIDE BRACKET	1
16	SLCH0286	34" SLIDE CHANNEL	1
17	SLPL0287	SIDE PLATE	2
18	SL0053	5/8 ROLLER SHAFT	2
19	SL0033	SPACER	2
20	SL0036	BRONZE BEARING	2
21	SL0039	3/8" SPACER	2
22	SL0006	F350-13 FLANGED BEARING	2
23	PURCHASED	3/8-16 x 3/4 CARR BOLT ZP	2
24	PURCHASED	3/8 FLAT WASHER ZP	2
25	PURCHASED	3/8-16 NYLOCK NUT ZP	2
26	PURCHASED	5/16-18 x 3/4 HEX BOLT ZP	4
27	PURCHASED	3/8-16 x 1/2 TRI-LOB BOLT ZP	4
28	PURCHASED	5/16"-18 HEX LOCK NUT NYL INS ZP	4
29	SL0071	ROLLER 1 3/4"	8



MTSL0018  
MTSL0019



M-TEC Corporation  
10000 10th St.  
Ft. Collins, CO 80525  
Ph: (970)294-1060  
Fax: (970)294-1062

UNLESS OTHERWISE SPECIFIED, ALL DIMENSIONS ARE IN INCHES. DIMENSIONS IN PARENTHESES ARE NON-CUMULATIVE. TOLERANCES: LINEAR: .005 ANGULAR: .1°

PROPERTY AND INFORMATION CONTAINED HEREIN IS THE PROPERTY OF M-TEC CORPORATION. IT IS TO BE USED FOR MANUFACTURE OF THE PRODUCT SPECIFICALLY IDENTIFIED HEREIN. NO OTHER USE OR REPRODUCTION WITHOUT THE WRITTEN CONSENT OF M-TEC CORPORATION.

DIVISION:

CUSTOMER:

DATE:

DRAWN BY:

INTERNAL

12/13/04

BWM

DWG LOCATION: F:\Engineering Files\Sub-Assembly\SLSB\

SHEET:

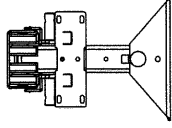
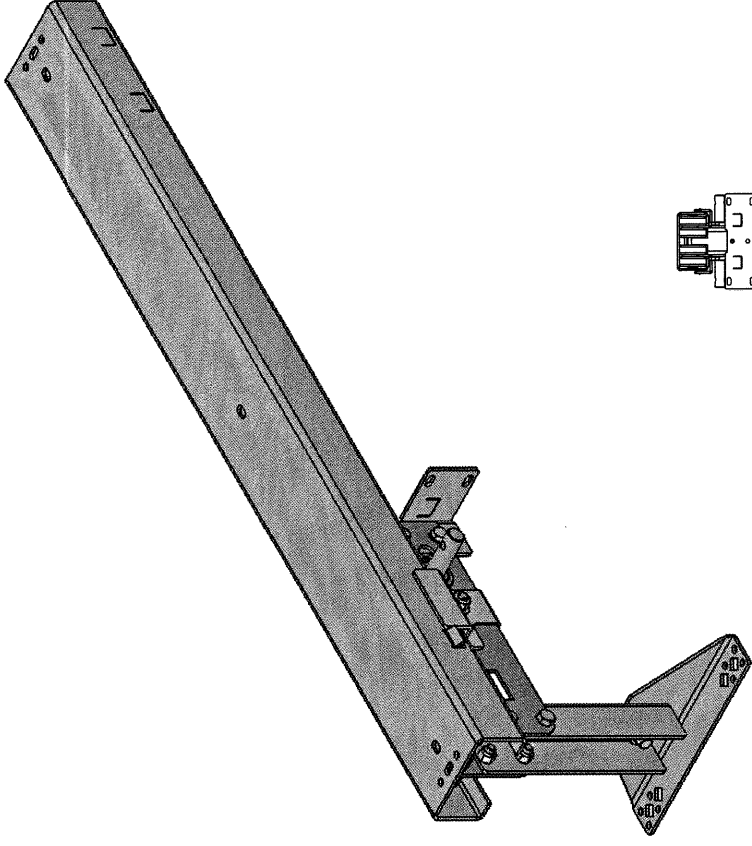
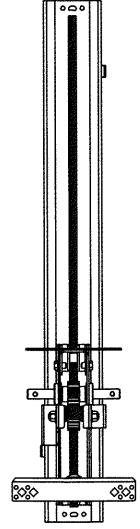
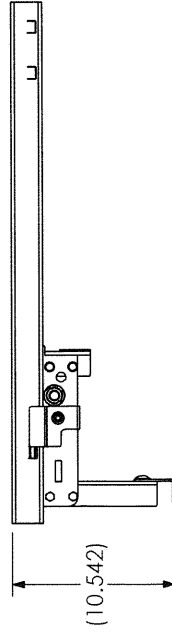
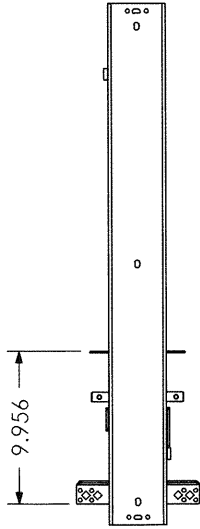
PAGE 1 OF 2

DWG NUMBER:

SLSB0089

B	0000022	SEE ECN #0000022	2/1/2005	JWB
A	-	REVISED SLR0084	12/17/2004	BWM
REV.	ECN#	DESCRIPTION	DATE	BY

DUAL ARM 34 IN UNIVERSAL SLIDE



DIVISION:	-
CUSTOMER:	INTERNAL
DATE:	12/13/04
DRAWN BY:	BWM
DWG LOCATION:	F:\Engineering Files\Sub-Assembly\SL8\
SHEET:	PAGE 2 OF 2
DWG NUMBER:	SLSB0089

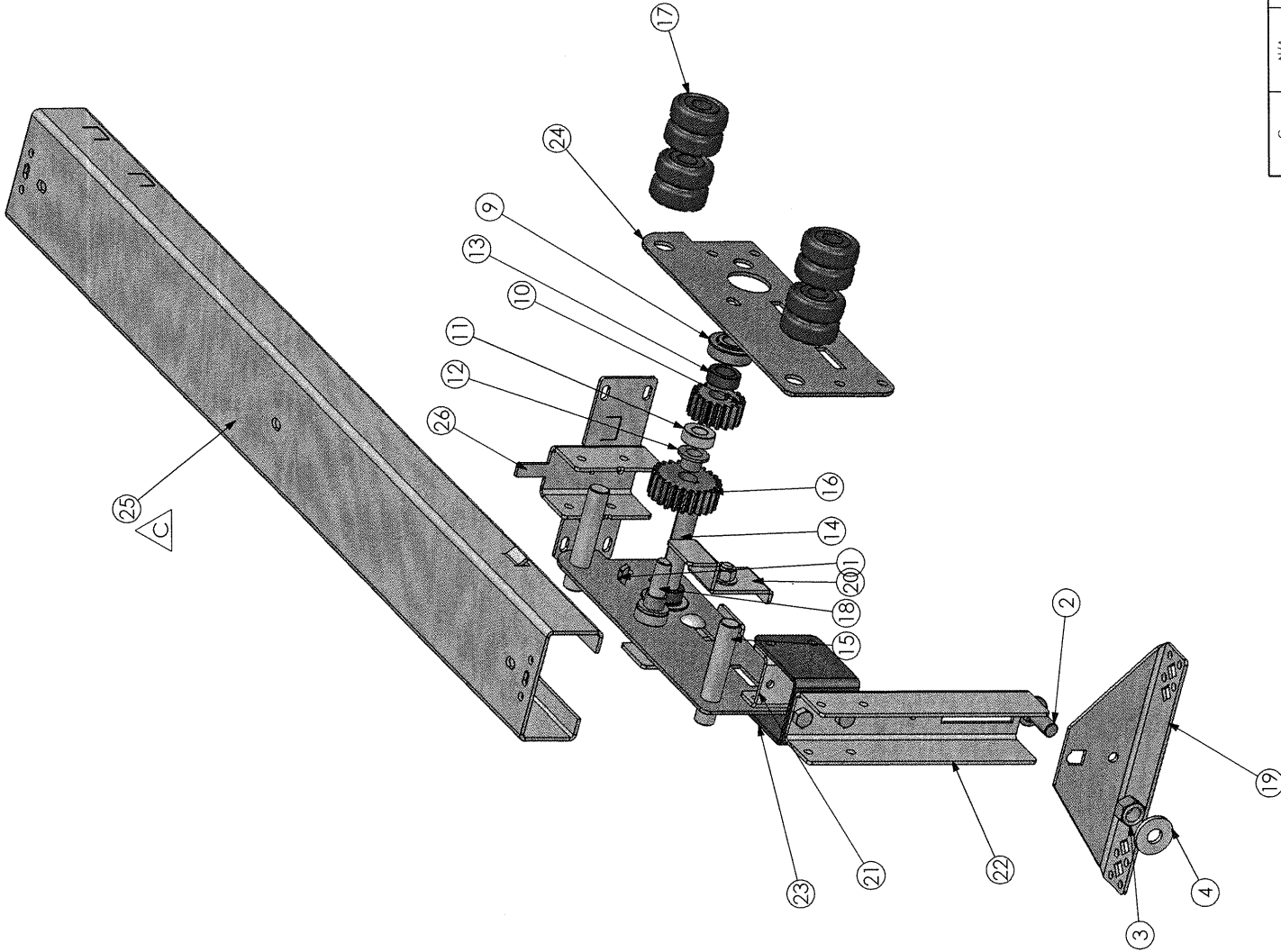



UNLESS OTHERWISE SPECIFIED, ALL DIMENSIONS ARE IN INCHES. DIMENSIONS ARE NON-CUMULATIVE. TOLERANCES: DECIMAL: ±0.003 FRACTIONAL: ±1/16 ANGULAR: ±1°

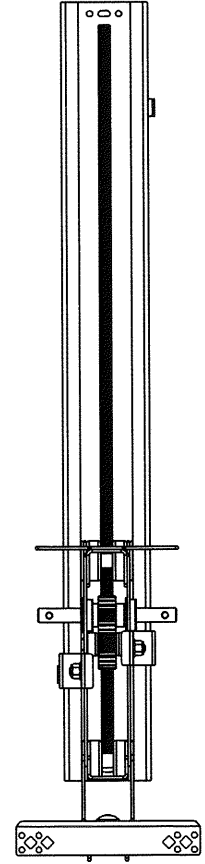
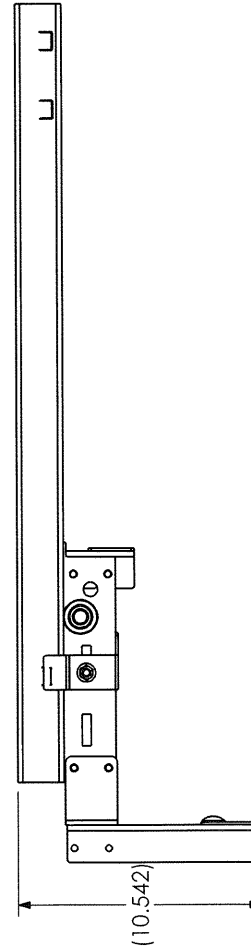
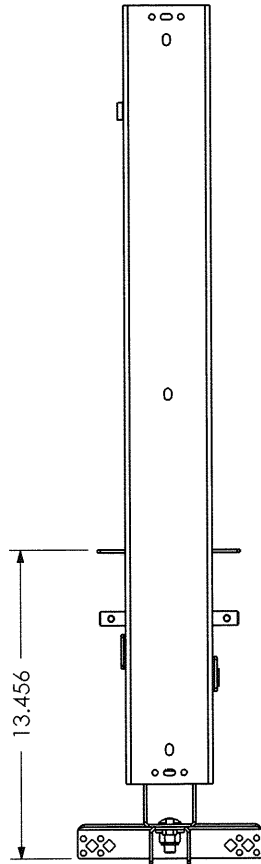
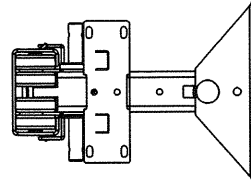
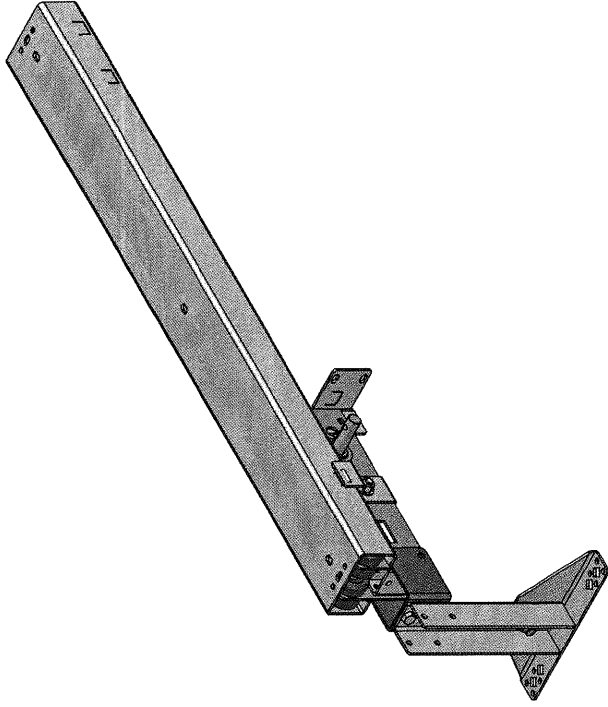
PROPERTY AND CONFIDENTIAL: THE INFORMATION CONTAINED HEREIN IS THE PROPERTY OF M-TEC CORPORATION. IT IS TO BE USED ONLY FOR THE PURPOSES SPECIFIED AND IS NOT TO BE REPRODUCED OR TRANSMITTED IN ANY FORM OR BY ANY MEANS, ELECTRONIC OR MECHANICAL, WITHOUT PERMISSION IN WRITING FROM M-TEC CORPORATION.


DESCRIPTION: DUAL ARM 34 IN UNIVERSAL SLIDE

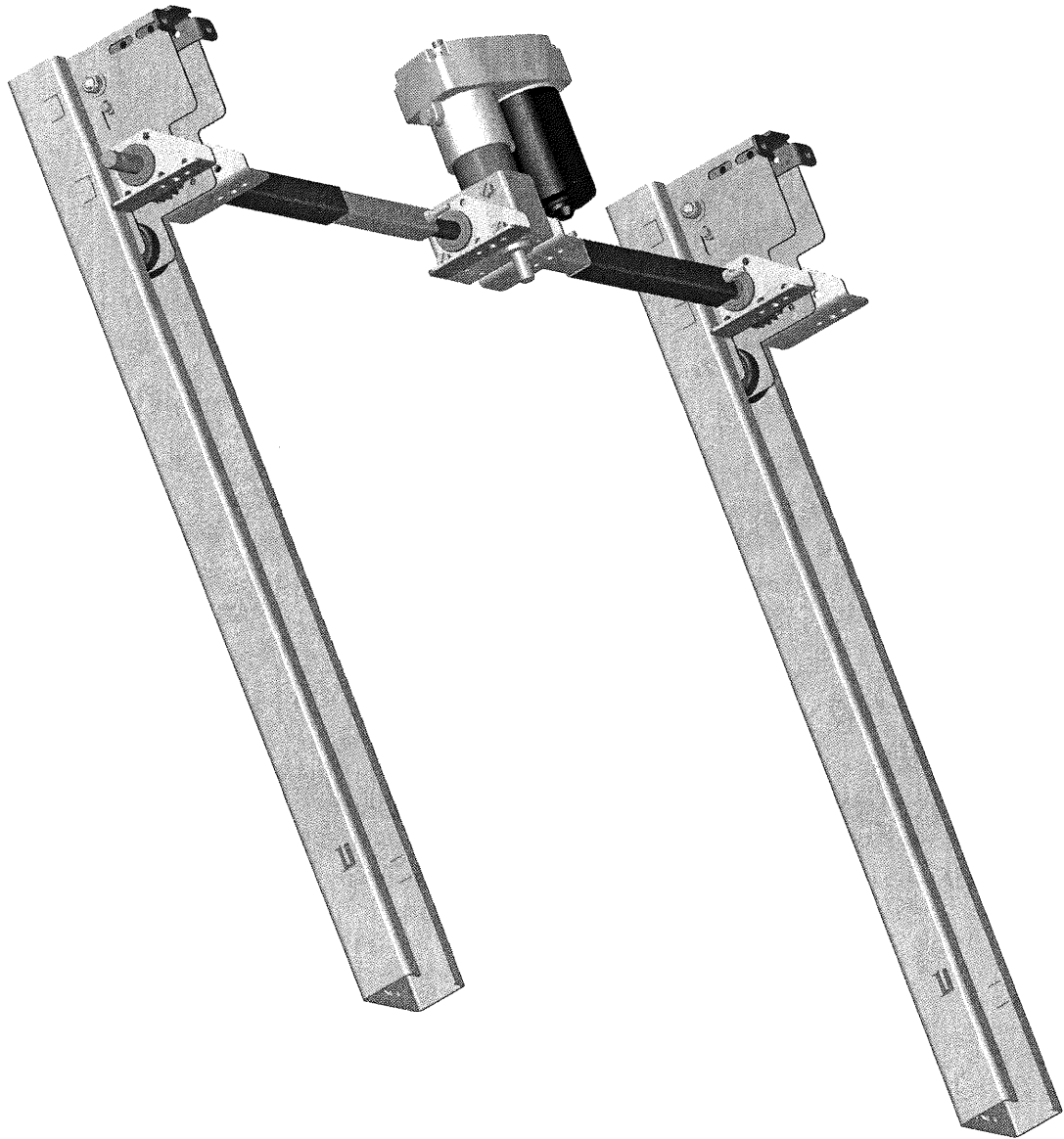
ITEM NO.	PART NUMBER	DESCRIPTION	QTY.
1	PURCHASED	605 WOODRUFF KEY	1
2	PURCHASED	1/2-13 x 1-1/4 CARR BOLT ZP	1
3	PURCHASED	1/2-13 NYLOCK NUT ZP	1
4	PURCHASED	1/2 HARDENED SERRATED WASHER	1
5	PURCHASED	3/8-16 x 3/4 CARR BOLT ZP	2
6	PURCHASED	3/8 FLAT WASHER ZP	2
7	PURCHASED	3/8-16 NYLOCK NUT ZP	2
8	PURCHASED	5/16-18 x 1/2 HEX BOLT ZP	2
9	PURCHASED	F350-13 FLANGED BEARING	2
10	SL0006	DRIVE GEAR	1
11	SL0033	SPACER	2
12	SL0036	BRONZE BEARING	2
13	SL0039	3/8" SPACER	2
14	SL0051	5/8 DRIVE GEAR SHAFT	1
15	SL0053	5/8 ROLLER SHAFT	2
16	SL0054	LARGE DRIVE GEAR	1
17	SL0071	ROLLER 1 3/4"	8
18	SL0072	.500 TRANSMISSION SHAFT	1
19	SLAN0291	FLOOR MOUNTING BRACKET	1
20	SLAN0301	GUIDE BRACKET	2
21	SLCH0339	REAR LEG EXT.	1
22	SLCH0341	FLOOR MOUNT CHANNEL	1
23	SLCH0600	EXTENTION BRKT GS	1
24	SLPL0287	SIDE PLATE	2
25	SLSB0084	34" SLIDE CHAN. SUB-ASSY.	1
26	SLSB0085	STD. MOUNT ASSY	1



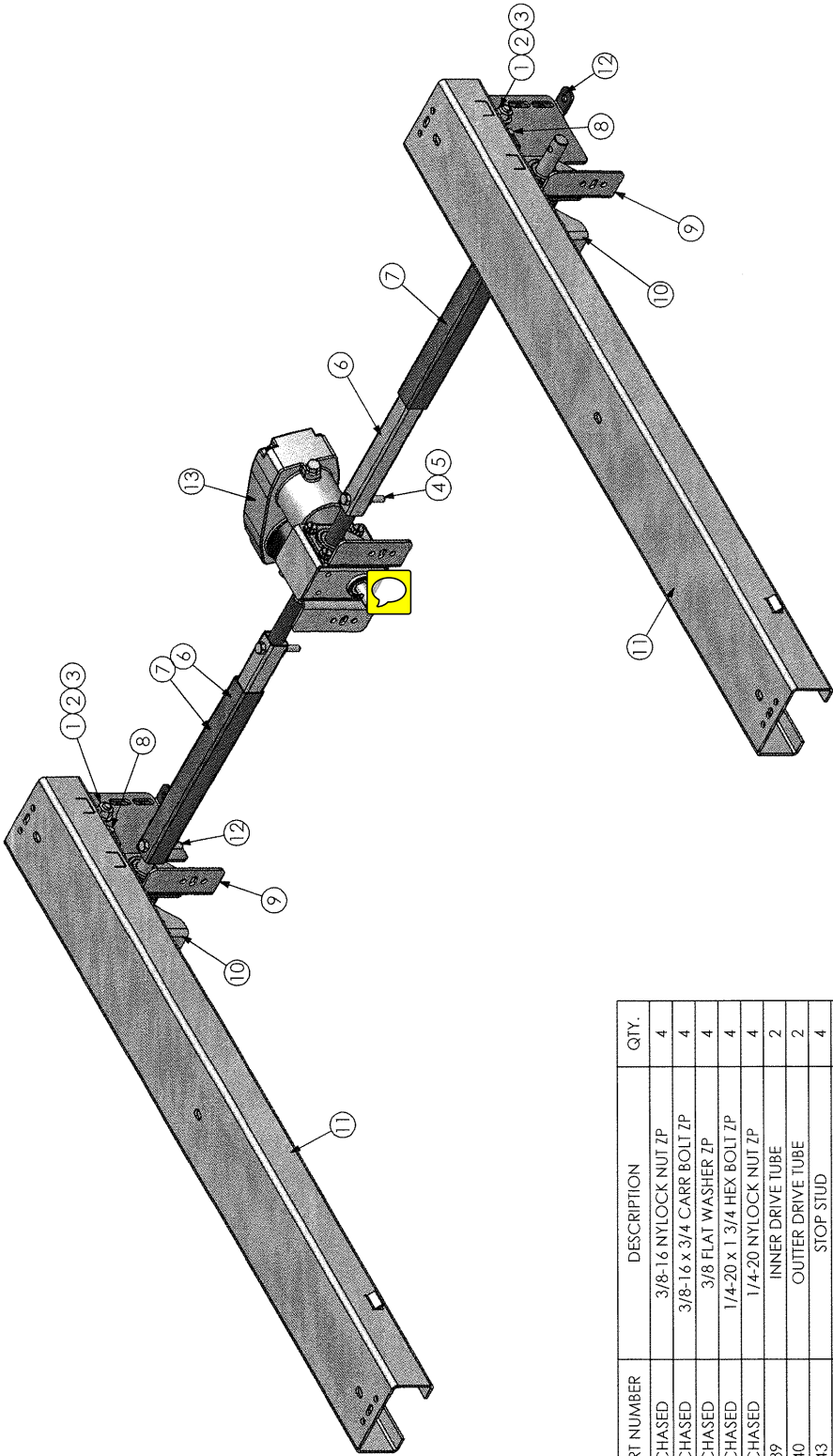
MATL:	-	GAGE:	-
SCOTT:	-	ACTUAL WEIGHT:	-
 M-TEC Corporation 2210 Middlebury Street Elkhart, IN 46515 TEL: (574)294-1088 FAX: (574)294-1082		DIVISION:	SLIDE
		CUSTOMER:	-
		DATE:	02/26/07
		DRAWN BY:	JWB
UNLESS OTHERWISE SPECIFIED: ALL DIMENSIONS ARE IN INCHES. FRACTIONS: 1/16, 1/8, 3/16, 1/4, 3/8, 1/2, 5/8, 3/4, 7/8, 1, 1 1/4, 1 1/2, 1 3/4, 2, 2 1/4, 2 1/2, 2 3/4, 3, 3 1/4, 3 1/2, 3 3/4, 4, 4 1/4, 4 1/2, 4 3/4, 5, 5 1/4, 5 1/2, 5 3/4, 6, 6 1/4, 6 1/2, 6 3/4, 7, 7 1/4, 7 1/2, 7 3/4, 8, 8 1/4, 8 1/2, 8 3/4, 9, 9 1/4, 9 1/2, 9 3/4, 10, 10 1/4, 10 1/2, 10 3/4, 11, 11 1/4, 11 1/2, 11 3/4, 12, 12 1/4, 12 1/2, 12 3/4, 13, 13 1/4, 13 1/2, 13 3/4, 14, 14 1/4, 14 1/2, 14 3/4, 15, 15 1/4, 15 1/2, 15 3/4, 16, 16 1/4, 16 1/2, 16 3/4, 17, 17 1/4, 17 1/2, 17 3/4, 18, 18 1/4, 18 1/2, 18 3/4, 19, 19 1/4, 19 1/2, 19 3/4, 20, 20 1/4, 20 1/2, 20 3/4, 21, 21 1/4, 21 1/2, 21 3/4, 22, 22 1/4, 22 1/2, 22 3/4, 23, 23 1/4, 23 1/2, 23 3/4, 24, 24 1/4, 24 1/2, 24 3/4, 25, 25 1/4, 25 1/2, 25 3/4, 26, 26 1/4, 26 1/2, 26 3/4, 27, 27 1/4, 27 1/2, 27 3/4, 28, 28 1/4, 28 1/2, 28 3/4, 29, 29 1/4, 29 1/2, 29 3/4, 30, 30 1/4, 30 1/2, 30 3/4, 31, 31 1/4, 31 1/2, 31 3/4, 32, 32 1/4, 32 1/2, 32 3/4, 33, 33 1/4, 33 1/2, 33 3/4, 34, 34 1/4, 34 1/2, 34 3/4, 35, 35 1/4, 35 1/2, 35 3/4, 36, 36 1/4, 36 1/2, 36 3/4, 37, 37 1/4, 37 1/2, 37 3/4, 38, 38 1/4, 38 1/2, 38 3/4, 39, 39 1/4, 39 1/2, 39 3/4, 40, 40 1/4, 40 1/2, 40 3/4, 41, 41 1/4, 41 1/2, 41 3/4, 42, 42 1/4, 42 1/2, 42 3/4, 43, 43 1/4, 43 1/2, 43 3/4, 44, 44 1/4, 44 1/2, 44 3/4, 45, 45 1/4, 45 1/2, 45 3/4, 46, 46 1/4, 46 1/2, 46 3/4, 47, 47 1/4, 47 1/2, 47 3/4, 48, 48 1/4, 48 1/2, 48 3/4, 49, 49 1/4, 49 1/2, 49 3/4, 50, 50 1/4, 50 1/2, 50 3/4, 51, 51 1/4, 51 1/2, 51 3/4, 52, 52 1/4, 52 1/2, 52 3/4, 53, 53 1/4, 53 1/2, 53 3/4, 54, 54 1/4, 54 1/2, 54 3/4, 55, 55 1/4, 55 1/2, 55 3/4, 56, 56 1/4, 56 1/2, 56 3/4, 57, 57 1/4, 57 1/2, 57 3/4, 58, 58 1/4, 58 1/2, 58 3/4, 59, 59 1/4, 59 1/2, 59 3/4, 60, 60 1/4, 60 1/2, 60 3/4, 61, 61 1/4, 61 1/2, 61 3/4, 62, 62 1/4, 62 1/2, 62 3/4, 63, 63 1/4, 63 1/2, 63 3/4, 64, 64 1/4, 64 1/2, 64 3/4, 65, 65 1/4, 65 1/2, 65 3/4, 66, 66 1/4, 66 1/2, 66 3/4, 67, 67 1/4, 67 1/2, 67 3/4, 68, 68 1/4, 68 1/2, 68 3/4, 69, 69 1/4, 69 1/2, 69 3/4, 70, 70 1/4, 70 1/2, 70 3/4, 71, 71 1/4, 71 1/2, 71 3/4, 72, 72 1/4, 72 1/2, 72 3/4, 73, 73 1/4, 73 1/2, 73 3/4, 74, 74 1/4, 74 1/2, 74 3/4, 75, 75 1/4, 75 1/2, 75 3/4, 76, 76 1/4, 76 1/2, 76 3/4, 77, 77 1/4, 77 1/2, 77 3/4, 78, 78 1/4, 78 1/2, 78 3/4, 79, 79 1/4, 79 1/2, 79 3/4, 80, 80 1/4, 80 1/2, 80 3/4, 81, 81 1/4, 81 1/2, 81 3/4, 82, 82 1/4, 82 1/2, 82 3/4, 83, 83 1/4, 83 1/2, 83 3/4, 84, 84 1/4, 84 1/2, 84 3/4, 85, 85 1/4, 85 1/2, 85 3/4, 86, 86 1/4, 86 1/2, 86 3/4, 87, 87 1/4, 87 1/2, 87 3/4, 88, 88 1/4, 88 1/2, 88 3/4, 89, 89 1/4, 89 1/2, 89 3/4, 90, 90 1/4, 90 1/2, 90 3/4, 91, 91 1/4, 91 1/2, 91 3/4, 92, 92 1/4, 92 1/2, 92 3/4, 93, 93 1/4, 93 1/2, 93 3/4, 94, 94 1/4, 94 1/2, 94 3/4, 95, 95 1/4, 95 1/2, 95 3/4, 96, 96 1/4, 96 1/2, 96 3/4, 97, 97 1/4, 97 1/2, 97 3/4, 98, 98 1/4, 98 1/2, 98 3/4, 99, 99 1/4, 99 1/2, 99 3/4, 100, 100 1/4, 100 1/2, 100 3/4, 101, 101 1/4, 101 1/2, 101 3/4, 102, 102 1/4, 102 1/2, 102 3/4, 103, 103 1/4, 103 1/2, 103 3/4, 104, 104 1/4, 104 1/2, 104 3/4, 105, 105 1/4, 105 1/2, 105 3/4, 106, 106 1/4, 106 1/2, 106 3/4, 107, 107 1/4, 107 1/2, 107 3/4, 108, 108 1/4, 108 1/2, 108 3/4, 109, 109 1/4, 109 1/2, 109 3/4, 110, 110 1/4, 110 1/2, 110 3/4, 111, 111 1/4, 111 1/2, 111 3/4, 112, 112 1/4, 112 1/2, 112 3/4, 113, 113 1/4, 113 1/2, 113 3/4, 114, 114 1/4, 114 1/2, 114 3/4, 115, 115 1/4, 115 1/2, 115 3/4, 116, 116 1/4, 116 1/2, 116 3/4, 117, 117 1/4, 117 1/2, 117 3/4, 118, 118 1/4, 118 1/2, 118 3/4, 119, 119 1/4, 119 1/2, 119 3/4, 120, 120 1/4, 120 1/2, 120 3/4, 121, 121 1/4, 121 1/2, 121 3/4, 122, 122 1/4, 122 1/2, 122 3/4, 123, 123 1/4, 123 1/2, 123 3/4, 124, 124 1/4, 124 1/2, 124 3/4, 125, 125 1/4, 125 1/2, 125 3/4, 126, 126 1/4, 126 1/2, 126 3/4, 127, 127 1/4, 127 1/2, 127 3/4, 128, 128 1/4, 128 1/2, 128 3/4, 129, 129 1/4, 129 1/2, 129 3/4, 130, 130 1/4, 130 1/2, 130 3/4, 131, 131 1/4, 131 1/2, 131 3/4, 132, 132 1/4, 132 1/2, 132 3/4, 133, 133 1/4, 133 1/2, 133 3/4, 134, 134 1/4, 134 1/2, 134 3/4, 135, 135 1/4, 135 1/2, 135 3/4, 136, 136 1/4, 136 1/2, 136 3/4, 137, 137 1/4, 137 1/2, 137 3/4, 138, 138 1/4, 138 1/2, 138 3/4, 139, 139 1/4, 139 1/2, 139 3/4, 140, 140 1/4, 140 1/2, 140 3/4, 141, 141 1/4, 141 1/2, 141 3/4, 142, 142 1/4, 142 1/2, 142 3/4, 143, 143 1/4, 143 1/2, 143 3/4, 144, 144 1/4, 144 1/2, 144 3/4, 145, 145 1/4, 145 1/2, 145 3/4, 146, 146 1/4, 146 1/2, 146 3/4, 147, 147 1/4, 147 1/2, 147 3/4, 148, 148 1/4, 148 1/2, 148 3/4, 149, 149 1/4, 149 1/2, 149 3/4, 150, 150 1/4, 150 1/2, 150 3/4, 151, 151 1/4, 151 1/2, 151 3/4, 152, 152 1/4, 152 1/2, 152 3/4, 153, 153 1/4, 153 1/2, 153 3/4, 154, 154 1/4, 154 1/2, 154 3/4, 155, 155 1/4, 155 1/2, 155 3/4, 156, 156 1/4, 156 1/2, 156 3/4, 157, 157 1/4, 157 1/2, 157 3/4, 158, 158 1/4, 158 1/2, 158 3/4, 159, 159 1/4, 159 1/2, 159 3/4, 160, 160 1/4, 160 1/2, 160 3/4, 161, 161 1/4, 161 1/2, 161 3/4, 162, 162 1/4, 162 1/2, 162 3/4, 163, 163 1/4, 163 1/2, 163 3/4, 164, 164 1/4, 164 1/2, 164 3/4, 165, 165 1/4, 165 1/2, 165 3/4, 166, 166 1/4, 166 1/2, 166 3/4, 167, 167 1/4, 167 1/2, 167 3/4, 168, 168 1/4, 168 1/2, 168 3/4, 169, 169 1/4, 169 1/2, 169 3/4, 170, 170 1/4, 170 1/2, 170 3/4, 171, 171 1/4, 171 1/2, 171 3/4, 172, 172 1/4, 172 1/2, 172 3/4, 173, 173 1/4, 173 1/2, 173 3/4, 174, 174 1/4, 174 1/2, 174 3/4, 175, 175 1/4, 175 1/2, 175 3/4, 176, 176 1/4, 176 1/2, 176 3/4, 177, 177 1/4, 177 1/2, 177 3/4, 178, 178 1/4, 178 1/2, 178 3/4, 179, 179 1/4, 179 1/2, 179 3/4, 180, 180 1/4, 180 1/2, 180 3/4, 181, 181 1/4, 181 1/2, 181 3/4, 182, 182 1/4, 182 1/2, 182 3/4, 183, 183 1/4, 183 1/2, 183 3/4, 184, 184 1/4, 184 1/2, 184 3/4, 185, 185 1/4, 185 1/2, 185 3/4, 186, 186 1/4, 186 1/2, 186 3/4, 187, 187 1/4, 187 1/2, 187 3/4, 188, 188 1/4, 188 1/2, 188 3/4, 189, 189 1/4, 189 1/2, 189 3/4, 190, 190 1/4, 190 1/2, 190 3/4, 191, 191 1/4, 191 1/2, 191 3/4, 192, 192 1/4, 192 1/2, 192 3/4, 193, 193 1/4, 193 1/2, 193 3/4, 194, 194 1/4, 194 1/2, 194 3/4, 195, 195 1/4, 195 1/2, 195 3/4, 196, 196 1/4, 196 1/2, 196 3/4, 197, 197 1/4, 197 1/2, 197 3/4, 198, 198 1/4, 198 1/2, 198 3/4, 199, 199 1/4, 199 1/2, 199 3/4, 200, 200 1/4, 200 1/2, 200 3/4, 201, 201 1/4, 201 1/2, 201 3/4, 202, 202 1/4, 202 1/2, 202 3/4, 203, 203 1/4, 203 1/2, 203 3/4, 204, 204 1/4, 204 1/2, 204 3/4, 205, 205 1/4, 205 1/2, 205 3/4, 206, 206 1/4, 206 1/2, 206 3/4, 207, 207 1/4, 207 1/2, 207 3/4, 208, 208 1/4, 208 1/2, 208 3/4, 209, 209 1/4, 209 1/2, 209 3/4, 210, 210 1/4, 210 1/2, 210 3/4, 211, 211 1/4, 211 1/2, 211 3/4, 212, 212 1/4, 212 1/2, 212 3/4, 213, 213 1/4, 213 1/2, 213 3/4, 214, 214 1/4, 214 1/2, 214 3/4, 215, 215 1/4, 215 1/2, 215 3/4, 216, 216 1/4, 216 1/2, 216 3/4, 217, 217 1/4, 217 1/2, 217 3/4, 218, 218 1/4, 218 1/2, 218 3/4, 219, 219 1/4, 219 1/2, 219 3/4, 220, 220 1/4, 220 1/2, 220 3/4, 221, 221 1/4, 221 1/2, 221 3/4, 222, 222 1/4, 222 1/2, 222 3/4, 223, 223 1/4, 223 1/2, 223 3/4, 224, 224 1/4, 224 1/2, 224 3/4, 225, 225 1/4, 225 1/2, 225 3/4, 226, 226 1/4, 226 1/2, 226 3/4, 227, 227 1/4, 227 1/2, 227 3/4, 228, 228 1/4, 228 1/2, 228 3/4, 229, 229 1/4, 229 1/2, 229 3/4, 230, 230 1/4, 230 1/2, 230 3/4, 231, 231 1/4, 231 1/2, 231 3/4, 232, 232 1/4, 232 1/2, 232 3/4, 233, 233 1/4, 233 1/2, 233 3/4, 234, 234 1/4, 234 1/2, 234 3/4, 235, 235 1/4, 235 1/2, 235 3/4, 236, 236 1/4, 236 1/2, 236 3/4, 237, 237 1/4, 237 1/2, 237 3/4, 238, 238 1/4, 238 1/2, 238 3/4, 239, 239 1/4, 239 1/2, 239 3/4, 240, 240 1/4, 240 1/2, 240 3/4, 241, 241 1/4, 241 1/2, 241 3/4, 242, 242 1/4, 242 1/2, 242 3/4, 243, 243 1/4, 243 1/2, 243 3/4, 244, 244 1/4, 244 1/2, 244 3/4, 245, 245 1/4, 245 1/2, 245 3/4, 246, 246 1/4, 246 1/2, 246 3/4, 247, 247 1/4, 247 1/2, 247 3/4, 248, 248 1/4, 248 1/2, 248 3/4, 249, 249 1/4, 249 1/2, 249 3/4, 250, 250 1/4, 250 1/2, 250 3/4, 251, 251 1/4, 251 1/2, 251 3/4, 252, 252 1/4, 252 1/2, 252 3/4, 253, 253 1/4, 253 1/2, 253 3/4, 254, 254 1/4, 254 1/2, 254 3/4, 255, 255 1/4, 255 1/2, 255 3/4, 256, 256 1/4, 256 1/2, 256 3/4, 257, 257 1/4, 257 1/2, 257 3/4, 258, 258 1/4, 258 1/2, 258 3/4, 259, 259 1/4, 259 1/2, 259 3/4, 260, 260 1/4, 260 1/2, 260 3/4, 261, 261 1/4, 261 1/2, 261 3/4, 262, 262 1/4, 262 1/2, 262 3/4, 263, 263 1/4, 263 1/2, 263 3/4, 264, 264 1/4, 264 1/2, 264 3/4, 265, 265 1/4, 265 1/2, 265 3/4, 266, 266 1/4, 266 1/2, 266 3/4, 267, 267 1/4, 267 1/2, 267 3/4, 268, 268 1/4, 268 1/2, 268 3/4, 269, 269 1/4, 269 1/2, 269 3/4, 270, 270 1/4, 270 1/2, 270 3/4, 271, 271 1/4, 271 1/2, 271 3/4, 272, 272 1/4, 272 1/2, 272 3/4, 273, 273 1/4, 273 1/2, 273 3/4, 274, 274 1/4, 274 1/2, 274 3/4, 275, 275 1/4, 275 1/2, 275 3/4, 276, 276 1/4, 276 1/2, 276 3/4, 277, 277 1/4, 277 1/2, 277 3/4, 278, 278 1/4, 278 1/2, 278 3/4, 279, 279 1/4, 279 1/2, 279 3/4, 280, 280 1/4, 280 1/2, 280 3/4, 281, 281 1/4, 281 1/2, 281 3/4, 282, 282 1/4, 282 1/2, 282 3/4, 283, 283 1/4, 283 1/2, 283 3/4, 284, 284 1/4, 284 1/2, 284 3/4, 285, 285 1/4, 285 1/2, 285 3/4, 286, 286 1/4, 286 1/2, 286 3/4, 287, 287 1/4, 287 1/2, 287 3/4, 288, 288 1/4, 288 1/2, 288 3/4, 289, 289 1/4, 289 1/2, 289 3/4, 290, 290 1/4, 290 1/2, 290 3/4, 291, 291 1/4, 291 1/2, 291 3/4, 292, 292 1/4, 292 1/2, 292 3/4, 293, 293 1/4, 293 1/2, 293 3/4, 294, 294 1/4, 294 1/2, 294 3/4, 295, 295 1/4, 295 1/2, 295 3/4, 296, 296 1/4, 296 1/2, 296 3/4, 297, 297 1/4, 297 1/2, 297 3/4, 298, 298 1/4, 298 1/2, 298 3/4, 299, 299 1/4, 299 1/2, 299 3/4, 300, 300 1/4, 300 1/2, 300 3/4, 301, 301 1/4, 301 1/2, 301 3/4, 302, 302 1/4, 302 1/2, 302 3/4, 303, 303 1/4, 303 1/2, 303 3/4, 304, 304 1/4, 304 1/2, 304 3/4, 305, 305 1/4, 305 1/2, 305 3/4, 306, 306 1/4, 306 1/2, 306 3/4, 307, 307 1/4, 307 1/2, 307 3/4, 308, 308 1/4, 308 1/2, 308 3/4, 309, 309 1/4, 309 1/2, 309 3/4, 310, 310 1/4, 310 1/2, 310 3/4, 311, 311 1/4, 311 1/2, 311 3/4, 312, 312 1/4, 312 1/2, 312 3/4, 313, 313 1/4, 313 1/2, 313 3/4, 314, 314 1/4, 314 1/2, 314 3/4, 315, 315 1/4, 315 1/2, 315 3/4, 316, 316 1/4, 316 1/2, 316 3/4, 317, 317 1/4, 317 1/2, 317 3/4, 318, 318 1/4, 318 1/2, 318 3/4, 319, 319 1/4, 319 1/2, 319 3/4, 320, 320 1/4, 320 1/2, 320 3/4, 321, 321 1/4, 321 1/2, 321 3/4, 322, 322 1/4, 322 1/2, 322 3/4, 323, 323 1/4, 323 1/2, 323 3/4, 324, 324 1/4, 324 1/2, 324 3/4, 325, 325 1/4, 325 1/2, 325 3/4, 326, 326 1/4, 326 1/2, 326 3/4, 327, 327 1/4, 327 1/2, 327 3/4, 328, 328 1/4, 328 1/2, 328 3/4, 329, 329 1/4, 329 1/2, 329 3/4, 330, 330 1/4, 330 1/2, 330 3/4, 331, 331 1/4, 331 1/2, 331 3/4, 332, 332 1/4, 332 1/2, 332 3/4, 333, 333 1/4, 333 1/2, 333 3/4, 334, 334 1/4, 334 1/2, 334 3/4, 335, 335 1/4, 335 1/2, 335 3/4, 336, 336 1/4, 336 1/2, 336 3/4, 337, 337 1/4, 337 1/2, 337 3/4, 338, 338 1/4, 338 1/2, 338 3/4, 339, 339 1/4, 339 1/2, 339 3/4, 340, 340 1/4, 340 1/2, 340 3/4, 341, 341 1/4, 341 1/2, 341 3/4, 342, 342 1/4, 342 1/2, 342 3/4, 343, 343 1/4, 343 1/2, 343 3/4, 344, 344 1/4, 344 1/2, 344 3/4, 345, 345 1/4, 345 1/2, 345 3/4, 346, 346 1/4, 346 1/2, 346 3/4, 347, 347 1/4, 347 1/2, 347 3/4, 348, 348 1/4, 348 1/2, 348 3/4, 349, 349 1/4, 349 1/2, 349 3/4, 350, 350 1/4, 350 1/2, 350 3/4, 351, 351 1/4, 351 1/2, 351 3/4, 352, 352 1/4, 352 1/2, 352 3/4, 353, 353 1/4, 353 1/2, 353 3/4, 354, 354 1/4, 354 1/2, 354 3/4, 355, 355 1/4, 355 1/2, 355 3/4, 356, 356 1/4, 356 1/2, 356 3/4, 357, 357 1/4, 357 1/2, 357 3/4, 358, 358 1/4, 358 1/2, 358 3/4, 359, 359 1/4, 359 1/2, 359 3/4, 360, 360 1/4, 360 1/2, 360 3/4, 361, 361 1/4, 361 1/2, 361 3/4, 362, 362 1/4, 362 1/2, 362 3/4, 363, 363 1/4, 363 1/2, 363 3/4, 364, 364 1/4, 364 1/2, 364 3/4, 365, 365 1/4, 365 1/2, 365 3/4, 366, 366 1/4, 366 1/2, 366 3/4, 367, 367 1/4, 367 1/2, 367 3/4, 368, 368 1/4, 368 1/2, 368 3/4, 369, 369 1/4, 369 1/2, 369 3/4, 370, 370 1/4, 370 1/2, 370 3/4, 371, 371 1/4, 371 1/2, 371 3/4, 372, 372 1/4, 372 1/2, 372 3/4, 373, 373 1/4, 373 1/2, 373 3/4, 374, 374 1/4, 374 1/2, 374 3/4, 375, 375 1/4, 375 1/2, 375 3/4, 376, 376 1/4, 376 1/2, 376 3/4, 377, 377 1/4, 377 1/2, 377 3/4, 378, 378 1/4, 378 1/2, 378 3/4, 379, 379 1/4, 379 1/2, 379 3/4, 380, 380 1/4, 380 1/2, 380 3/4, 381, 381 1/4, 381 1/2, 381 3/4, 382, 382 1/4, 382 1/2, 382 3/4, 383, 383 1/4, 383 1/2, 383 3/4, 384, 384 1/4, 384 1/2, 384 3/4, 385, 385 1/4, 385 1/2, 385 3/4, 386, 386 1/4, 386 1/2, 386 3/4, 387, 387 1/4, 387 1/2, 387 3/4, 388, 388 1/4, 388 1/2, 388 3/4, 389, 389 1/4, 389 1/2, 389 3/4, 390, 390 1/4, 390 1/2, 390 3/4, 391, 391 1/4, 391 1/2,			



	<p>M-TEC Corporation 3750 CHURCHILL EVANSVILLE, IN 47615 PH: (574)294-1060 FAX: (574)294-1062</p>	<p>DIVISION: - CUSTOMER: INTERNAL DATE: 02/26/07 DRAWN BY: JWB DWG LOCATION: F:\Engineering Files\ACTIVE SLIDES\ASL\A SHEET: PAGE 2 OF 2 DWG NUMBER: MTS10026</p>	<p>UNLESS OTHERWISE SPECIFIED: ALL DIMENSIONS ARE IN INCHES. DIMENSIONS ARE NON-CUMULATIVE. TOLERANCES: FRACTIONAL: .0005 DECIMAL: .005 ANGULAR: .1°</p>	<p>PROPRIETARY AND CONFIDENTIAL: THE INFORMATION CONTAINED HEREIN IS THE PROPERTY OF M-TEC CORPORATION AND IS NOT TO BE REPRODUCED OR TRANSMITTED IN ANY FORM OR BY ANY MEANS, ELECTRONIC OR MECHANICAL, INCLUDING PHOTOCOPYING, RECORDING, OR BY ANY INFORMATION STORAGE AND RETRIEVAL SYSTEM, WITHOUT THE WRITTEN PERMISSION OF M-TEC CORPORATION.</p>	<p>DESCRIPTION: 34" DUAL ARM (SDFA SLIDE G3)</p>			
---	---	---	--	--	--	--	--	--





REV.	ECN#	DESCRIPTION	DATE	BY
------	------	-------------	------	----



ITEM NO.	PART NUMBER	DESCRIPTION	QTY.
1	PURCHASED	3/8-16 NYLOCK NUT ZP	4
2	PURCHASED	3/8-16 x 3/4 CARR BOLT ZP	4
3	PURCHASED	3/8 FLAT WASHER ZP	4
4	PURCHASED	1/4-20 x 1 3/4 HEX BOLT ZP	4
5	PURCHASED	1/4-20 NYLOCK NUT ZP	4
6	SL0139	INNER DRIVE TUBE	2
7	SL0140	OUTTER DRIVE TUBE	2
8	SL0143	STOP STUD	4
9	SLAN0571L	MOUNTING BRACKET	2
10	SLAN0571R	MOUNTING BRACKET	2
11	SLSB00084	34" SLIDE CHAN. SUB-ASSY.	2
12	SLSB0161	58:1 THOMPSON	2
13	SLSB0248	TRANS / MOTOR SUB-ASSY.	1

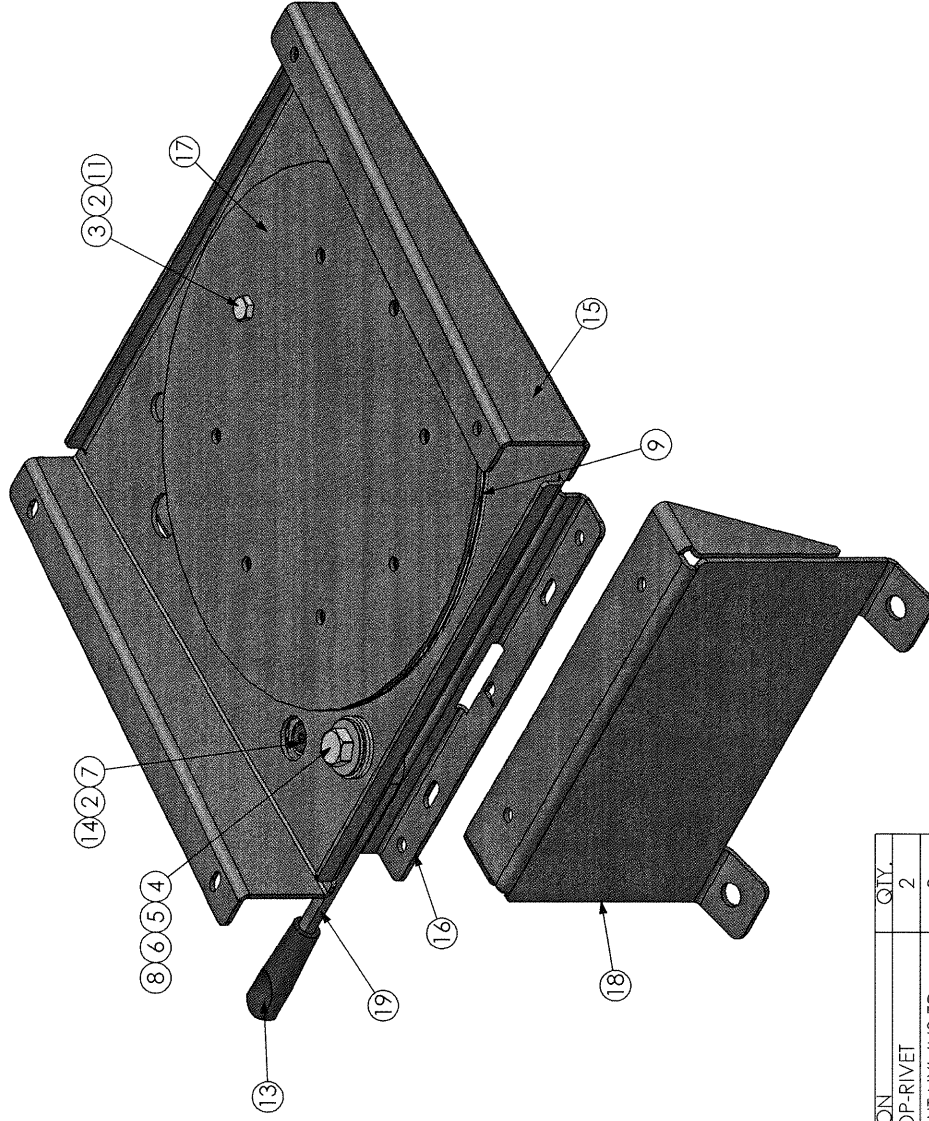
MATERIAL: <b>SEE BOM</b>	WEIGHT:
BLANK SIZE:	UNLESS OTHERWISE SPECIFIED
LASER PROGRAM #:	ALL DIMENSIONS ARE IN INCHES
MAC PROGRAM #:	TOLERANCES ARE NONCUMULATIVE
CINN PROGRAM #:	TOLERANCES:
FINISH: <b>N/A</b>	DECIMAL: $\pm 0.031"$
SURFACE AREA:	FRACTIONAL: $\pm 1/16"$
	ANGULAR: $\pm 1^\circ$

	<b>M-TEC Corporation</b> Steel Div. 2210 Middlebury St. Elkhart, IN 46515 Ph: 574-294-1060 FAX: 574-294-1062	
	THIRD ANG PROJ.	DRAWN BY: SLK
		DATE DRAWN: 11/23/10

PROPRIETARY AND CONFIDENTIAL: THE INFORMATION CONTAINED IN THIS DRAWING IS THE SOLE PROPERTY OF M-TEC CORPORATION. IT IS TO BE USED FOR THE MANUFACTURE OF ANY PRODUCT AND NOT BE REPRODUCED OR COPIED IN ANY MANNER WITHOUT THE WRITTEN CONSENT OF M-TEC CORPORATION.		PAGE 1 OF 1
FILE LOC: F:\Engineering Files\ACTIVE SLIDES\MTSL\		
PART NUMBER: <b>MTSL0027GS</b>		
CUSTOMER: <b>GULF STREAM</b>		
PART DESCRIPTION: <b>29" SLIDE</b>		
CUSTOMER NUM:		REV



A	N/A	NEW DESIGN	7/17/2007	JWB
REV.	ECN#	DESCRIPTION	DATE	BY



ITEM NO.	PART NUMBER	DESCRIPTION	QTY.
1	PURCHASED	3/16" X 9/32" POP-RIVET	2
2	PURCHASED	5/16"-18 HEX LOCK NUT NYL INS ZP	2
3	PURCHASED	5/16"-18 X 1-1/2" HEX BOLT ZP	1
4	PURCHASED	1/2"-13 X 3/4" HEX BOLT GRD 5 ZP	1
5	PURCHASED	.5 SERATED WASHER	1
6	PURCHASED	1/2" STD FLAT WASHER ZP	2
7	PURCHASED	5/16-18 X 1" FLT SKT HD CAP SCREW BLK	1
8	SL0002	1/2-13 PEMNUT (.810 OD)	1
9	SL0153	12" BEARING PLATE	2
10	SL0154	SPRING STUD	2
11	SL0160	LONG BUSHING	8
12	SL0163	3.0" SPRING	1
13	SL0198	PLASTIC HANDLE GRIP	1
14	SL0335	.030 PLASTIC WASHER	2
15	SLCH0994L	SECOND PLATE LH	1
16	SLCH0996	BOTTOM PLATE	1
17	SLPL0694	12" DIA. COVER PLATE	1
18	SLPL0695	LEG	1
19	SLPL0981	SWIVEL HANDLE PLATE LH	1

MATERIAL:	-	GAGE:	-
SOFT:	-	ACTUAL WEIGHT:	-
		DIVISION:	-
		CUSTOMER:	-
		DATE:	08/26/08
		DRAWN BY:	SJE
		DWG LOCATION:	Engineering Files\ACTIVE SLIDES\MTSL
		SHEET:	PAGE 1 OF 2
		DWG NUMBER:	MTSL0031LDX

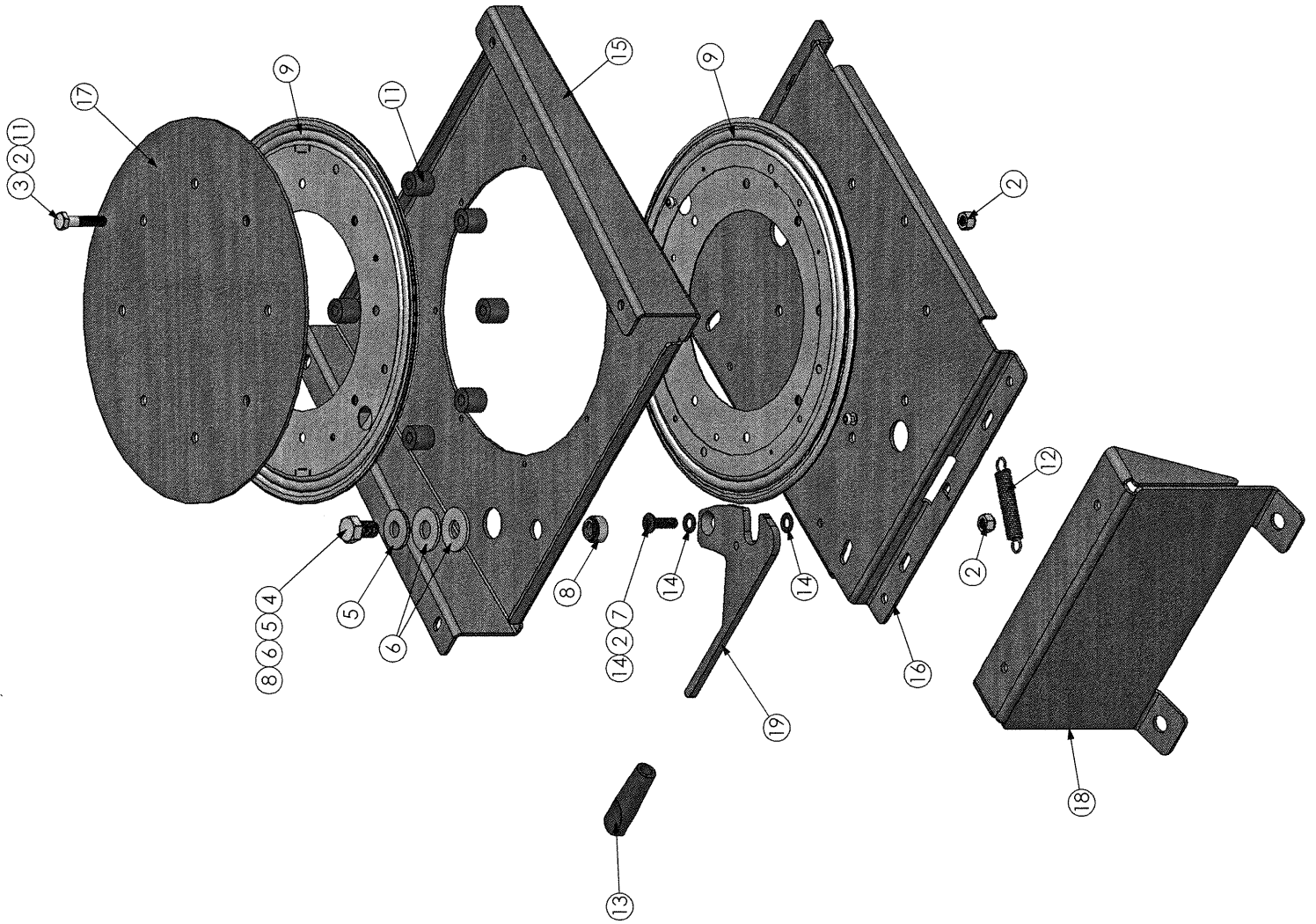


M-TEC Corporation  
2210 Middlebury Street  
Elkhart, IN 46515  
Ph: (574)294-1060  
Fax: (574)294-1062

UNLESS OTHERWISE SPECIFIED  
ALL DIMENSIONS ARE IN INCHES  
TOLERANCES:  
FRACTIONAL: ±.010  
DECIMAL: ±.005  
ANGULAR: ±1°

FOR EIGHT AND  
THE INFORMATION CONTAINED  
HEREIN IS THE PROPERTY OF M-TEC CORPORATION  
NO PART OF THIS DRAWING NOT BE USED TO MANUFACTURE  
ANYTHING SHOWN WITHOUT  
THE WRITTEN PERMISSION OF  
M-TEC CORPORATION

REV.	ECN#	DESCRIPTION	DATE	BY
C		HOLE LOCATION	8/26/2008	SJE
B		CHANGE PROFILE	8/26/2008	SJE
A		HOLE LOCATION/FLANG HEIGHT	8/26/2008	SJE



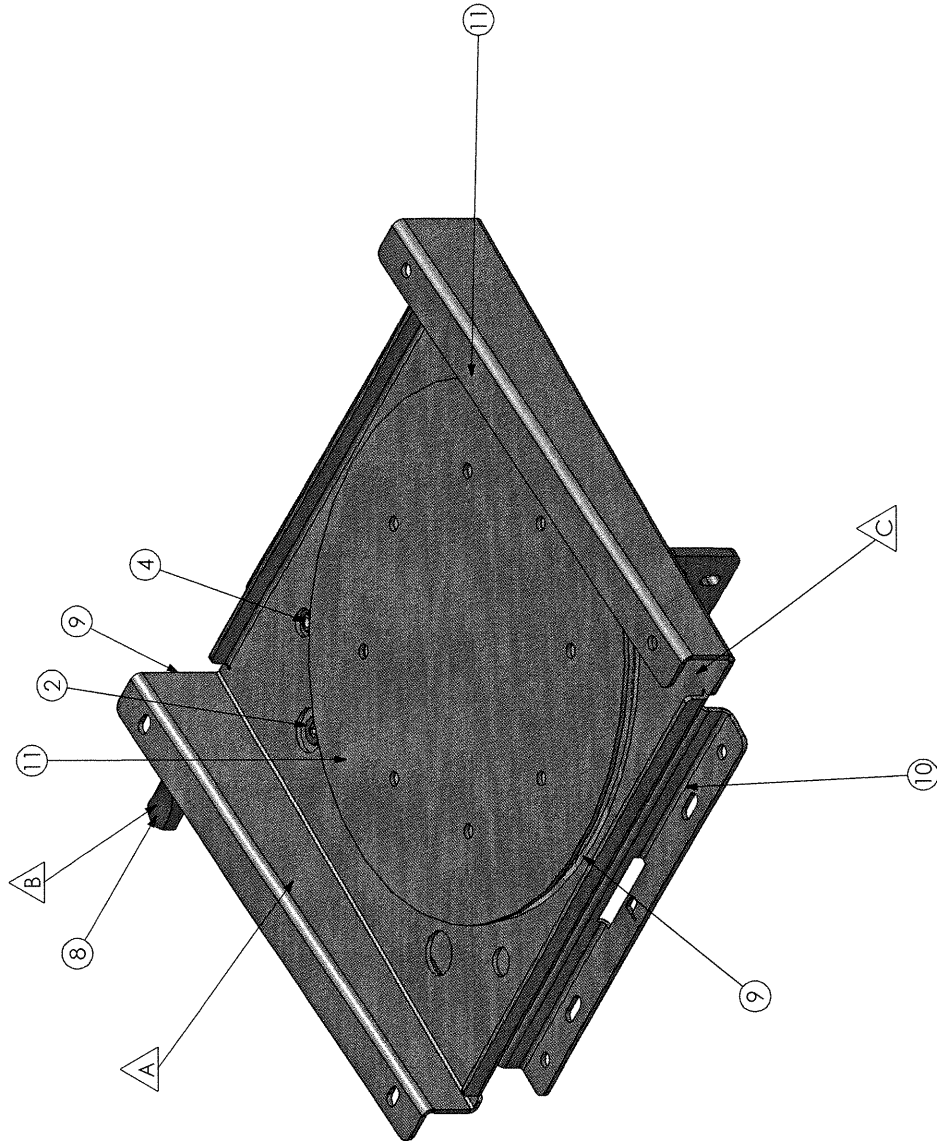
MATERIAL:	-	GAGE:	-
SIZE:	-	ACTUAL WEIGHT:	-
		DIVISION:	-
		CUSTOMER:	-
		DATE:	08/26/08
		DRAWN BY:	SJE
		DWG LOCATION:	Engineering Files \ACTIVE SLIDES\MTSL\
		SHEET:	PAGE 2 OF 2
		DWG NUMBER:	MTSL0031LDX



M-TEC Corporation  
2210 Middlebury Street  
Elkhart, IN 46516  
Ph: (574)294-1088  
Fax: (574)294-1082


UNLESS OTHERWISE  
SPECIFIED  
ALL DIMENSIONS  
ARE IN INCHES.  
DIMENSIONS ARE  
NON-CUMULATIVE.  
TOLERANCES:  
FRACTIONAL: .0031  
DECIMAL: .0031  
ANGULAR: .1°

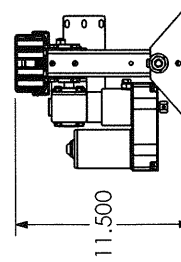
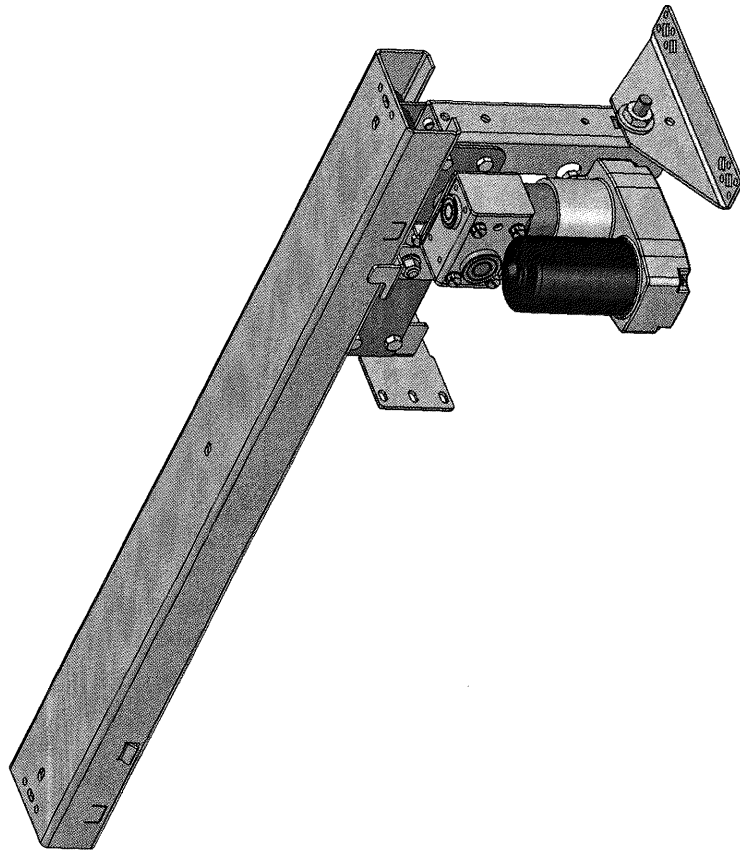
PROPERTY AND  
CONFIDENTIAL  
THE INFORMATION CONTAINED  
HEREIN IS THE PROPERTY OF  
M-TEC CORPORATION.  
PROPERTY OF M-TEC CORPORATION  
THIS DRAWING NOT TO BE  
REPRODUCED OR USED FOR  
ANY OTHER PURPOSE WITHOUT  
CONSENT IN WRITING FROM  
M-TEC CORPORATION




ITEM NO.	PART NUMBER	DESCRIPTION	QTY.
1	hex nut_ai		1
2	PLASTIC WASHER .030	WASHER	2
3	SCHSCREW 0.3125-18x1-HX-C		1
4	self-clinching nut_pmi		1
5	SL0153	12" BEARING PLATE	2
6	SL0154	SPRING STUD	2
7	SL0163	3.0" SPRING	1
8	SL0198	PLASTIC HANDLE GRIP	1
9	SLCH0994	SECOND PLATE	1
10	SLCH0996	BOTTOM PLATE	1
11	SLPL0694	12" DIA. COVER PLATE	1
12	SLPL0981	SWIVEL HANDLE PLATE LH	1
13	SLPL1156	ADAPTER PLATE	1

REV.	ECN#	DESCRIPTION	DATE	BY
C		CHANGED HOLE LOCATION	8/25/2008	SJE
B		CHANGE HANDLE/ADDED GRIP	8/25/2008	SJE
A		CHANGE PLATE	8/25/2008	SJE

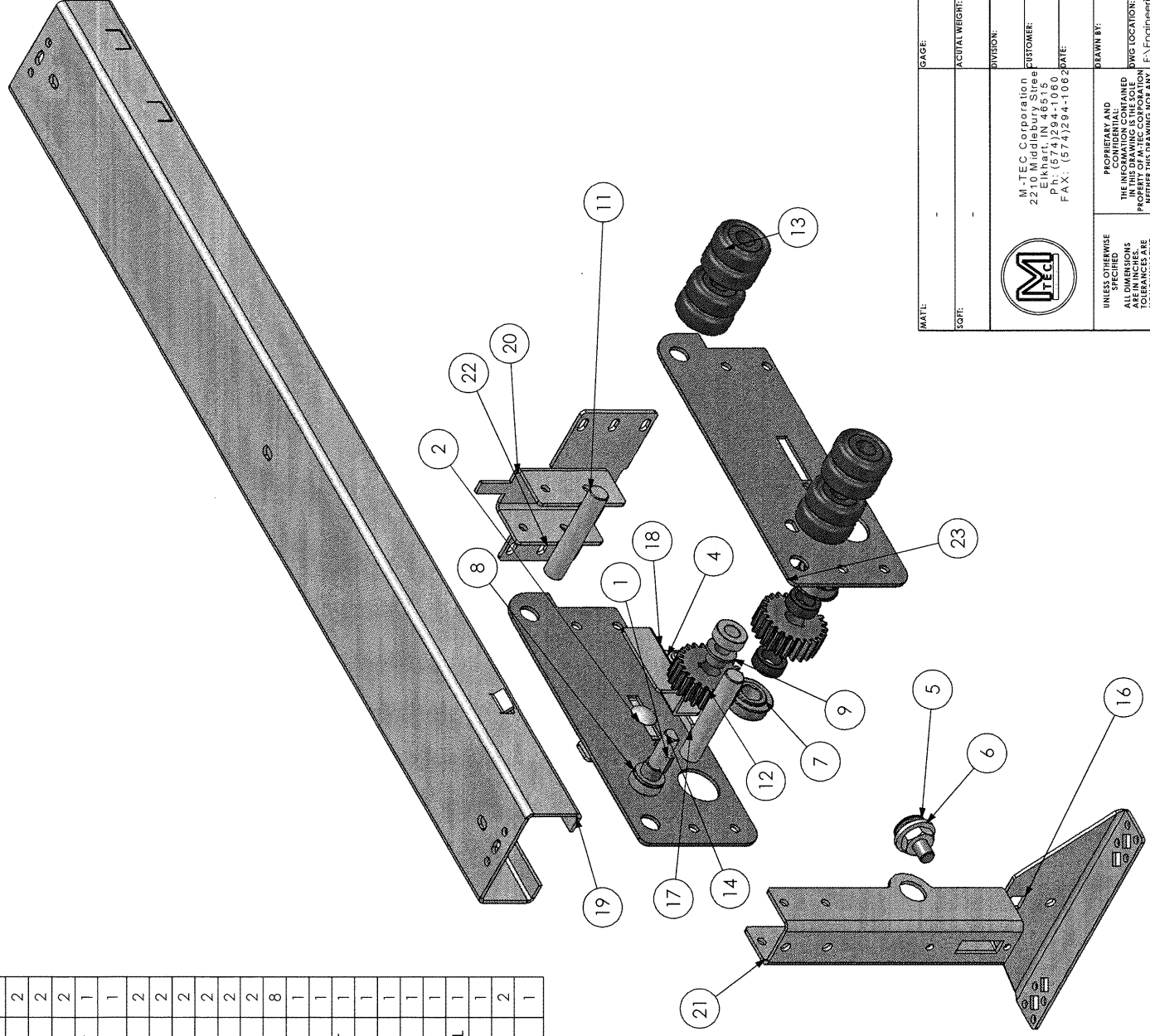
MATERIAL:	-	GAGE:	-
SOFT:	-	ACTUAL WEIGHT:	-
<div>  <p> M-TEC Corporation  2210 Middlebury Street  Elkhart, IN 46516  TEL: (574) 294-1082  FAX: (574) 294-1082 </p> </div>			
<div> <div> UNLESS OTHERWISE SPECIFIED  ALL DIMENSIONS ARE IN INCHES  DECIMALS ARE TO BE NONCUMULATIVE  TOLERANCES:  FRACTIONAL: <math>\pm 1/16</math>  ANGULAR: <math>\pm 1^\circ</math> </div> <div> PROPERTY AND CONFIDENTIALITY  THE INFORMATION CONTAINED HEREIN IS THE PROPERTY OF M-TEC CORPORATION  NO PART OF THIS DRAWING IS TO BE REPRODUCED OR USED IN ANY MANNER WITHOUT THE WRITTEN CONSENT OF M-TEC CORPORATION </div> </div>			
CUSTOMER:			-
DATE:			08/02/07
DRAWN BY:			JWB
DWG LOCATION:			F:\Engineering Files\ACTIVE SLIDES\MIS\
SHEET:			PAGE 1 OF 1
DWG NUMBER:			MTSL0031RDX



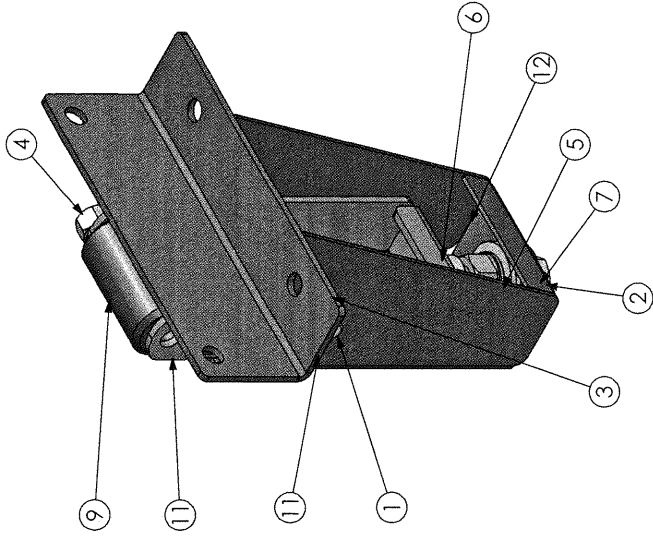
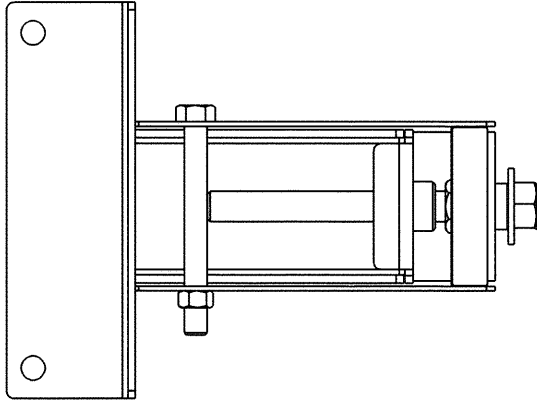
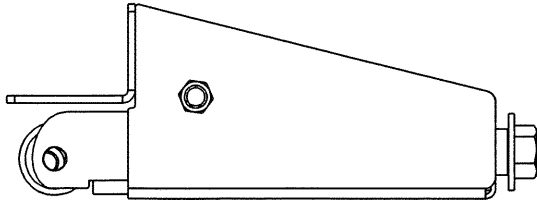
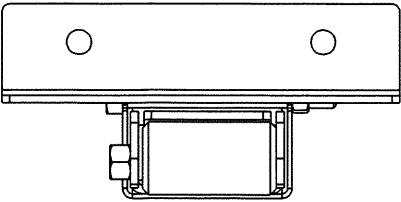
MATE:	-	GAGE	-
SGR:	-	ACTUAL WEIGHT:	-
		DIVISION:	-
		CUSTOMER:	-
		DATE:	-
		DRAWN BY:	JWB
		DWG LOCATION:	F:\Engineering Files\ACTIVE SUBFILES
		SHEET:	PAGE 1 OF 2
		DWG NUMBER:	MTSL00331Y
<div><div><div></div><div>M-TEC Corporation 2210 Middlebury Street Elkhart, IN 46515 P: (574)294-1060 F AX: (574)294-1062</div></div><div><div>PROPERTY AND CONFIDENTIAL</div><div>THE INFORMATION CONTAINED HEREIN IS THE PROPERTY OF M-TEC CORPORATION. NEITHER THIS DRAWING NOR ANY PART THEREOF IS TO BE REPRODUCED OR USED IN ANY MANNER WITHOUT THE WRITTEN CONSENT IN WRITING FROM M-TEC CORPORATION</div></div></div>			
UNLESS OTHERWISE SPECIFIED:	ALL DIMENSIONS ARE IN INCHES, FRACTIONAL ANGULAR TOLERANCES: +0.001 -0.001 1/16		
DESCRIPTION:			

REV.	ECN#	DESCRIPTION	DATE	BY
------	------	-------------	------	----

ITEM NO.	PART NUMBER	DESCRIPTION	QTY.
1	PURCHASED	605 WOODRUFF KEY	1
2	PURCHASED	3/8-16 x 3/4 CARR BOLT ZP	2
3	PURCHASED	3/8 FLAT WASHER ZP	2
4	PURCHASED	3/8-16 NYLOCK NUT ZP	2
5	PURCHASED	1/2-13 x 1-1/4 CARR BOLT ZP	1
6	PURCHASED	1/2 HARDENED SERRATED WASHER	1
7	SL0006	F350-13 FLANGED BEARING	2
8	SL0033	SPACER	2
9	SL0036	BRONZE BEARING	2
10	SL0039	3/8" SPACER	2
11	SL0053	5/8 ROLLER SHAFT	2
12	SL0054	LARGE DRIVE GEAR	2
13	SL0071	ROLLER 1 3/4"	8
14	SL0072	.500 TRANSMISSION SHAFT	1
15	SL0076	GEAR RACK 32"	1
16	SLAN0291	FLOOR MOUNTING BRACKET	1
17	SLAN0734	GUIDE BRACKET	1
18	SLAN0741	GUIDE BRACKET	1
19	SLCH0286	34" SLIDE CHANNEL	1
20	SLCH0297	WALL MOUNTING CHANNEL	1
21	SLCH0733	FLOOR MOUNTING CHANNEL	1
22	SLPL0662	WALL MOUNT BRACKET	1
23	SLPL0735	SIDE PLATE	2
24	N	HHJNUT 0.5000-20-D-	1




MATL:	-	GAGE:	-
SOFT:	-	ACTUAL WEIGHT:	-
DIVISION:	SLIDE	DRAWN BY:	SJE
CUSTOMER:	M-TEC Corporation 2210 Middlebury Street Elkhart, IN 46515 Ph: (674)294-1060 FAX: (674)294-1062	DATE:	3/27/08
PROPERTY AND CONFIDENTIALITY NOTICE: THE INFORMATION CONTAINED HEREIN IS UNCLASSIFIED AND IS NOT TO BE RELEASED TO THE PUBLIC WITHOUT THE WRITTEN CONSENT OF M-TEC CORPORATION.	PROPERTY AND CONFIDENTIALITY NOTICE: THE INFORMATION CONTAINED HEREIN IS UNCLASSIFIED AND IS NOT TO BE RELEASED TO THE PUBLIC WITHOUT THE WRITTEN CONSENT OF M-TEC CORPORATION.	DWG LOCATION:	F:\Engineering Files\ACTIVE SLIDES\MTSLA
UNLESS OTHERWISE SPECIFIED, ALL DIMENSIONS ARE IN INCHES. DIMENSIONS IN PARENTHESES ARE NON-CUMULATIVE. TOLERANCES: DECIMAL: .0031 FRACTIONAL: 1/16 ANGULAR: 1/2°	UNLESS OTHERWISE SPECIFIED, ALL DIMENSIONS ARE IN INCHES. DIMENSIONS IN PARENTHESES ARE NON-CUMULATIVE. TOLERANCES: DECIMAL: .0031 FRACTIONAL: 1/16 ANGULAR: 1/2°	SHEET:	PAGE 2 OF 2
DESCRIPTION:	34" WW SLIDE	DWG NUMBER:	MTSL0033JY



ITEM NO.	PART NUMBER	DESCRIPTION	QTY.
1	HBOLT 0.3750-16x3.5x3.5-N		1
2	HBOLT 0.5000-13x5x5-N		1
3	HNUT 0.3125-18-D-N		1
4	HNUT 0.3750-16-D-N		1
5	HNUT 0.5000-13-D-N		1
6	PEM S-0813-1 ZI-N		1
7	Regular FW 0.5		3
8	SL0045	1/4" SPACER	1
9	SL0063	1.3/16 DIA X 2.3/16 ROLLER	1
10	SL0064	3/8 ID X 1.3/16 BUSHING	1
11	SLCH1126	INNER CHANNEL	1
12	SLSB0223	OUTER CHANNEL WELDMENT	1

MATL:	-	GAGE:	-
SOFT:	-	ACTUAL WEIGHT:	-
DIVISION:			
CUSTOMER:			
DATE:			
DRAWN BY:			
DWG LOCATION:			
SHEET:			
DWG NUMBER:			



M-TEC Corporation  
2210 Middlebury Street  
Elkhart, IN 46515  
TEL: (574) 244-1085  
FAX: (574) 234-1082

PROPERTY AND  
CONFIDENTIAL

THE INFORMATION CONTAINED  
HEREIN IS THE PROPERTY OF M-TEC CORPORATION  
PROPERTY OF M-TEC CORPORATION  
NEITHER THIS DRAWING NOR ANY  
PART THEREOF IS TO BE REPRODUCED  
OR USED IN ANY MANNER WITHOUT  
THE WRITTEN PERMISSION OF  
M-TEC CORPORATION

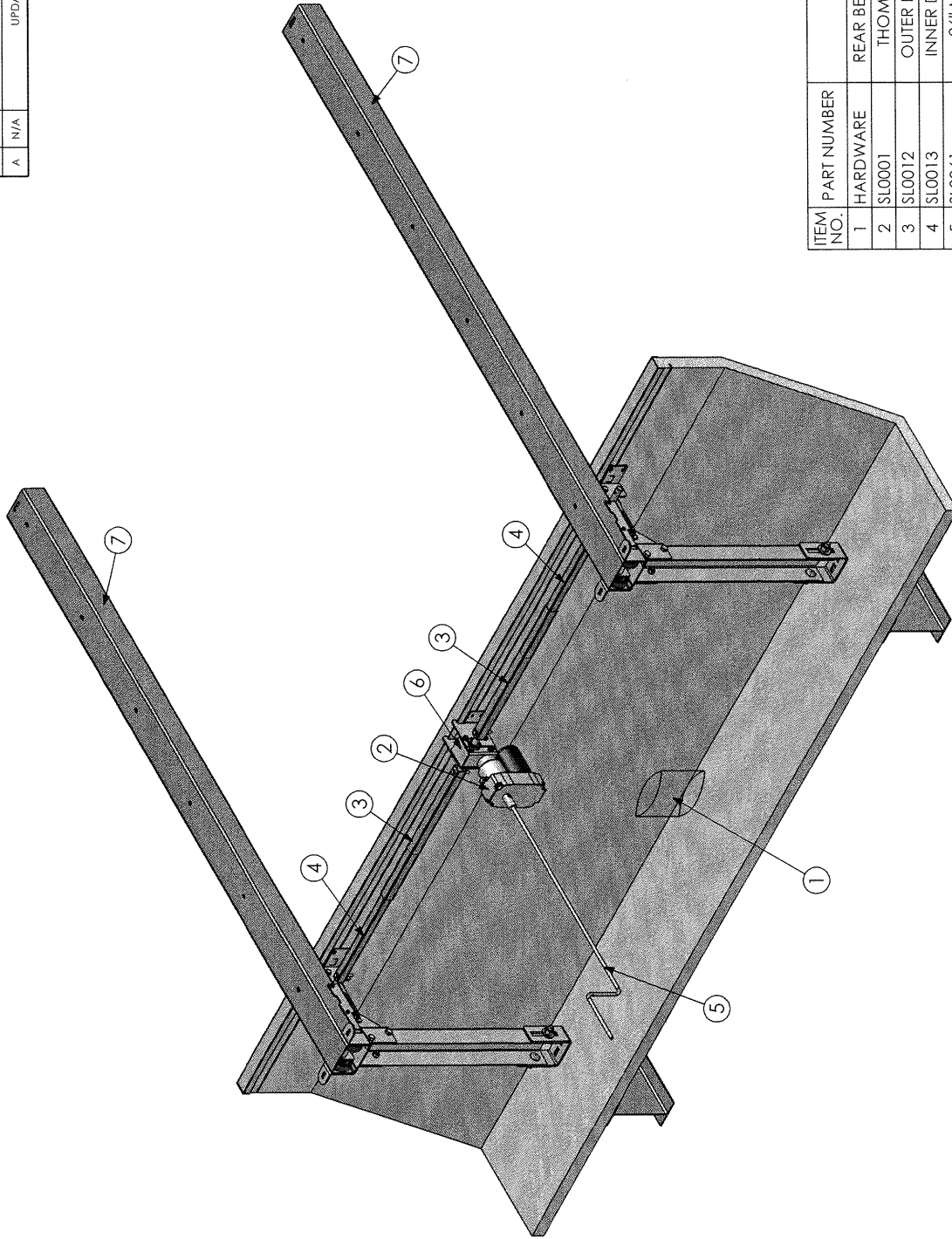
UNLESS OTHERWISE  
SPECIFIED

ALL DIMENSIONS  
ARE IN INCHES  
UNLESS OTHERWISE  
SPECIFIED

TOLERANCES:  
FRACTIONAL: 2/16  
DECIMAL: .0031  
ANGULAR: 1/2

ROOM ROLLER ASSEMBLY			
PAGE 1 OF 1			
MTSLO0044			

REV	ECN#	DESCRIPTION	DATE	BY
A	N/A	UPDATED AND REDRAWN	09/01/10	SLK



A

ITEM NO.	PART NUMBER	DESCRIPTION	QTY.
1	HARDWARE	REAR BED SLIDE HARDWARE PACK	1
2	SL0001	THOMSON MOTOR GEAR BOX	1
3	SL0012	OUTER DRIVE TUBE (CUT TWO 17")	1
4	SL0013	INNER DRIVE TUBE (CUT TWO 17")	1
5	SL0061	26" MANUAL CRANK ASSEM	1
6	SLSB0052	TRANSMISSION SUB-ASSY.	1
7	SLSB0233	SLIDE ARM SUB-ASSY.	2

PROPRIETARY AND CONFIDENTIAL: THE INFORMATION CONTAINED IN THIS DRAWING IS THE SOLE PROPERTY OF M-TEC CORPORATION. NEITHER THIS DRAWING OR ANY PORTION HEREOF IS TO BE REPRODUCED, COPIED, OR TRANSMITTED IN ANY FORM OR BY ANY MEANS, WITHOUT THE WRITTEN CONSENT OF M-TEC CORPORATION.

M-TEC Corporation  
Steel Div.  
2210 Middlebury St.  
Elkhart, IN 46515  
Ph: 574-294-1060  
FAX: 574-294-1062



WEIGHT:  
UNLESS OTHERWISE SPECIFIED

ALL DIMENSIONS ARE IN INCHES  
TOLERANCES ARE NONCUMULATIVE

TOLERANCES:  
DECIMAL:  $\pm 0.031"$   
FRACTIONAL:  $\pm 1/16"$   
ANGULAR:  $\pm 1^\circ$

MATERIAL: SEE BOM

BLANK SIZE:

LASER PROGRAM #:

MAC PROGRAM #:

CINN PROGRAM #:

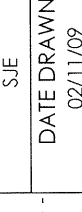
FINISH: N/A

SURFACE AREA:

THIRD ANG PROJ.  
SJE  
DATE DRAWN: 02/11/09

DRAWN BY:

DATE DRAWN:



FILE LOC: F:\Engineering Files\ACTIVE SLIDES\MTSL\

PART NUMBER: MTS10045

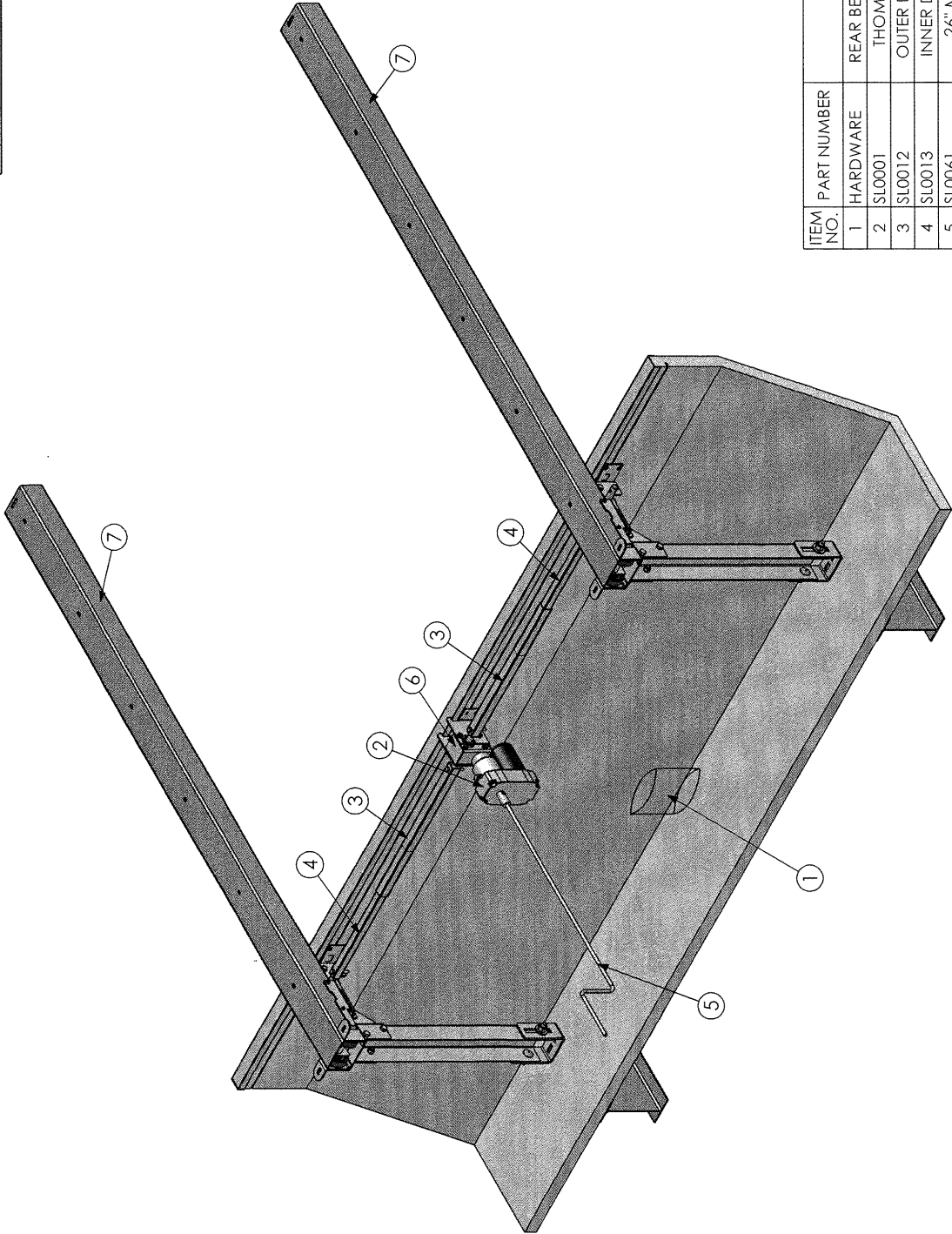
CUSTOMER: M-TEC

PART DESCRIPTION: REAR BED SLIDE 74"

CUSTOMER NUM:

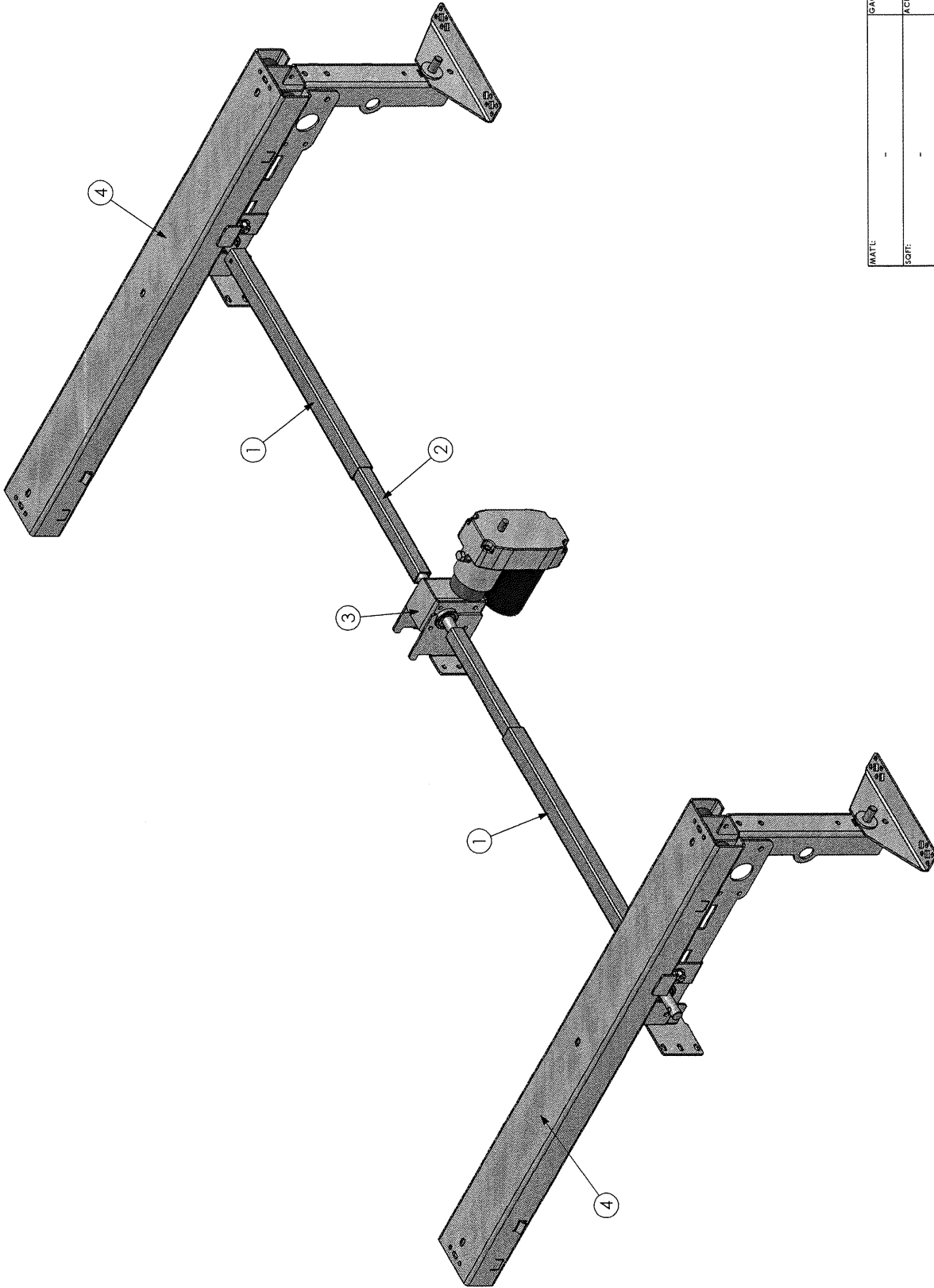
REV A






ITEM NO.	PART NUMBER	DESCRIPTION	QTY.
1	HARDWARE	REAR BED SLIDE HARDWARE PACK	1
2	SL0001	THOMSON MOTOR GEAR BOX	1
3	SL0012	OUTER DRIVE TUBE (CUT TWO 17")	1
4	SL0013	INNER DRIVE TUBE (CUT TWO 17")	1
5	SL0061	26" MANUAL CRANK ASSEM	1
6	SLSB0052	TRANSMISSION SUB-ASSY.	1
7	SLSB0233	SLIDE ARM SUB-ASSY.	2

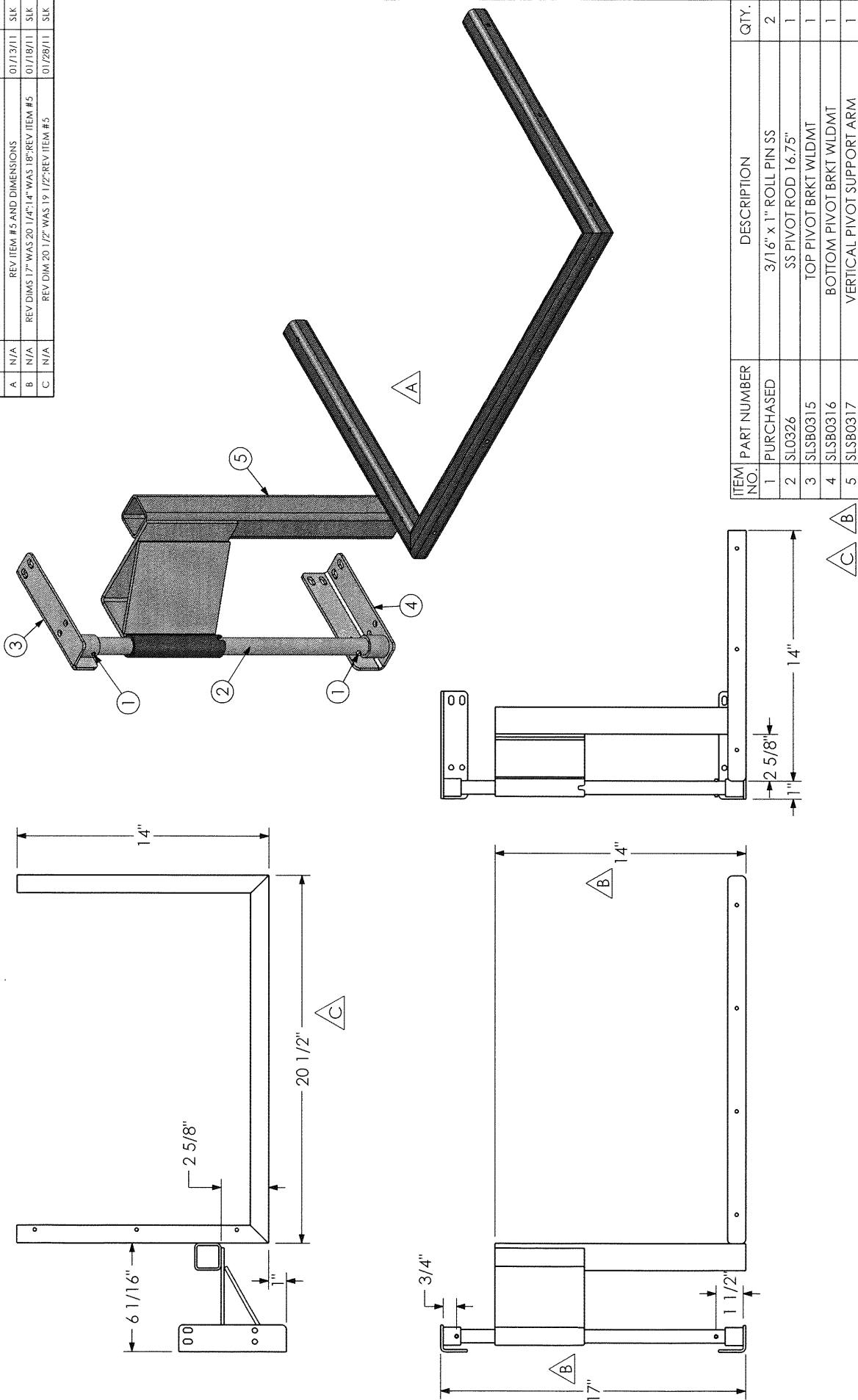
<b>MATERIAL: SEE BOM</b> <b>BLANK SIZE:</b> <b>LASER PROGRAM #:</b> <b>MAC PROGRAM #:</b> <b>CINN PROGRAM #:</b> <b>FINISH: N/A</b> <b>SURFACE AREA:</b>	<b>WEIGHT:</b> <b>UNLESS OTHERWISE SPECIFIED</b> <b>ALL DIMENSIONS ARE IN INCHES</b> <b>TOLERANCES ARE NONCUMULATIVE</b> <b>TOLERANCES:</b> DECIMAL: $\pm 0.031"$ FACTORIAL: $\pm 1/16"$ ANGULAR: $\pm 1^\circ$		<b>M-TEC Corporation</b> <b>Steel Div.</b> 2210 Middlebury St. Elkhart, IN 46515 Ph: 574-294-1060 FAX: 574-294-1062	PROPRIETARY AND CONFIDENTIAL: THE INFORMATION CONTAINED IN THIS DRAWING IS THE SOLE PROPERTY OF M-TEC CORPORATION. NEITHER THIS DRAWING OR ANY PRODUCTION THEREOF MAY BE USED TO REPRODUCE OR MANUFACTURE ANYTHING WITHOUT THE WRITTEN CONSENT OF M-TEC CORPORATION.	PAGE 1 OF 1
	<b>THIRD ANG PROJ.</b> 		<b>DRAWN BY:</b> SLK <b>DATE DRAWN:</b> 09/02/10	<b>FILE LOC: F:\Engineering Files\ACTIVE SLIDES\MTSL\</b> <b>PART NUMBER: MTS10045JY</b> <b>CUSTOMER: M-TEC</b> <b>PART DESCRIPTION: REAR BED SLIDE 74"</b> <b>CUSTOMER NUM:</b>	REV



ITEM NO.	PART NUMBER	DESCRIPTION	QTY.
1	SL0012	OUTER DRIVE TUBE	2
2	SL0013	INNER DRIVE TUBE	2
3	SLSB0196	TRANS / MOTOR SUB-ASSY.	1
4	SLSB0254	34" SLIDE	2

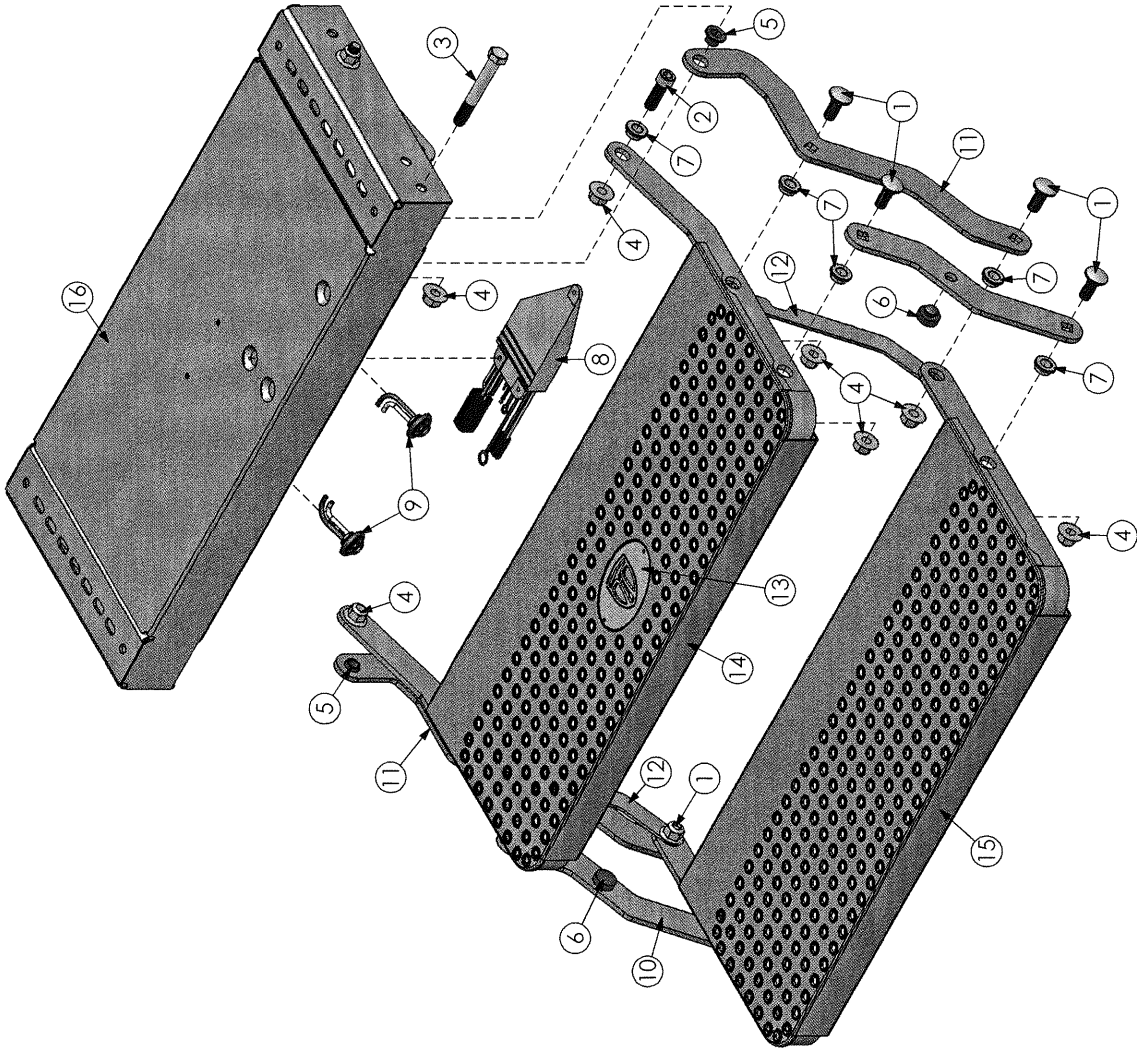
MATERIAL:	-	GAGE:	-
SORT:	-	ACTUAL WEIGHT:	-
 M-TEC Corporation 2210 Middlebury Street Elkhart, IN 46515 TEL: (574) 294-1085 FAX: (574) 294-1082		DIVISION:	-
		CUSTOMER:	-
		DATE:	9/11/09
		DRAWN BY:	SJE
UNLESS OTHERWISE SPECIFIED ALL DIMENSIONS ARE IN INCHES DIMENSIONS ARE NON-CUMULATIVE TOLERANCES: FRACTIONAL: 1/16 DECIMAL: .0031 ANGULAR: 1°		PROPERTY AND CONFIDENTIAL THE INFORMATION CONTAINED HEREIN IS THE PROPERTY OF M-TEC CORPORATION REPRODUCTION OR ANY USE WITHOUT THE WRITTEN CONSENT OF M-TEC CORPORATION IS PROHIBITED	
DESCRIPTION: 34" DUAL SLIDE		DWG LOCATION:	F:\Engineering Files\ACTIVE SLIDES\MTSL\
REV.		ECN#	PAGE 1 OF 1
DATE		BY	MTSL0053JY

REV.	ECN#	DESCRIPTION	DATE	BY
A	N/A	REV ITEM #5 AND DIMENSIONS	01/13/11	SLK
B	N/A	REV DIMS 17" WAS 20 1/4"; 14" WAS 18"; REV ITEM #5	01/18/11	SLK
C	N/A	REV DIM 20 1/2" WAS 19 1/2"; REV ITEM #5	01/28/11	SLK



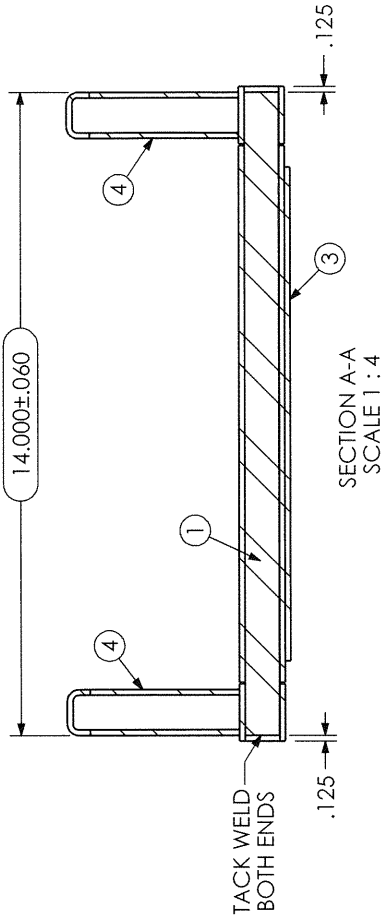
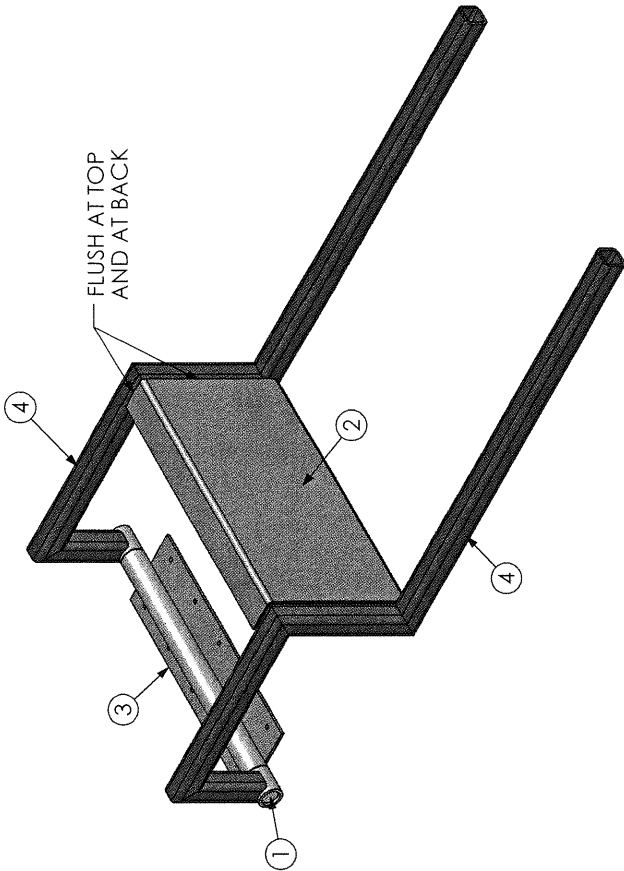
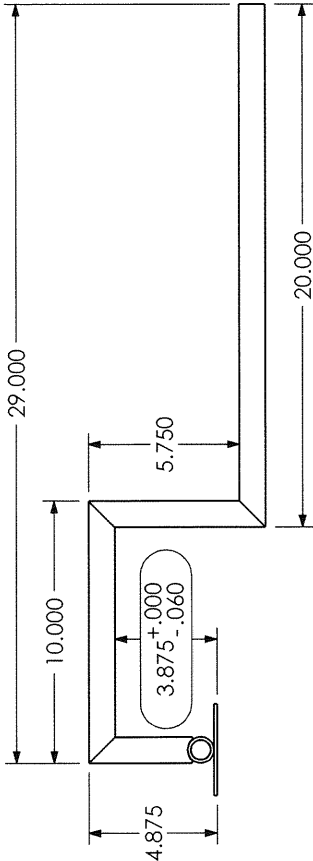
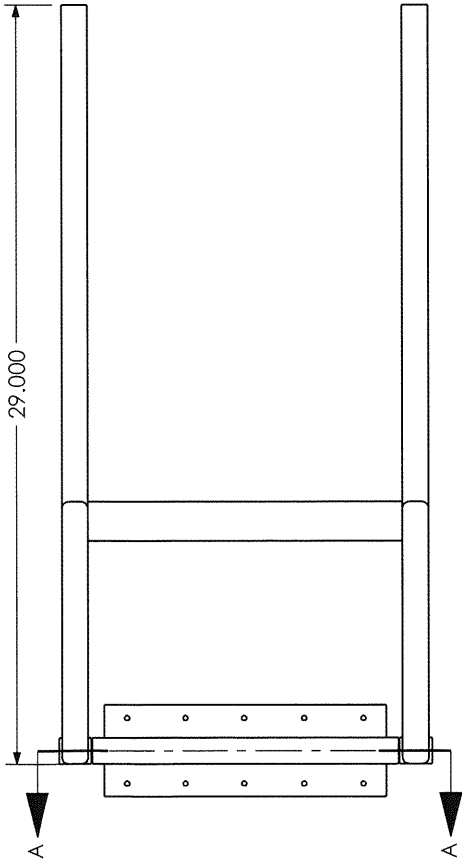
ITEM NO.	PART NUMBER	DESCRIPTION	QTY.
1	PURCHASED	3/16" x 1" ROLL PIN SS	2
2	SL0326	SS PIVOT ROD 16.75"	1
3	SLSB0315	TOP PIVOT BRKT W/DMT	1
4	SLSB0316	BOTTOM PIVOT BRKT W/DMT	1
5	SLSB0317	VERTICAL PIVOT SUPPORT ARM	1

<b>MATERIAL: SEE BOM</b> <b>BLANK SIZE:</b> <b>LASER PROGRAM #:</b> <b>MAC PROGRAM #:</b> <b>CINN PROGRAM #:</b> <b>FINISH: N/A</b> <b>SURFACE AREA:</b>		<b>WEIGHT:</b> <b>UNLESS OTHERWISE SPECIFIED</b> <b>ALL DIMENSIONS ARE IN INCHES</b> <b>TOLERANCES ARE NONCUMULATIVE</b> <b>TOLERANCES:</b> DECIMAL: $\pm 0.031"$ FRACTIONAL: $\pm 1/16"$ ANGULAR: $\pm 1^\circ$	
<b>THIRD ANG PROJ.</b> 		<b>DRAWN BY:</b> SLK <b>DATE DRAWN:</b> 01/06/11	
<b>M-TEC Corporation</b> <b>Steel Div.</b> <b>2210 Middlebury St.</b> <b>Elkhart, IN 46515</b> <b>Ph: 574-294-1060</b> <b>FAX: 574-294-1062</b>		<b>FILE LOC: F:\Engineering Files\ACTIVE SLIDES\MTSL\</b> <b>PART NUMBER: MTSLO067</b> <b>CUSTOMER: M-TEC</b> <b>PART DESCRIPTION: SLIDE OUT KITCHEN</b> <b>CUSTOMER NUM:</b>	
<b>PROPRIETARY AND CONFIDENTIAL: THE INFORMATION CONTAINED IN THIS DRAWING IS THE SOLE PROPERTY OF M-TEC CORPORATION. NEITHER THIS DRAWING OR ANY PORTION THEREOF MAY BE USED TO REPRODUCE OR IN ANY MANNER, IN ANY MANNER, WITHOUT THE WRITTEN PERMISSION OF M-TEC CORPORATION.</b>		<b>PAGE 1 OF 1</b>	
<b>REV</b> <b>C</b>		<b>REV</b> <b>C</b>	



ITEM NO.	PART NUMBER	DESCRIPTION	Default /QTY.
1	PURCHASED	1/2"-13 X 1-1/4" CARR BOLT ZP	8
2	PURCHASED	1/2"-13 X 1-1/2" SHCS ZP	2
3	PURCHASED	1/2"-13 X 4" HEX HD CAP SC ZP	2
4	PURCHASED	1/2"-13 NYL FLANGE NUT ZP	12
5	SL0036	BRONZE BEARING	2
6	SL0291	1" X 5/16" RUBBER BUMPER	2
7	SL0314	0.75 STEP SPACER	10
8	SL0315	STEP CONTROL	1
9	SL0317	LED LIGHT	2
10	SLPL1901	2 STEP FRONT LEVER	2
11	SLPL1902	2 STEP BACK LEVER	2
12	SLPL2137	REINFORCEMENT ARM	2
13	SLPL2543	THOR LOGO	1
14	SLSB0348	29" TOP TREAD WLDMT CSTM	1
15	SLSB0349	29" LOWER TREAD WLDMT ALL DIMP	1
16	SLSB0350	29" TOP FRAME FRONT MOUNT	1

<b>M-TEC Corporation</b> Steel Div. 2210 Middlebury St. Elkhart, IN 46515 Ph: 574-294-1060 FAX: 574-294-1062		PROPRIETARY AND CONFIDENTIAL: THE INFORMATION CONTAINED IN THIS DRAWING IS THE SOLE PROPERTY OF M-TEC CORPORATION. NEITHER THIS DRAWING OR ANY PRODUCTION THEREOF MAY BE USED TO MANUFACTURE ANYTHING WITHOUT THE WRITTEN CONSENT OF M-TEC CORPORATION.		PAGE 1 OF 1	
<b>WEIGHT:</b> UNLESS OTHERWISE SPECIFIED ALL DIMENSIONS ARE IN INCHES TOLERANCES ARE NONCUMULATIVE TOLERANCES: DECIMAL: ± 0.031" FRACTIONAL: ± 1/16" ANGULAR: ± 1°		FILE LOC: F:\Engineering Files\ACTIVE SLIDES\MTSL\			
<b>MATERIAL: SEE BOM</b>		PART NUMBER: <b>MTSL0069</b>			
<b>BLANK SIZE:</b>		CUSTOMER: <b>M-TEC</b>			
<b>LASER PROGRAM #:</b>		PART DESCRIPTION: <b>29" ELECTRIC STEP</b>			
<b>MAC PROGRAM #:</b>		CUSTOMER NUM:			
<b>CINN PROGRAM #:</b>		REV			
<b>FINISH: N/A</b>		DATE DRAWN: 08/05/11			
<b>SURFACE AREA:</b>		THIRD ANG PROJ.			



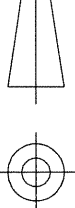
ITEM NO.	PART NUMBER	DESCRIPTION	Default /QTY.
1	SL0347	SS PIVOT ROD 14.0"	1
2	SLCH2544	CHANNEL SPACER 6.5" X 12.0"	1
3	SLSB0353	PIVOT PLATE WLDMT	1
4	SLSB0354	PIVOT HANDLE WLDMT	2

MATERIAL: <b>SEE BOM</b>	WEIGHT:
BLANK SIZE:	UNLESS OTHERWISE SPECIFIED
LASER PROGRAM #:	ALL DIMENSIONS ARE IN INCHES
MAC PROGRAM #:	TOLERANCES ARE NONCUMULATIVE
CINN PROGRAM #:	TOLERANCES:
FINISH: <b>POWDER COAT</b>	DECIMAL: $\pm 0.031"$
SURFACE AREA:	FRACTIONAL: $\pm 1/16"$
	ANGULAR: $\pm 1^\circ$



M-TEC Corporation  
Steel Div.  
2210 Middlebury St.  
Elkhart, IN 46515  
Ph: 574-294-1060  
FAX: 574-294-1062

THIRD ANG PROJ.



DRAWN BY:

SLK

DATE DRAWN:

08/11/11

PROPRIETARY AND CONFIDENTIAL: THE INFORMATION CONTAINED IN THIS DRAWING IS THE SOLE PROPERTY OF M-TEC CORPORATION. NO PART OF THIS DRAWING OR ANY INFORMATION THEREON MAY BE USED TO REPRODUCE OR TRANSMIT IN ANY FORM OR BY ANY MEANS WITHOUT THE WRITTEN CONSENT OF M-TEC CORPORATION.

PAGE 1 OF 1

FILE LOC: F:\Engineering Files\ACTIVE SLIDES\MTSL\

PART NUMBER: **MTSL0070**

CUSTOMER: **M-TEC**

PART DESCRIPTION: **STOVE TOP FLIPPER**

CUSTOMER NUM:

REV

