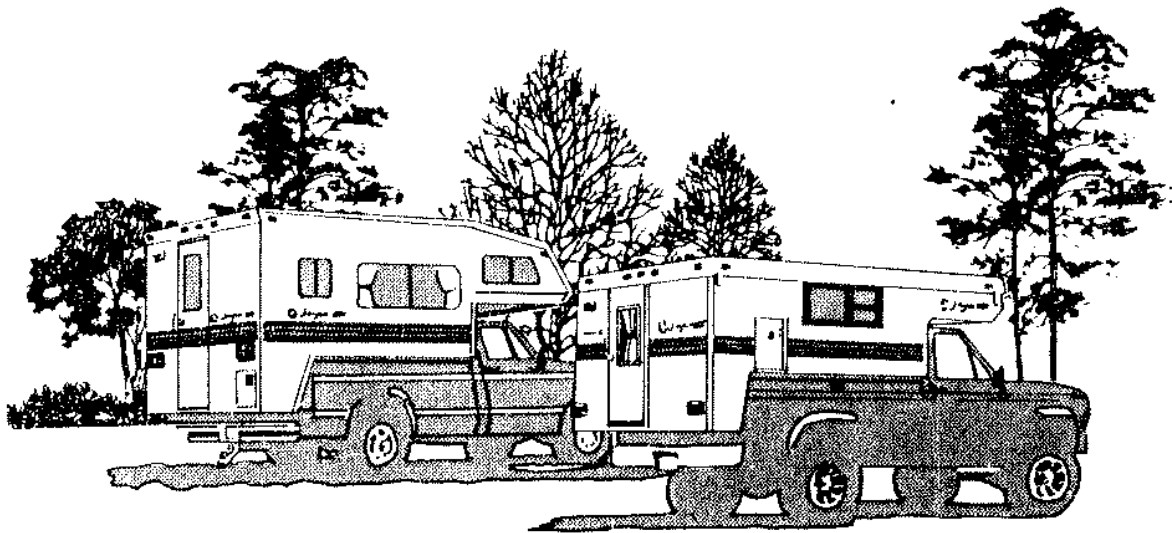


92-111091



**HUNTER SERIES
and
SPORTSTER SERIES
TRUCK CAMPER**



OWNER'S MANUAL

Cunningham Campers, Inc.

5201 Highway 62
Jeffersonville, IN 47130

1-812-284-0276 Option 3



Welcome to our Used Jayco Owners' Group

We Know Jayco Parts!

As a group member you receive **10% OFF** any order for parts, not already on sale. Just call us **with your VIN #** and we will find what you need and ship it directly from Jayco to your front door.

Like Jayco, we are family owned and operated. Our courteous professionals are here to help make your shopping experience as pleasant as humanly possible.

1-812-284-0276

Use Option 3 For Parts

<http://parts.cunninghamcampers.com/jaycoclub>

Cunningham's – Selling & Servicing Jayco RV's for OVER 38 Years!

WELCOME

On the behalf of Jayco, we thank you for purchasing your new Jayco vehicle. We have carefully engineered and manufactured your R.V. with available quality materials. We believe in quality and we emphasize quality in every way to our employees.

As a manufacturer of recreational vehicles, we depend on your satisfaction to stay in business. That's why we stand behind our products with our warranty and customer service program to do everything reasonable to keep you satisfied if a problem arises.

We hope you'll enjoy the outdoors as much as we do. Camping is a wonderful way to relax and travel with your family. Remember, dispose of your litter and trash when you break camp so others can enjoy the outdoors and nature as much as you did. Please join our fight for a cleaner world.

The Jayco Family

YOUR NEW JAYCO IS YOUR PASSPORT TO A WHOLE WORLD OF NEW FRIENDS,
CAMPING FUN AND TRAVEL ADVENTURE WHEN YOU JOIN THE THOUSANDS OF
JAYCO FAMILIES WHO MAKE UP THE . . .

JAYCO JAFARI INTERNATIONAL TRAVEL CLUB

You will find us enjoying the friendship and fellowship of JAFARI CAMPING as we join our
local area FLIGHTS at hundreds of weekend camp-outs all over North America each month . . .

WE'RE THE FAMILIES OF JAYCO!

There are special STATE, REGIONAL and INTERNATIONAL RALLIES where you can join
with your fellow JAFARIANS and their flights to enjoy a special kind of togetherness . . . fun,
games, and entertainment provide memories to last a lifetime.

And . . . how about the exotic surroundings of NEW ORLEANS, the sounds and color of
NASHVILLE and the GRAND OLE OPRY, the roar and rush of the INDIANAPOLIS 500, the
quiet surroundings of the CANADIAN ROCKIES, the color of the SMOKY MOUNTAINS in
the Fall. These and many other adventures can be yours when you join the. . .

JAYCO JAFARI INTERNATIONAL TRAVEL CLUB

Fill in the blanks on the reverse side, cut along dotted line and mail along with a check to:

JAYCO JAFARI INT'L TRAVEL CLUB

ATTN: Membership Coordinator

P.O. Box 192

Osceola, IN 46561-0192

Yes, it's for everyone with a JAYCO RV; young couples just starting out, families spending quality time together, the young at heart expanding their life experiences. Whether you belong to another camping club, have always traveled alone, or are just starting, don't miss out on one of the most priceless benefits of being an RV family . . . meet new friends and spend a bit of your camping life with some of the finest people you will ever have the opportunity to share a campfire or treasure a moment of golden living with a . . . FIFTH-WHEEL TRAVEL TRAILER. . .SPORT UTILITY TRAILER . . . CONVENTIONAL TRAVEL TRAILER . . . TYPE C MOTORHOME . . . FOLDING CAMPING TRAILER . . . it doesn't matter. If you are a JAYCO RV FAMILY, then you are eligible to become a Jayco Jafari Member.

YOU WILL NEVER BE SORRY YOU MADE THE DECISION!

Your membership entitles you to:

- Special international decals for your unit.
- The Hitch newsletter with schedules of upcoming events and activities.
- A membership roster - containing the names and addresses of current members of the club will be sent bi-yearly.
- Discount Cards for several national theme parks including Six Flags and Busch Corp. Parks.
- A special price is available on Wheeler's Campground Guides.
- Discounts with Hertz Rental Car.
- Discounts with Coach Net, an emergency roadside service.
- Farm & City Insurance has RV insurance available at discounted rates to current Jayco Jafari International Club members.
- All of this, plus the joy of meeting new friends and enjoy Jafari adventures around the country.

Start with the first phase of your camping life...just complete the following application and forward it to the Jayco Jafari International Travel Club office. Your membership application may also be completed online, by visiting our website at www.jaycorvclub.com. If you have further questions, contact the club office direct at the website or by calling 800-262-5178. Local calls can be made to 574-258-0571.



WELCOME TO THE JAFARI FAMILY!



TO: Membership Coordinator for the Jayco Jafari International Travel Club

Please enroll us as members in the Jayco Travel Club. We are ready to roll to where the “friends we just haven’t met yet” have the coffee on the fire and are waiting for us to arrive: We are ...

Name: _____ Spouse: _____

Address: _____ Phone: _____

City: _____ State: _____ Zip: _____

Email: _____

Ages of Children at Home: _____

Our JAYCO is a: _____ Our Dealer _____
(type & size)

Membership Dues:

| | | | |
|--------------|---------|---------------------|-------|
| One year | \$25.00 | Amount enclosed. \$ | _____ |
| Two years: | \$45.00 | Check #: | _____ |
| Three years: | \$65.00 | | |

(signature) (date)

TABLE of CONTENTS

I. INTRODUCTION TO RV OWNERSHIP

| | |
|------------------------------------|---|
| A. WELCOME | 1 |
| B. SAFETY CONSIDERATIONS | |
| 1. Safety in Using LP Gas | 2 |
| 2. Electrical System Safety | 2 |
| 3. Additional Safety Tips | 3 |
| C. INSURANCE | 3 |
| D. CONTINUOUS LIVING IN RV's | 4 |

II. WARRANTY & SERVICE

| | |
|----------------------------------|---|
| A. WARRANTY COVERAGE | 5 |
| B. CUSTOMER DELIVERY FORM | 6 |
| C. SERVICE PROCEDURES | |
| 1. Basic Service Procedure | 7 |
| 2. Dealer | 7 |
| 3. Factory | 8 |
| 4. Parts | 8 |
| D. OWNER'S RESPONSIBILITY | 8 |

III. USAGE OF YOUR CAMPER

| | |
|--|----|
| A. LOADING | 9 |
| B. CENTER OF GRAVITY AND WEIGHT INFORMATION .. | 9 |
| C. MOUNTING THE CAMPER | 11 |
| D. CAMPER FASTENERS | 12 |
| E. CAMPER JACKS | 12 |
| F. SET-UP (SPORTSTERS) | |
| 1. Opening Your Jayco Camper | 16 |
| 2. Closing Your Jayco Camper | 16 |
| G. LIFTER SYSTEM (SPORTSTERS) | 17 |
| 1. Limited Warranty (Sportster Only) | 18 |

IV. THE SYSTEMS

| | |
|--|----|
| A. PLUMBING | |
| 1. Sanitizing Potable Water System | 19 |
| 2. Fresh Water System | 19 |
| 3. Tank Supply | 19 |
| 4. City Water Hook-up | 20 |
| 5. Draining the Supply Tank | 20 |
| 6. Draining Waste Water | 20 |

| | |
|--|----|
| B. WINTERIZATION | |
| 1. 950 Hunter | 21 |
| 2. 850 Hunter, Sportster | 21 |
| C. LP GAS | |
| 1. Installation Instructions | 22 |
| 2. Servicing & Filling | 23 |
| 3. Regulator | 24 |
| 4. Checking for Leaks | 24 |
| 5. LP Gas Consumption | 24 |
| 6. LP Gas System Warnings | 25 |
| D. ELECTRICAL | 26 |
| 1. 110 Volt System | 26 |
| 2. Changes, Modifications, and Additions | 27 |
| 3. 12 Volt System | 27 |
| 4. 12 Volt Connections for Pigtail | 28 |

V. APPLIANCES

| | |
|---|----|
| A. CLEANING BRUSHED CHROME | 29 |
| B. STOVE | 29 |
| C. REFRIGERATOR | 30 |
| D. WATER HEATER | 30 |
| E. FURNACE | 31 |

VI. CARE AND MAINTENANCE

| | |
|--|----|
| A. EXTERIOR ALUMINUM | 32 |
| B. FIBERGLASS SIDEWALLS (HUNTER SERIES) | 32 |
| C. ALUMINUM ROOF | 32 |
| D. CUSHIONS | 33 |
| E. DRAPES | 33 |
| F. TENT (SPORTSTER) | 33 |
| 1. Condensation in Tents | 34 |
| G. PANELING | 34 |
| H. FLOOR | 34 |
| I. LIFTER SYSTEM | |
| 1. Lifter Posts | 34 |
| 2. Winch | 35 |
| 3. Cables | 35 |
| 4. Push Rod | 35 |
| J. LP GAS SYSTEM | 35 |
| K. APPLIANCES | 35 |

INTRODUCTION TO RV OWNERSHIP

WELCOME

Welcome to the world of recreational vehicle travel. Your purchase of a Jayco RV allows you to enter this unique world of camping and leisure in a grand style. Your Jayco RV has been designed and engineered to offer you many comforts of home that will make your camping experience as enjoyable as possible.

This owner's manual was prepared to assist you in understanding the proper use and operation of various containment systems, servicing and maintenance of component parts, and explanation of your warranty protection. If you are a newcomer to RV travel, you will especially appreciate the suggestions and "shop talk" information to be found throughout this manual to help you obtain the most pleasure from the use of your vehicle.

We have made every effort to make this manual as accurate as possible in order to reflect information available at time of publication. Products are constantly being improved and we try to upgrade our installations accordingly. You should carefully read and understand this owner's manual which is a supplement to various other instructions supplied by the manufacturers of separately warranted products.

Keep this owner's manual in your recreational vehicle for handy reference. Get to know your new vehicle and how it operates. You should carefully read and understand these instructions and information supplied by manufacturers of separately warranted products, since they contain important operating, safety, and maintenance instructions.

Every effort has been made to provide you with a safe, dependable product. Your vehicle complies with applicable requirements of Federal Motor Vehicle Safety Standards, State Regulations, Canadian Standards Associations (CSA) where applicable, and complies with requirements of ANSI Standard A119.2, the nationally recognized "Standard for Recreational Vehicles - Installation of Plumbing, Heating and Electrical Systems." The Recreational Vehicle Industry Association (RVIA) and Canadian Standards Association (CSA) periodically inspect our production line and assist us in maintaining strict compliance with installation and safety standards for those systems. Your follow-up with periodic safety inspections and a program of preventive maintenance is important for the continuation of safe and trouble-free operation. Happy Camping!

SAFETY CONSIDERATIONS

Safety in Using LP Gas

Even though the Manufacturer and Dealer have already conducted tests for leakage, this check is advisable because of the vibration encountered during travel.

Continued periodic checks of the system are recommended. Your camper was manufactured to provide you with access to all gas line connections. Leaks can be found with a soapy water solution applied to the outside of the gas pipe connections; the soap will bubble at the leak. Do not use products that contain ammonia or chlorine. **NEVER USE FLAME OR LIGHTED MATCHES TO TEST FOR LEAKS.** Leaks can usually be repaired by tightening connections. If not, ask your authorized dealer's service department to make the necessary repairs.

LP gas is heavier than air. Leaking gas tends to flow to low places. It will pocket in a low area. LP gas can usually be detected by an identifiable odor similar to onions or garlic. Never light a match or allow any open flame in the presence of leaking gas. Do not touch electrical switches.

It is very important to have LP gas shut off during refueling. Some states prohibit gas appliance operation during travel, especially in underground tunnels.

Never allow gas containers to be filled above the 80% liquid capacity indicated on the container. If a container is overfilled, liquid gas may flow through the regulator causing erratic operation and danger of fire or explosion. In addition, an overfilled container placed in hot sunlight will expel excess gas through the relief valve and be susceptible to ignition by any nearby open flame or spark.

Electrical System Safety

Circuit breakers and fuses are installed to protect electrical circuits from overloading. Do not replace any circuit breaker or fuse with any other size than what is indicated on the label at the electrical panels. Do not make unauthorized changes to circuitry or install fixed appliances yourself. If you want changes, consult your dealer and he will assist you in obtaining a safe installation.

An approved power supply cord has been supplied with the vehicle. Always use this cord for hook-up to the 120-volt source. Note that the cord has a three pin plug that provides proper grounding through the third (round)

pin. Grounding provides some personal protection from serious electrical shock. Do not use any adapter, cheater, or extension cord that will break the continuity of the grounding circuit connected to that third pin. NEVER remove the grounding pin for convenience of being able to connect to a non-ground (two-prong) receptacle. Use a 120-volt tester to check the polarity and grounding of your power source.

Additional Safety Considerations

1. Be sure you understand your camper, its systems, equipment, and how to operate it safely.
2. Sanitize the fresh water supply system periodically (see the sanitizing instructions in Chapter IV).
3. Keep water connection fittings from coming in contact with the ground or drain hose to reduce the chance of contamination.
4. Enlist the services of a qualified technician to repair gas or electrical appliances.
5. Always keep a serviceable fire extinguisher placed in an easily accessible location. Be familiar with its use. In case of a fire, there will not be time to learn the operation.
6. Please carefully read the loading section in Chapter III to avoid unsafe traveling conditions.
7. Observe all warning labels attached to your vehicle concerning LP gas, water, electricity and loading.
8. Do not leave children, pets, or any person who may require special care unattended in the camper, especially if the unit is closed. Unlike homes, the amount of oxygen is limited. An unsafe condition can occur in a very short period of time, especially during hot weather.
9. Read and follow the maintenance instructions in Chapter VI.
10. Do not enter the camper when it is on jacks. It could fall over, cause personal injury, and damage the camper. Jacks are intended to raise and lower the camper and not for a support method for the camper.
11. Disconnect the TV power cord and antenna lead-in during thunderstorms or lightning.
12. Never mount a trailer hitch to the bumper on the Hunter Series. The bumper is to be used as a step and for sewer hose storage only.
13. For your safety & that of your loved ones, Jayco recommends no one be allowed inside this unit while it is in motion. Check your state law for details.

INSURANCE

As with your automobile, it is important that you protect yourself and others with insurance coverage for personal liability, theft, collision, property damage, etc. . . . Your dealer will assist you in obtaining appropriate insurance for your protection, or you may check with your automobile insurance company.

CONTINUOUS LIVING IN RV's

Your camper was designed and built for use as a recreational vehicle. It was not intended for use as full time living quarters. If you attempt to live in your camper, you should understand, and be prepared for, potential problems.

1. The fresh water and drainage systems are not designed for use in sub-freezing weather.
2. Proper ventilation or the use of a dehumidifier may be needed to reduce condensation. Condensation can be a problem in any dwelling used as living quarters. It is related to the living habits of the people in the dwelling. The more people in a given area, the greater the problem will be. Condensation is the result of warm moist air coming in contact with cool surfaces such as windows, tents, and aluminum framing. Upon contact with these cool surfaces, the warm air loses its ability to hold moisture. Weep holes are provided in the lower threshold of the windows to drain water that condenses on the the panes.
3. Your warranty will not cover many of the problems caused by living in your camper or using it for other than casual, personal recreation.

CHAPTER II

WARRANTY & SERVICE

Limited Warranty



LIMITED WARRANTY

FOLD DOWN CAMPING TRAILERS • TRAVEL TRAILERS • FIFTH WHEEL TRAILERS
TRUCK CAMPERS • MINI-MOTOR HOMES

SUMMARY OF WARRANTY

Jayco, Inc., (Jayco) warrants to the original purchaser (you) of every Jayco unit that all parts of our manufacture are free from substantial defects in material and workmanship for a period of one (1) year from the date of purchase under normal use and service. This warranty does not apply to any defect in the aesthetics or physical appearance of the unit, nor to normal deterioration of the soft trim and appearance items due to wear and exposure.

HOW TO OBTAIN WARRANTY SERVICE

Any part of our manufactured product proven substantially defective in material or workmanship during the warranty period will be repaired free of charge if the part is returned with transportation charges prepaid to an authorized Jayco dealer or Jayco, Inc., with return transportation at your expense. If a factory or authorized service center is not available in your area, call direct to Jayco, Inc., A.C. (219) 825-5861 to arrange prompt and proper repairs to your unit.

EXCLUSIONS

Jayco assumes no responsibility or liability for defects in workmanship or operation of separately warranted products. These products may be warranted by the individual manufacturers and a copy of their warranty has been included in your owner's packet. Separately warranted products will not be serviced, repaired or replaced by Jayco, Inc. If service or parts are required for these products, refer to the furnished list of factory authorized service centers. If the list is not available for the particular product, write or call the manufacturer concerned to obtain the location of the nearest service center.

Jayco does not warrant components manufactured by others, including, but not limited to engine, drive train, transmission, chassis, tires and tubes, ranges, ovens, furnaces, batteries, axles, hubs, bearings, power converters, refrigerators, burners, and trailer brake systems. These parts may or may not be warranted by their manufacturers and Jayco, however, assumes no obligations with regard to them.

This warranty shall not apply to normal maintenance, such as, greasing wheel bearings, tightening lug nuts, etc., that the vehicle will require nor to any damages arising from the failure to have such maintenance performed.

Fabric items such as canvas, canopies, window screenings, vinyl windows, cushion and mattress covers, are not warranted against leakage, tears, punctures, shrinkage, fading or soiling but are warranted only as against defective workmanship and material.

The vehicle is not a cargo trailer and the customer is advised to observe the recommended gross weight limit. COMMERCIAL USE OR RENTALS OF THIS VEHICLE AND ABUSE, NEGLIGENCE, OR OPERATION OVER UNIMPROVED ROADS WILL VOID THIS WARRANTY.

DISCLAIMER OF DAMAGES

YOU AND ANY OTHER USER OF JAYCO PRODUCTS SHALL NOT BE ENTITLED TO ANY CONSEQUENTIAL OR INCIDENTAL DAMAGES, including without limitation, loss of use of the unit, inconvenience, lodging, damage to personal property, lost income or earnings. SOME STATES DO NOT ALLOW THE EXCLUSION OR LIMITATION OF INCIDENTAL OR CONSEQUENTIAL DAMAGES, SO THE ABOVE LIMITATION MAY NOT APPLY TO YOU.

DISCLAIMER AND LIMITATIONS OF IMPLIED WARRANTIES

JAYCO LIMITS ALL IMPLIED WARRANTIES OF FITNESS FOR A PARTICULAR PURPOSE AND MERCHANTABILITY TO THE WARRANTY PERIOD OF ONE YEAR. NO WARRANTIES, EXPRESS OR IMPLIED, EXTEND BEYOND THE WARRANTY PERIOD. NO PERSON HAS AUTHORITY TO EXTEND, ENLARGE, OR MODIFY THIS WARRANTY. NO ACTION TO ENFORCE THIS WARRANTY MAY BE COMMENCED MORE THAN SIX MONTHS AFTER EXPIRATION OF THE WARRANTY PERIOD.

SOME STATES DO NOT ALLOW LIMITATION ON HOW LONG AN IMPLIED WARRANTY LASTS SO THE ABOVE LIMITATION MAY NOT APPLY TO YOU. THIS WARRANTY GIVES YOU SPECIFIC LEGAL RIGHTS, AND MAY ALSO HAVE OTHER RIGHTS WHICH VARY FROM STATE TO STATE.

PARTS AND DESIGN CHANGES

Jayco may make parts and design changes from time to time without notice and repairs or replacements may be made with new or different parts.

WARRANTY REGISTRATIONS

Your warranty registration records should be completed and delivered to the manufacturers of component parts, as they may be a condition of the warranty. THIS JAYCO WARRANTY IS VOID UNLESS YOUR WARRANTY REGISTRATION CARD IS RETURNED TO JAYCO.

JAYCO, Inc. • P.O. BOX 460 • MIDDLEBURY INDIANA 46540 • PHONE (219) 825-5861

Revised 2-1-80

Printed U.S.A.



CUSTOMER DELIVERY FORM

JAYCO, INC.P.O. Box 460
58075 S.R. 13
Middlebury, Indiana 46540
(219) 825 5861

| | | | | | |
|--------------------|---|--------------------|---|------------|---|
| OWNER'S NAME | | DEALER NAME | | | |
| ADDRESS | | ADDRESS | | | |
| CITY | | CITY | | | |
| STATE | | STATE | | | |
| PURCHASE DATE | | TRAILER SERIAL NO. | | | |
| TIRE SERIAL NO. 1 | 2 | 3 | 4 | 5 | 6 |
| CHASSIS SERIAL NO. | | CHASSIS TYPE: | | ENGINE NO. | |

ALL ITEMS MUST BE CHECKED OFF BY DEALER AS LABOR IS PERFORMED

1. Safety precautions explained to owner on L.P.-Gas system. YES ___ NO ___
2. Location of L.P.-Gas connections shown to owner and informed how to make periodic leakage check by use of soapy water. YES ___ NO ___
3. Owner shown how to light and/or operate the following appliances by actual operation of them:

| | Brand | Model No. | Serial No. | YES | NO |
|--------------|-------|-----------|------------|---------|--------|
| Stove | _____ | _____ | _____ | YES ___ | NO ___ |
| Furnace | _____ | _____ | _____ | YES ___ | NO ___ |
| Refrigerator | _____ | _____ | _____ | YES ___ | NO ___ |
| Water Heater | _____ | _____ | _____ | YES ___ | NO ___ |
4. Operation of Electrical System explained and demonstrated. YES ___ NO ___
5. Operation of Fresh Water System including filling of tank. YES ___ NO ___
6. Shown how to operate Drainage System. YES ___ NO ___
7. Care and operation of toilet. YES ___ NO ___
8. Explained winterization of unit. YES ___ NO ___
9. Owner shown how to hook-up and unhook trailer, also removal of dolly wheel for travel. YES ___ NO ___
10. Tire pressure checked and importance explained. YES ___ NO ___
11. Proper parking and setup procedure of unit in preparation for camping explained. YES ___ NO ___
12. Given coach keys and owner's packet. YES ___ NO ___
13. General appearance - no visible damages. (Interior and Exterior) YES ___ NO ___
14. Operation of trailer brakes explained and periodic adjustment required. YES ___ NO ___
15. Check and explain the tightening of lug bolts as in manual. YES ___ NO ___
16. Check and explain importance of Warranty Cards as supplied by manufacturers of appliances and component items. Copy of warranty was made available before purchase. YES ___ NO ___

I certify that I have read and been given a full explanation and demonstration of each item listed above.

Dealer's Signature _____

Customer Signature _____

Person Explaining Above: _____

The purchaser should not sign this statement until all items indicated above have been explained to his satisfaction. The dealer is to return this form within 5 days after delivery of this trailer to Service Department.

GREEN COPY - Dealer WHITE COPY - Customer PINK COPY - Dealer MANILA HARD COPY - Jayco

DO NOT REMOVE this page. Use the regular 3 page forms supplied with each coach.

Some items on this delivery form may not apply to your trailer.

SERVICE PROCEDURES

Basic Service Procedure

We are particularly interested in maintaining good customer relations. Only by having your complete confidence and satisfaction with our product and its service can we assure our continued success as manufacturers of recreational vehicles. We have found that continuing a pleasant and effective relationship through our dealers is equally as important as maintaining the technical excellence of our product. Your authorized dealer will cordially assist you in providing service, maintenance, selection of options, and instructions concerning the operation of your vehicle.

Should you have a problem with service, please follow the below listed steps in this order.

1. Contact your selling dealer's service department for an appointment. Describe to the best of your knowledge the nature of the problem. Please keep appointments to establish a good, workable relationship and proper attitude.
2. Contact the owner or General Manager of the dealership should the initial attempt fail with the service department.
3. Contact the: Customer Service Dept.
Jayco, Inc. • P.O. Box 460
Middlebury, IN 46540 • Phone: (219) 825-5861

Give all the above information as requested along with serial number of the camper. We will make every reasonable attempt to resolve your problem.

Please bear in mind that most problems arise from misunderstandings concerning warranty coverage and service. In most instances you will be referred to dealer level and your problems will be resolved with dealer's facilities and personnel.

Dealer

Your authorized Jayco dealer has inspected and serviced your new Jayco RV unit according to our pre-delivery inspection requirements. He is authorized to service and maintain your coach as need be. All warranty requirements are to be performed by the selling dealer unless Jayco gives prior approval.

Some RV dealers may, at the time of need, be authorized service centers for certain manufacturers of separately warranted products, so it will pay you to check with your dealer first to reduce delays. If the dealer is not an authorized service center for the product in question, he should assist you in obtaining authorized service.

Factory

A factory service department is operated at our Middlebury, Indiana, manufacturing facility. Should your Jayco RV be in need of repairs and your dealer recommends that the factory repair it, it may be returned to our plant for repairs upon following these procedures.

1. Your dealer must make an appointment before returning it to the factory service department.
2. Transportation costs are the responsibility of owner.

| |
|--|
| <p>NOTE: Jayco does not accept collect phone calls.</p> |
|--|

Parts

Parts are available at most Jayco dealerships or your dealer will order parts for you as needed. Should you be unable to find a dealer in your local area, contact our Customer Service Department and we will assist you in providing parts through an authorized dealer.

OWNER'S RESPONSIBILITY

It is the owner's responsibility to properly maintain his/her new Jayco RV and be aware of any possible problems in warranty or otherwise. Negligence is not covered by warranty. Your RV coach should be checked visually before leaving on a camping trip, especially an extended trip. Regular maintenance is important and can save frustration in the event of breakdowns.

If warranty service is needed while traveling, contact our Customer Service Department and you will be directed to proper personnel. To have warranty service provided at a non-Jayco authorized service center, it must have prior approval. Any unauthorized repairs will void the warranty on your Jayco coach.

The return of defective parts is required for warranty coverage if repairs are made at either an authorized or non-authorized service center. The returned parts are subject to approval by Jayco's warranty administrator before reimbursement can be made.

Please keep your owner's manual, service center list for separately warranted products, your copy of "Limited Warranty and Customer Delivery Form," and any other related papers in your camper.

USAGE OF YOUR CAMPER

WARNING: Do not use or enter your camper when it is up on the jacks.

LOADING

Loading gear in your Jayco camper should be handled with serious consideration. ALL cargo should be distributed evenly with the heaviest items stored in the lower cabinets. Be sure that all heavy items are secured to prevent weight shifts while traveling.

The maximum load for overhead cabinets is 35 pounds. Place only lightweight items, such as paper plates, cups, etc., in the overhead cabinet. Please remember that the heaviest strain on the cabinet is during travel.

Observe the capacity rating to avoid risk of injury.

The Hunter Series and the Sportster Series have an optional roof rack. The maximum weight for either roof is 200 pounds, including the air conditioner. Never load anything on the roof that might puncture the roof material. Be careful not to exceed the total cargo capacity of the truck.

Never raise a Sportster roof with cargo on top.

CENTER OF GRAVITY AND WEIGHT INFORMATION

You should always be careful to distribute weight evenly and never overload your truck. To estimate the truck load, add the weight of all passengers in the camper, the weight of supplies, tools and all other cargo, the weight of the camper, and all optional equipment.

Optional Equipment Weights

| | |
|--|----------|
| Jacks (Screw) | 100 lbs. |
| Jack (Hydraulic) | 125 lbs. |
| Furnace | 19 lbs. |
| Refrigerators: (These weights are only the amount that is in excess of the 75 lb. ice box w/ ice.) | |
| Dometic 2190 | 0 lbs. |
| Dometic 2201 | 0 lbs. |
| Dometic 2310 | 0 lbs. |
| Norcold 442 | 0 lbs. |
| Norcold 452 | 20 lbs. |

After you have figured the total truck load, be sure that your truck capacity is sufficient. Load the heaviest items first, near or on the floor. Store only light items in the upper shelves. Distribute the weight evenly from side to side and from front to back to maintain the camper's center of gravity within the truck's center of gravity zone. Be sure all cargo is secure to prevent weight shifts.

When the camper is loaded, drive to a scale and weight the front wheels and rear wheels separately to determine the axle loads. The load on each axle should not exceed its gross axle weight rating (GAWR). The total of both axle loads should not exceed the gross vehicle weight rating (GVWR). These weight ratings are given on the vehicle certification label that is located on the left side of the vehicle, normally the dash panel, hinge pillar, door latch post, or door edge next to the driver. If weight ratings are exceeded, move or remove items to bring all weights below the ratings.

See the camper certification label (located on the camper's rear exterior surface) for the month and year of manufacture and for the Vehicle Identification Number.

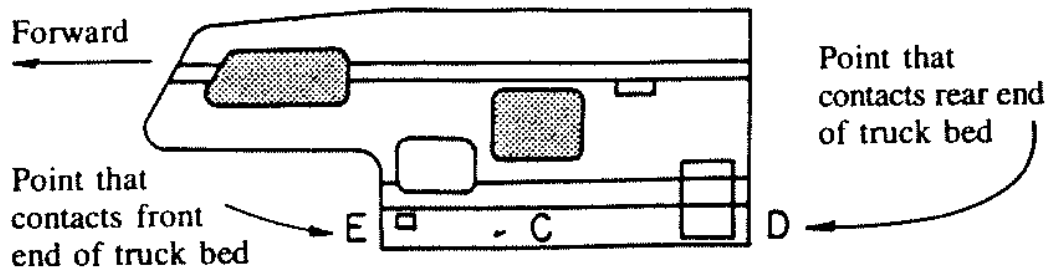
MFG. BY: _____

DATE: _____

THIS CAMPER CONFORMS TO ALL APPLICABLE U.S. FEDERAL MOTOR VEHICLE SAFETY STANDARDS IN EFFECT ON THE DATE OF MANUFACTURE SHOWN ABOVE.

CAMPER WEIGHT IS _____ LBS. MAXIMUM WHEN IT CONTAINS STANDARD EQUIPMENT. _____ GAL. OF WATER, _____ LBS. OF BOTTLED GAS, AND _____ CUBIC FT. REFRIGERATOR (OR ICE BOX WITH _____ LBS. OF ICE, AS APPLICABLE). CONSULT OWNER'S MANUAL (OR DATA SHEET AS APPLICABLE) FOR WEIGHTS OF ADDITIONAL OR OPTIONAL EQUIPMENT. SERIAL NO. _____

MOUNTING THE CAMPER



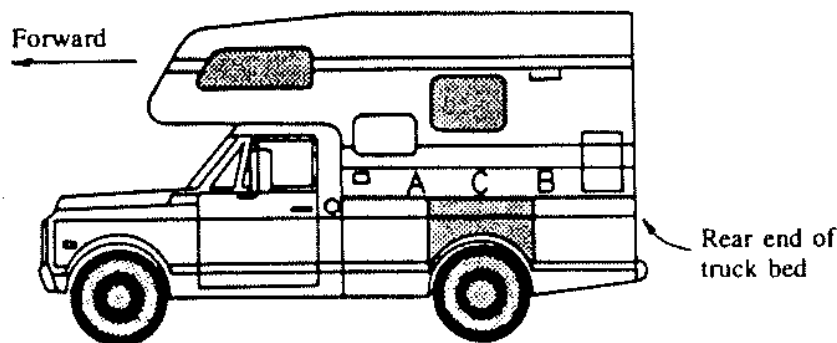
CAMPER CENTER OF GRAVITY UNDER SPECIFIED LOADING CONDITION

| MODEL | DISTANCE D to C | DISTANCE E to C |
|---------------------------|--------------------|--------------------|
| Hunter Series 850 | 66" | 30" |
| Hunter Series 950 | 46 $\frac{1}{4}$ " | 46" |
| Hunter Series 950 ECO | 46 $\frac{1}{4}$ " | 44 $\frac{3}{4}$ " |
| Hunter Series 1150 | 36" | 55" |
| Hunter Series 1150 ECO | 36" | 52" |
| Sportster 7 | 51 $\frac{1}{2}$ " | 30 $\frac{1}{2}$ " |
| Sportster 8 | 58 $\frac{1}{4}$ " | 33 $\frac{3}{4}$ " |
| Sportster 9 $\frac{1}{2}$ | 45" | 47 $\frac{3}{4}$ " |

To locate your camper within the proper truck center of gravity zone:

1. Locate the center of gravity on your camper, Point C.
2. Locate the center of gravity zone from your truck manufacturer's owner's manual. This zone is shown below as the area from A to B.
3. In the properly matched unit, Point C (camper center of gravity) falls within Points A and B (truck center of gravity zone).

This illustration is an example only. The point that contacts the rear end of the truck bed will vary depending on the model and length.



- A - Forward Limit of Truck Center of Gravity Zone
- B - Rearward Limit of Truck Center of Gravity Zone
- C - Camper Center of Gravity

This illustration is an example only. For the specific center of gravity zone of your truck, consult the truck owner's manual and the consumer document supplied with your truck, or contact your truck dealer for more information.

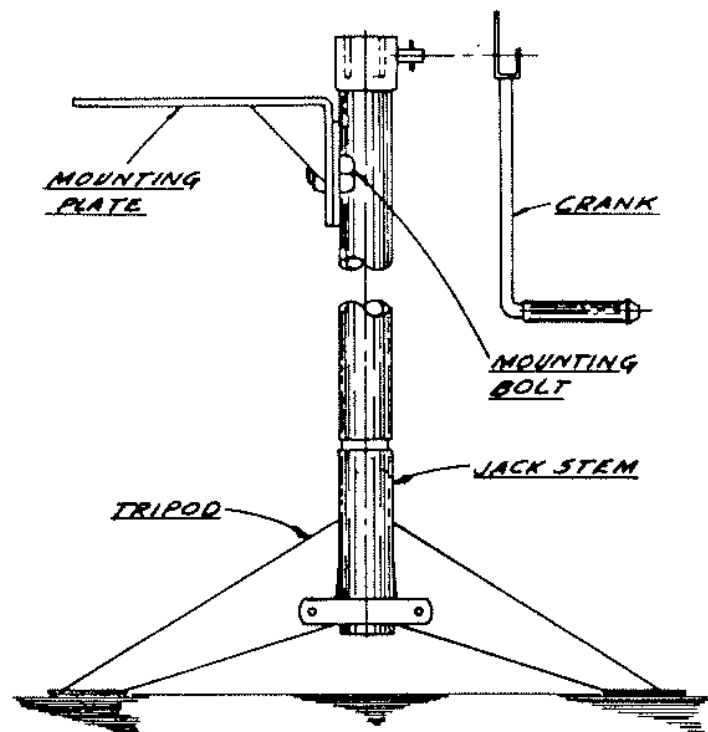
CAMPER FASTENERS

NOTE: Do not over-tighten the tie-downs. This can damage the fasteners and the camper. The weight of the camper will hold it on the truck. The fasteners are to prevent the camper from shifting in the bed of the truck.

There are three types of camper fasteners — stake pocket tie-downs, under-frame brackets, and brackets that attach to the side of the truck bed. The first two types are available from your Jayco dealer. Always follow the instructions that come with your fasteners.

CARE AND USE OF CAMPER JACKS

Camper jacks are built and designed to lift and lower the camper to and from the truck. **DO NOT** use the jacks as a sole means of support while occupying the coach. This is even more important in a camper with three jacks. When only three jacks are used, persons moving to the cabover or right front corner could tip the camper forward, resulting in injury.



**THESE INSTRUCTIONS ARE PROVIDED
BY THE SUPPLIER OF THE JACKS.**

USE

1. Adjust jacks vertical position and insert bottom stem of jack into tripod socket.
2. Firmly tighten mounting bolts. (Crank handle may be used for this operation.)
3. Using crank handle, wind all jacks downward until each jack stem is completely bottomed into tripod socket. It is of utmost importance that the jack stem be bottomed in the tripod socket before the process of lifting the camper is started.
4. After completing the above operations and having all electrical connections between camper and truck free, the lifting operation can be performed.

Each jack should be individually actuated approximately 4 inches at a time until the camper is free of the truck. After the truck has been removed from under the camper, the jacks should be lowered in the same manner as they were raised until the unit is to the lowest position.

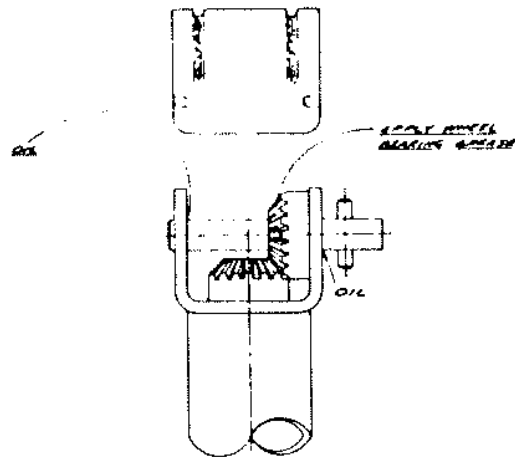
Extreme care should be taken when lowering, as the jacks have built-in stops and if the pressure of winding the jacks is applied against this stop, serious damage may occur to the gears.

Care should be taken when selecting the site of unloading the camper. Although the effective area of the tripod feet is sufficient to support the load of the camper on a softer surface, the use of common sense should prevail.

CARE

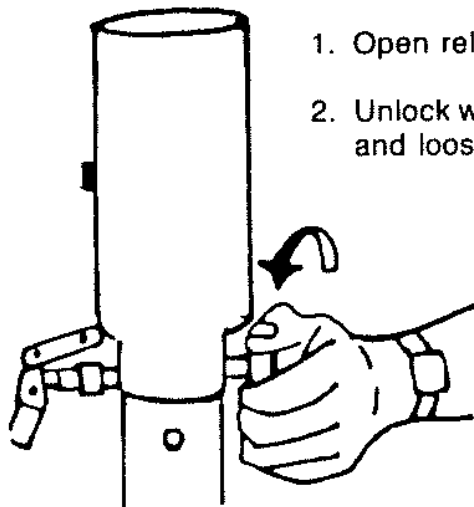
Remove the snap-on gear cover and lubricate the gears with wheel bearing grease.

Apply several drops of oil to the bearing surfaces of the horizontal gear shaft.

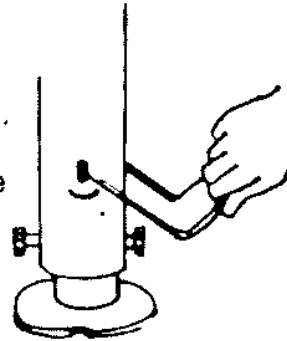


HYDRAULIC CAMPER JACK OPERATING INSTRUCTIONS

How to Prime Jacks



1. Open release valve one turn.
2. Unlock wire bale on foot plate and loosen set screws.

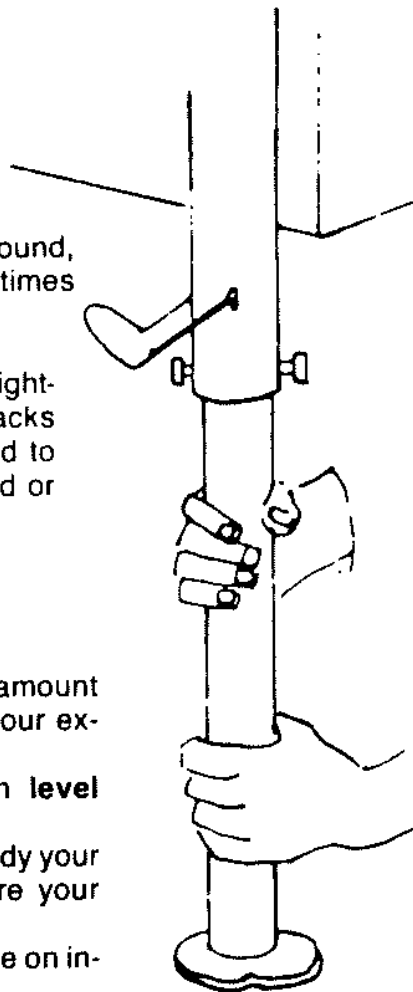


3. Take hold of inner leg and pull down to ground, push leg back up. Do this three or four times to flush complete system.
4. With the foot plate on ground close valve tightly and start to pump. When Hydraulic Jacks have not been used frequently they tend to get sticky inside and need to be primed or flushed in this manner.

RECOMMENDATIONS

VERY IMPORTANT

1. **Do not** load camper on windy day. The amount of wind that is dangerous depends on your exposure, weight of camper, etc.
2. Only unload or store your camper on **level ground**.
3. The jacks are only to load, unload or steady your camper. Never use these jacks to store your camper.
4. **Do Not** extend jack beyond red safety line on inner tube.
5. Inspect and maintain your jacks regularly, especially the bolt under the footplate. If this bolt is not there, replace with a $\frac{5}{16}$ - 24 x $\frac{1}{2}$ HEX HEAD BOLT.
6. Occasionally, when jacks have not been used, the check ball system in the jacks will stick. Follow steps 1 & 2 of **HOW TO PRIME JACKS** on page 1. If this procedure does not work, tap the bolts on each side of the jack with a hammer, just below the black head, several times, followed by steps 1 & 2.



UNLOADING CAMPER

Open Pump valve control $\frac{1}{2}$ to $1\frac{1}{2}$ full turns. **DO NOT OPEN ANY FURTHER.**

Remove safety latch from base pad, and release thumb screws.

Push base pad to ground and be sure pad has solid footing to prevent tipping or sinking.

Repeat same procedure on all four (4) hydraulic jacks.

CAUTION! Again check and inspect that all tie-downs and electrical devices are disconnected from vehicle body.

Close pump valve control, insert pump handle. Now pump handle lever until camper is raised 6" to 8" above truck body.

Repeat same procedure on all four (4) hydraulic units.

Adjust all hydraulic units by additional raising to each unit to compensate for uneven ground surface. Set thumb screws.

DO NOT release hydraulic pressure. Use both hydraulic pressure and thumb screws. Remove truck **SLOWLY**.

TO LOWER CAMPER TO GROUND LEVEL, follow these instructions with **CARE!**

Make sure jack has pressure then release thumb screws.

Open valve control **VERY SLOWLY** and lower one jack 4" to 6". Repeat on each jack until completely lowered. For additional safety use blocks under camper for storage.

When camper is in final resting position, **CLOSE ALL VALVE CONTROLS.**

Remove handle for storage.

LOADING CAMPER

Close pump valves on all hydraulic jacks.

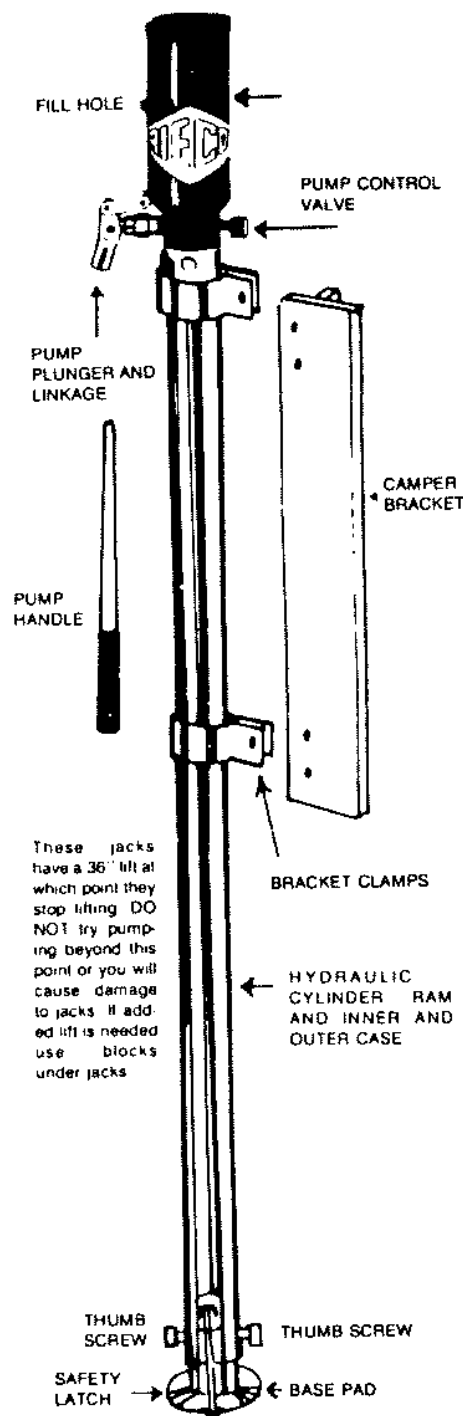
Pump front hydraulic jacks 6" to 8". Pump rear hydraulic jacks 6" to 8" higher than front. Repeat procedure until camper will clear truck body.

CAUTION! When backing truck into camper make sure you are aligned so as not to hit or rub wheel wells.

Lower camper to truck body.

Open pump valves $\frac{1}{2}$ to $1\frac{1}{2}$ full turns. **NO MORE.** Push base pad into notches on base pad and set thumb screws for traveling.

Leave valves open $\frac{1}{8}$ turn.



SET-UP

Opening your Jayco Camper

It is important to park as level as possible for proper operation of the refrigerator, drain system, and lifter mechanism. Be sure to engage your parking brake. You are now ready to set up your tent.

1. Unfasten each corner latch. **CAUTION: NEVER TRY TO CRANK UP THE ROOF UNTIL ALL FOUR CORNER LATCHES ARE UNLOCKED AND FREE.** (Fig. 1)
2. Insert the crank into position and crank in a clockwise direction to raise the roof. (Fig. 2)
3. **DO NOT CRANK TOO HIGH.** Only crank the roof up until the tent is snug. It is possible to go too far and rip the tent loose from mounting extrusions.

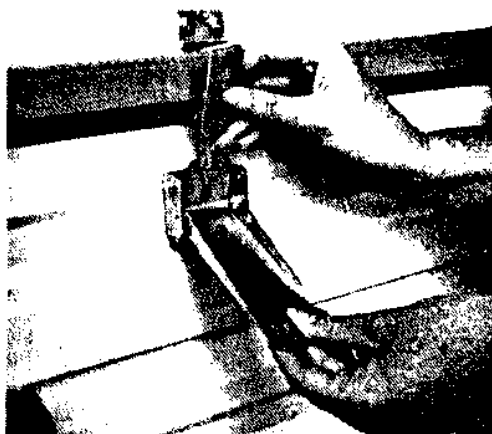


Fig. 1



Fig. 2

Closing Your Jayco Camper

To close, simply reverse the above procedure. It is possible, due to an unlevel campsite, that one corner may "hang up" when you crank down your unit. This is not a serious problem and is due to binding of the lifter arm. To solve this problem, shake the camper gently to move the roof back and forth, allowing it to come down. Never force the hung up corner down by grabbing the roof and applying your weight. This could damage the lifter arm. If the roof is persistent in sticking, crank up again and start over.

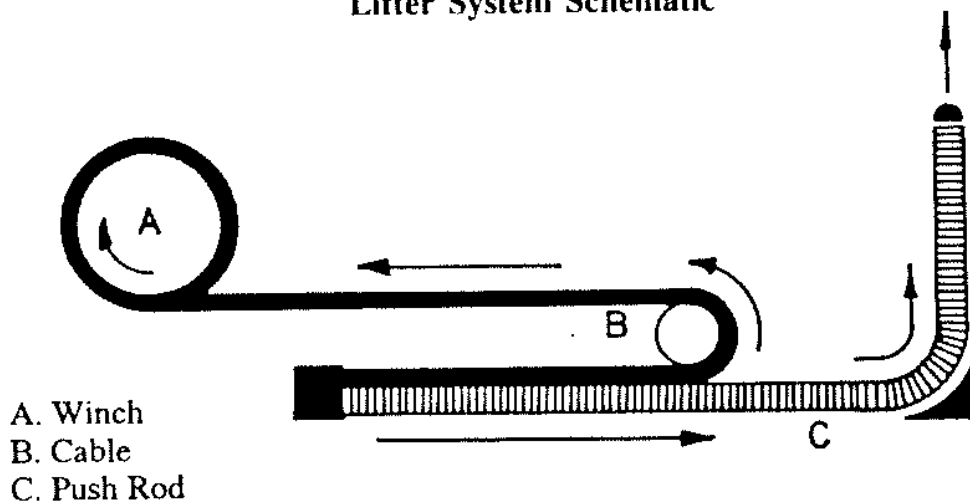
After roof is totally down and roof latches secured, before removing crank, tighten cable system with a slight tension, turning as if you were raising camper. This will avoid cables becoming too loose and becoming tangled with each other.

EASY PATENT #345966 CRANK-UP LIFTER SYSTEM

Jayco's unique raising system has been thoroughly tested and has proven to be one of the best on the market and is relatively simple to operate. The system is operated by a manual winch. As the winch turns, the main cable, which is connected to the four secondary cables from each corner, is shortened. As the main cable shortens, it pulls the secondary cables, forcing the flexible steel core to be pushed upward against the last tier of each telescopic arm. Because strong force can be achieved with little effort through a pulley system, the roof can be lifted easily.

CAUTION: Never attempt to crank roof up with boat or any item on roof.

Lifter System Schematic



As the winch (A) is tightened, it pulls on the cable (B). The cable goes around a pulley, into a tube that contains the lifter push rod (C). The end of the cable is connected to a metal plug. The cable pulls the plug, the plug moves the push rod against the lifter post as it curves up into the wall, pushing the roof up.

Limited Warranty (Sportster Only)



LIMITED WARRANTY

SUMMARY OF WARRANTY

Jayco Inc. (Jayco) extends to the original retail purchaser (Purchaser) a limited warranty on its Jayco lifter system in Jayco recreational vehicles against defects in material or workmanship for the lifetime of the recreational vehicle.

COMPANY'S OBLIGATIONS

If the lifter system is determined to be defective during the warranty term, Jayco will remedy the defect without charge within a reasonable time after receipt of written notice, either by repair or replacement. Warranty service may be obtained from Jayco or its authorized dealers, or persons designated by Jayco dealers. In the event Purchaser has a defective lifter system repaired by an unauthorized service person and said repairs are covered by this Warranty, Jayco shall be liable only for costs of those repairs up to the amount that Jayco would have incurred if Jayco or an authorized dealer had made the repairs. Warranty performance will commence within a reasonable time after Jayco's receipt of written notice of the defect and will be completed within a reasonable time, subject to availability of parts and scheduling.

ITEMS EXCLUDED FROM WARRANTY

This warranty does not cover defects caused by

1. Negligence in operation and maintenance
2. Misuse of lifter system
3. Damage not resulting from defect or malfunction (act of God)
4. Any damage whatever if caused by or related to any alternation Jayco lifter system
5. Claims relating to unauthorized repairs, damage or defects

PURCHASER'S OBLIGATIONS

Purchaser shall give written notice to Jayco at the address set forth herein within a reasonable time after discovery of the defect. The written notice should contain the following information:

1. Name and mailing address of Purchaser
2. Proof of date of purchase
3. Model, year and serial number of the unit
4. Name and address of dealer from whom unit was purchased
5. Description of the defect

All costs incurred by Purchaser in transporting the Jayco lifter system for warranty service shall be borne by Purchaser. No action to enforce this Warranty shall be commenced later than three (3) months after the expiration of the warranty period.

DISCLAIMER OF CONSEQUENTIAL OR INCIDENTAL DAMAGES

Repair or replacement under this Warranty is the exclusive remedy of the Purchaser. JAYCO SHALL NOT BE LIABLE FOR ANY INCIDENTAL OR CONSEQUENTIAL DAMAGES RESULTING FROM ANY DEFECT IN THE JAYCO LIFTER SYSTEM. Some states do not allow the exclusion or limitation of incidental or consequential damages so the above limitation or exclusion may not apply to you.

LIMITATION AND DISCLAIMER OF IMPLIED WARRANTIES

JAYCO EXPRESSLY LIMITS ALL IMPLIED WARRANTIES TO THE WARRANTY PERIOD. JAYCO EXPRESSLY DISCLAIMS WITH RESPECT TO THE JAYCO LIFTER SYSTEM ALL IMPLIED WARRANTIES OF MERCHANTABILITY AND ALL IMPLIED WARRANTIES OF FITNESS FOR A PARTICULAR PURPOSE AFTER EXPIRATION OF THE WARRANTY PERIOD. There is no warranty of any nature made by us beyond that contained in this warranty. No person has authority to enlarge, amend, or modify this warranty.

Some states do not allow limitations on how long an implied warranty lasts so the above limitation may not apply to you. This warranty gives you specific legal rights and you may also have other legal rights which vary from state to state.

PARTS AND DESIGN CHANGES

Jayco may make parts and design changes from time to time without notice and repairs or replacements may be made with new or different parts.

All inquiries regarding this Warranty should be sent to:

JAYCO, INC.
58075 STATE ROAD 13 SOUTH • P.O. BOX 460 • MIDDLEBURY, INDIANA 46540
TELEPHONE (219) 825-5861

Revised 6/10/86

Litho U.S.A.

CHAPTER IV

THE SYSTEMS

PLUMBING

Instructions for Sanitizing Potable Water Systems of Recreational Vehicles

To assure complete sanitation of your potable water system, it is recommended that the following procedures be followed on a new system, one that has not been used for a period of time, or one that may have become contaminated.

1. Prepare a chlorine solution using one gallon of water and $\frac{1}{4}$ cup of Chlorox or Purex household bleach (5% sodium hypochlorite solution). Pour one gallon of solution into tank for each 15 gallons of tank capacity.
2. Complete filling of tank with fresh water. Turn on the water pump. Open each faucet and drain cock until all air has been released from the pipes and entire system is filled.
3. Allow to stand for three hours.
4. Drain and flush with potable fresh water.
5. To remove any excessive chlorine taste or odor which might remain, prepare a solution of one quart vinegar to five gallons water and allow this solution to agitate in tank for several days by vehicle motion.
6. Drain tank and again flush with potable water.

Fresh Water System

Fresh water can be supplied to the system by two methods — direct city water hook-up or from the fresh water supply tank.

Tank Supply

850 Hunter, Sportster (Galley system): After the supply tank is filled, move the pump handle up and down to draw water. Normally this needs to be repeated three to six times before the water starts to flow. Sometimes it may take longer, depending on the length of the supply hose.

950 and 1150 Hunter: This model uses a demand water system composed of standard faucet, water lines, and a 12v pump. The switch is located under the kitchen counter top. When the tank is full, turn on the pump switch. Open the faucet to allow air to escape. If your camper has a water heater, it will fill first and will take longer to purge the air. When the air bubbles disappear, turn off the faucet.

City Water Hook-up

There are two types of city water hook-ups. Some models have the round city water fill pictured in Fig. 3. On other models, there is a combination city water/gravity water fill. Attach a standard garden hose to the city water fill. Purge the air from the water lines as described above.

Draining the Supply Tank

The drain is located on the inside of the camper next to the water tank. Raise the handle straight up and the water will drain.

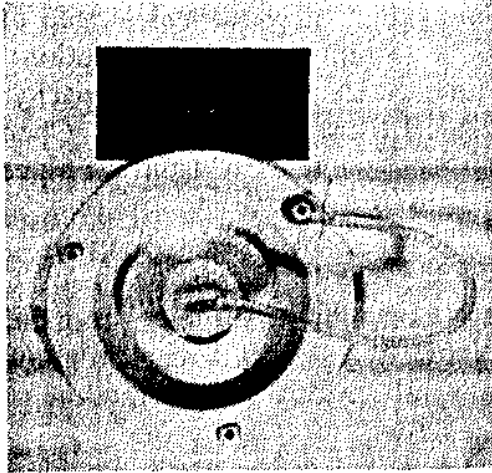


Fig. 3

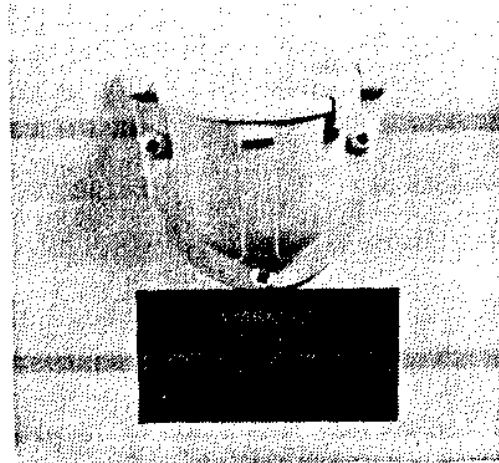


Fig. 4

Draining Waste Water

850 Hunter, Sportster: Remove the drain cap and attach a hose. (See Fig. 5.) Waste water may drain into a container or dumping terminal in some camp grounds.

For the optional toilet and holding tank on the 850 Hunter, a connector with a 3" hose must be installed in the rear of the camper. After all the connections are made, open the valve and drain the waste.

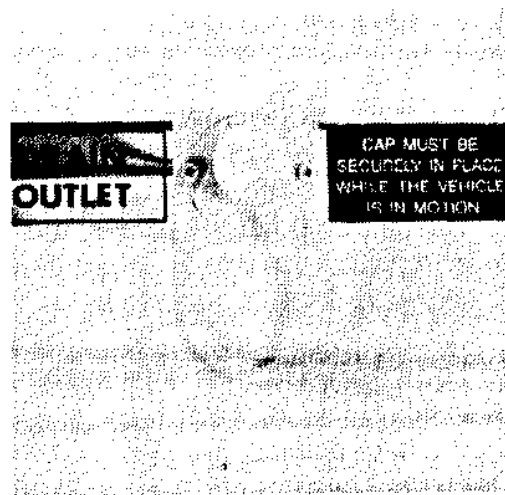


Fig. 5

On the 950 & 1150 Hunter, all waste water from the sinks, shower, and toilet will drain into the holding tank. To drain the holding tank, remove the 3" cap and attach a 3" connector with a 3" hose. Insert the hose into the drain sewer connection. Open the valve and allow it to drain. The termination valve is located below the camper toward the rear, under the shower pan assembly.

WINTERIZATION

850(opt.), 950, 1150 Hunter

1. Drain the water tank.
2. Drain the entire plumbing system.
3. drain the water heater.
4. Drain the holding tank.

There are two methods of winterizing systems after all the water is drained.

1. Using an air compressor and an adapter to attach to the city water connector, blow all the water out of the lines. Place a cup of non-toxic RV antifreeze into each sink drain.
2. Remove the hose from the water pump, on the tank side, and make an adapter to insert into a jug of non-toxic antifreeze. Start the pump and draw antifreeze into the plumbing system.

To avoid the excessive use of antifreeze, bypass the water heater and drain it instead of adding antifreeze. Access may be gained through the metal panel in front of the heater, under the dinette area. The camper must be removed from the truck to gain access to the water heater.

WARNING: Do not use ETHYLENE GLYCOL (Automotive Antifreeze) or METHANOL (Windshield Washer Antifreeze) in Your Fresh Water System because they are harmful and may be FATAL IF SWALLOWED.

850 Hunter (std.), Sportster

1. Drain the tank entirely. The remaining small quantity of water in a plastic tank will not damage the tank by freezing.
2. Be sure that all water has been drained from the hand pump. You do not need to put any antifreeze into the pump.
3. Put a small quantity of non-toxic antifreeze into the sink drain.

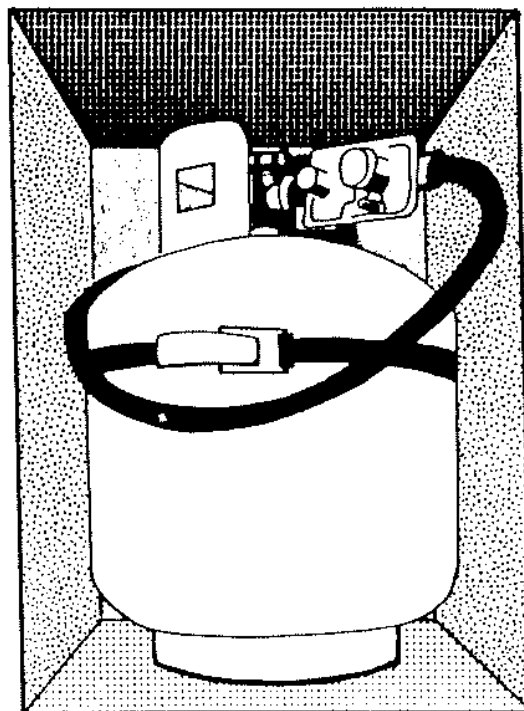
LP GAS SYSTEM

LP gas (liquid petroleum) is composed of various hydrocarbons such as propane, propylene, butanes, butylenes, or a mixture of them. In its gaseous form (vaporized) it is colorless and carries an added garlic-like odor for detection. It is potentially lethal to inhale. LP gas is compressed into liquid for storage and transportation. Propane will liquify in extreme cold (-40°F.).

NOTE: Butane will liquify at 31°F. , and should never be used in cold climates. Furnaces and other appliances will not operate on butane when the temperature drops below 31°F. Consult the Owner's Manuals for your appliances.

WARNING: The LP Gas System must be carefully maintained and all safety rules observed.

Sportster & Hunter 850



Installation Instructions

1. Secure the LP tank with the metal strap in the compartment.
2. Attach the regulator and hose assembly to the tank and gas manifold.

The Regulator must be installed with the vent facing down, as in the illustration on page 22.

The LP gas tank mounted on your vehicle contains LP fuel in liquid form under high pressure. As fuel is used, vapor passes from the outlet of the tank through a dual-stage regulator which reduces the pressure to about 6¼ ounces per square inch or 11 inches water column. Vapor at the low pressure is then transferred through the gas distribution lines. You must keep the regulator clean and dry or it may allow high-pressure gas to pass through it.

Servicing and Filling LP Tank

Do not fill the LP container to more than 80% of capacity.

Over filling the LP tank can result in uncontrolled gas flow which can cause a fire or explosion. A properly filled container will contain approximately 80% of its volume as liquid LP gas.

CAUTION: Never smoke during filling of LP tanks. Extinguish all gas pilot lights before filling the tank. (Required by law in some states.)

Sometimes when an LP tank gets low, there is a concentration of garlic-like odor which may be mistaken for a gas leak when gas is being burned. After filling the tank, the odor soon disappears.

A relief valve is incorporated on all tanks for safety. This valve is normally opened during filling and will indicate when the tank is filled to the proper limit by appearance of liquid replacing vapor. At all other times, the overfill valve should be tightly closed by hand only.

The main valve on the LP tank should also be tightened by hand only. Do not over tighten it. The valve is designed to close with a reasonable amount of tightening. Continual over tightening will eventually damage the valve and it will have to be replaced.

When LP gas tanks are filled to the proper level there is space available for expansion of the vapor. If the tank becomes over filled and is not allowed to bleed off, it may gain pressure from exposure to heat and will blow-off pressure from the relief valve. This can be detected by the strong odor around the tank. Keep open flames away from the area. Take the tank to a safe area and bleed off the excess pressure by opening the valve and closing it when enough has been discharged.

Over filled tanks (more than 80% of liquid capacity) can cause regulator and appliance malfunctions resulting in fire or explosion.

Regulator

It is essential that any regulator adjustments be made by an authorized RV service technician. It requires special equipment. Even a small amount of pressure over or under the recommended setting can cause damage to appliances and regulators. **Never try to reset the gas regulator yourself.**

Checking for Leaks

Upon delivery, and periodically thereafter, check your gas system for possible leaks. The entire distribution system and appliances have undergone factory testing for leaks. However, with normal use and road vibrations, connections and fittings can loosen, causing leaks to develop.

If you smell gas, turn off all open flames immediately, do not touch electrical switches, and begin a systematic search for leaks throughout the gas system. Use soapy water — **never a match** — on connections and fittings. Never use a soap solution that contains ammonia or chlorine. Bubbles will appear at the leak. When you tighten the connection, use two wrenches with opposing torque to avoid twisting the copper tubing. If the leak does not show up in the manifold or copper tubes, turn off the main valve at the tank and have the system checked by a qualified RV service technician.

LP Gas Consumption

Most gas appliances only operate intermittently. Furnace consumption, though, can be very high during freezing weather and high winds. LP gas consumption depends on the use of appliances and the length of time operated. Each gallon of LP gas produces about 91,500 BTU's of heat energy.

Following is a list of typical appliance consumption when turned fully on for one hour of operation.

| Appliance | Average BTU Consumption Per Hour |
|--------------------------|-------------------------------------|
| Stove: Burner Top - Each | 5,200 |
| Oven Burner - Each | 7,100 |
| Heater (Opt.) | 12,000 - 16,000 |
| Refrigerator: RM2190 | 565 |
| RM2201 | 600 |
| RM2310 | 1,000 |
| 442 | 900 |
| 452 | 1,200 |
| Water Heater | 9,000 |

NOTE: The above is an example of a typical system and may not represent the exact system in your camper.

LP Gas System

1. **WARNING:** LP Gas containers shall not be placed or stored inside the vehicle. LP Gas containers are equipped with safety devices which relieve excess pressure by discharging gas into the atmosphere.
2. **WARNING: IT IS NOT SAFE TO USE COOKING APPLIANCES FOR COMFORT HEATING.** Cooking appliances need fresh air for safe operation. Before operation:
 1. Open overhead vent or turn on exhaust fan, and,
 2. Open window.

This warning label has been located in the cooking area to remind you to provide an adequate amount of fresh air for combustion. Unlike homes, the amount of oxygen supply is limited due to the size of the recreational vehicle, and proper ventilation when using the cooking appliance(s) will avoid danger of asphyxiation. It is especially important that cooking appliances not be used for comfort heating, as the danger of asphyxiation is greater when the appliance is used for long periods of time.
3. **WARNING:** Portable fuel-burning equipment, including wood and charcoal grills and stoves, shall not be used inside the recreational vehicle. The use of this equipment inside the recreational vehicle may cause fires or asphyxiation.
4. **WARNING:** Do not bring or store LP Gas containers, gasoline or other flammable liquids inside the recreational vehicle. Disregarding this warning may result in fires or explosions.

5. The following label has been placed in the vehicle near the range area:

IF YOU SMELL GAS:

1. Extinguish any open flames, pilot lights, and all smoking materials.
2. Do not touch electrical switches.
3. Shut off the gas supply at the tank valve(s) or gas supply connection.
4. Open doors and other ventilating openings.
5. Leave area until odor clears.
6. Have the gas system checked and leakage source corrected before using again.

ELECTRICAL SYSTEM

Your electrical system was designed and installed in accordance with the requirements of N.F.P.A.-70, the National Electrical Code, and/or the Canadian Standard Association. Your camper is equipped with a load center that includes (1) 110 volt circuit breaker, (2) converter that transforms 110v AC current into 12v DC, (3) 12v fuses, and (4) on some converters, a low amperage battery charger.

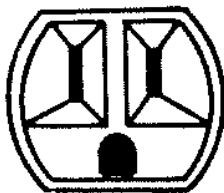
110 Volt System

A 110v power supply cord is permanently attached to the load center. Avoid coiling the cord while in use. For safety, and to avoid damage to appliances, you should check the polarity of 110v receptacles before you plug in the power cord. Using a "cheater plug" adapter to plug into a receptacle that was not designed for your power cord can be dangerous.

WARNING: Using a 110v appliance such as an electric skillet or electric heater can cause an adapter to get hot, melt, develop a short circuit, and start a fire.

For safety, be sure the round ground pin on the power cord is intact. The ground wire is there to reduce the chance of electrical shock. Use only a receptacle that is grounded. Most hardware stores and electrical stores sell plug-in testers for polarity and grounding.

15 amp



20 amp



30 amp



Changes, Modifications, and Additions

Any changes or additions made after delivery may be hazardous. Be sure to consult your dealer. Only qualified **RV electricians** should make changes or additions to your electrical system.

WARNING: Do not replace circuit breakers or fuses with any rated at a higher amperage. Over fusing may cause a fire by overheating the wire or the power cord.

Extension cords used to connect your camper to a receptacle should be rated equal to, or higher than, the power supply cord. They should be a minimum of 14-3 for the 15-amp power cord, and 10-3 for the 30-amp power cord. (A Sportster Series with the optional prewiring for an air conditioner will have a 30-amp power cord.) If you try to pull more amperage through a cord than it was designed for, the cord can overheat and short circuit, and may cause a fire. If you must use an extension cord, be sure to use one that is suitable for outside use. Avoid coiling the extension cord while in use.

12 Volt System

The interior lights are 12v. They can be powered by the converter, the automotive battery, or an auxiliary battery in the truck. For details on your converter, consult the separate converter manual.

The connector between the truck and camper may build up corrosion over a period of time and should be cleaned occasionally to insure good electrical contact.

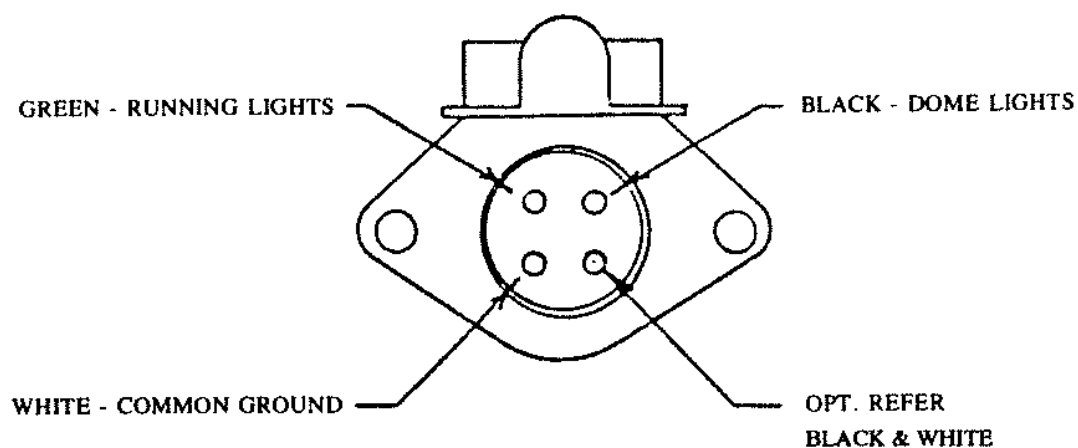
Replacement 12v light bulbs can be purchased at most automotive service shops.

CAUTION: Be sure to turn off all interior lights before folding down Sportster Series truck campers for transit. The lights may cause a fire hazard and burn holes in the tent.

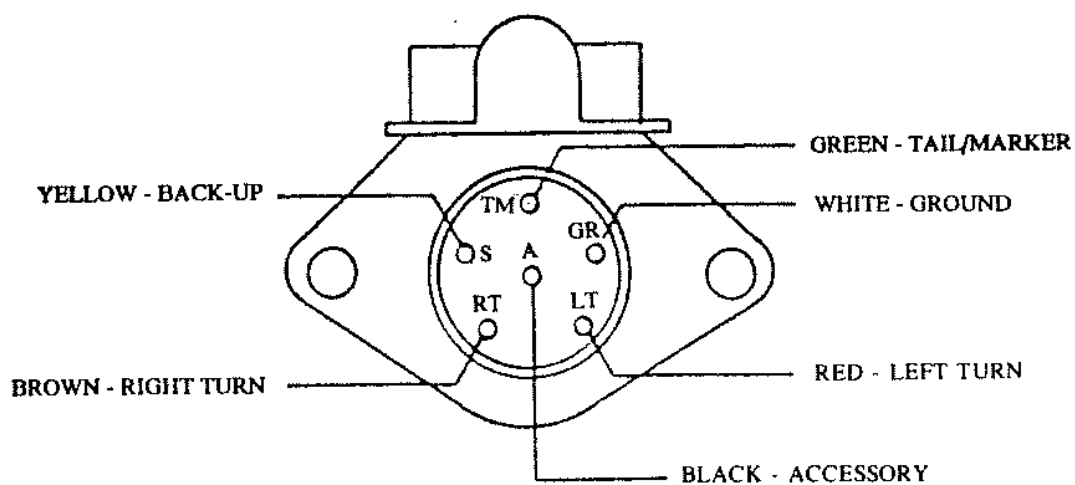
| | |
|----------------------------|------|
| Light Bulb Sizes: Interior | 1141 |
| Porch Light | 1003 |
| Running Lights | 194 |
| Tail Lights | 1175 |

12 Volt Connections for Pigtail to Truck:

Sportster 7' & 8'



Sportster 9½' Hunter 850, 950 & 1150



CHAPTER V

APPLIANCES

The appliances in your camper are quality name brand products. They are rated at current code and standard requirements. All gas appliances are designed to operate on LP gas only — **NOT NATURAL GAS.**

NOTE: The appliances in this camper are not designed to operate on natural gas. Using natural gas may result in fire or explosion.

Each appliance has its own manual and operating instructions supplied by its manufacturer. Some manuals specify limits on the percentage of butane that is allowable in the LP Gas.

CLEANING OF BRUSHED CHROME

After each use, light splattering and fingerprints can be wiped off with a paper towel. Periodically, clean chrome surfaces with mild soap and water. Wipe dry with a soft cloth and apply a light coat of non-toxic oil such as Johnson's Baby Oil or vegetable oil.

Normal cooking vapors will condense on the range hood vent and backguard, leaving a brownish deposit. This should be cleaned off after each use with soap and water. If the deposits are allowed to accumulate, a hard stain will develop, will be difficult to remove, and may damage the finish.

The pilot light for the top burners of the stove will cause red deposits to build up on the underside of the range top. This will not affect the life of the top.

DO NOT use steel wool, ammonia, acids, or abrasives on finished chrome surfaces. These abrasive cleaners may damage the surface permanently.

STOVE

Your stove is designed for LP Gas and must never be hooked up to natural gas. **NEVER USE THE STOVE FOR COMFORT HEATING.** It will cause excessive condensation and possible buildup of deadly gasses.

To light the top burners, hold a match to the burner and turn on the valve. It may take a while for the air to bleed out of the line.

The oven control knob features a "PILOT OFF" position. To light the oven:

1. Push the knob in and turn left to the "PILOT ON" position.
2. Light the pilot under the broiler pan.
3. Turn the knob to the desired heat. The secondary pilot will come on, heating a small thermocouple, which will allow the safety valve to open and send gas to the burner tube. Allow 30 to 40 seconds for the main burner to come on.

Whenever you move your camper, **always** be sure to turn the control knobs to the "OFF" position. This should be done for safety and to conserve fuel.

CAUTION: Whenever using a gas appliance, be sure there is fresh air for ventilation.

REFRIGERATOR (Optional in some models)

Sportster - All 3 available refrigerators have 12 volt capabilities. You should always use 12V power for travel only as some states do not allow L.P. Gas operation during travel.

Hunter - 12V power is optional and may not be in your camper.

While camping always use 110V power or L.P. Gas for most efficient energy. Please read Owner's instructions as supplied with each type of refrigerator. **NEVER** fill fuel tanks with L.P. pilot lites lit for safety reasons.

WATER HEATER (May be optional)

CAUTION: Before lighting or turning on the water heater, be sure the water heater and plumbing lines are full of water. Open all the faucets until a steady stream flows from each. You can destroy a water heater by operating it while empty.

When the water heats, it expands. Due to the closed nature of an RV plumbing system, the excess pressure has nowhere to go except out through the pressure relief valve on the outside of the water heater. It is normal for water to come out of this valve during initial heating; this does not indicate a defect.

Please consult your water heater Owner's Manual for complete operating and maintenance instructions.

FURNACE (May be optional)

When lighting your furnace for the first time, it may take a few tries before the air is purged from the LP Gas line. Turn the thermostate down, wait for the blower to stop, and try it again. Be sure the manual gas valve at the side of the furnace is open. Consult your furnace Owner's Manual for complete instructions.

CAUTION: The furnace compartment has been built to meet codes and standards requirements. The space around the furnace is not intended for storage. DO NOT STORE ANYTHING IN THIS COMPARTMENT OR IT MAY BURN.

CARE AND MAINTENANCE

EXTERIOR ALUMINUM - Sportster Series

The Sportster aluminum siding has a polyester automotive paint finish. This may be cleaned and waxed as you would your car. There is a variety of products made specifically for cleaning the dark streaks that commonly form on RV's. You can also use Lemon Pledge, Endust, and Amway's Dri Fab. Some areas seem to have more of a problem with these streaks than others, and may be related to the acidity of rain water. If you keep your camper waxed, it will be much easier to clean.

FIBERGLASS SIDEWALLS-Hunter Series

Fiberglass walls are very durable and are easy to maintain. To keep them looking nice, you should wax and buff them once a year. Lemon Pledge works well for cleaning fiberglass walls. Scratches and chips can be repaired by an experienced fiberglass repair shop. Any major damage should be repaired as soon as possible to keep cracks from spreading.

ALUMINUM ROOF

The roof on your camper needs little maintenance. However, the seams should be examined once a year to ensure a good seal. If you notice any deterioration in the seal, scrape off any loose sealant and reseal the area. Do not use silicone sealant. It will not adhere well. We recommend the use of SIKAFLEX for Sportster roofs, and ACRYL-R for the Hunter Series. Your dealer can order them for you. Be sure to clean surfaces that are to be sealed, following the instructions on the sealant label.

All seams, roof and sidewalls, doors, windows, and lights should be inspected for proper sealing once a year. Where necessary, apply a bead of SIKAFLEX or (on Hunter Series roofs) ACRYL-R sealant.

CUSHIONS

| |
|----------------------------------|
| CAUTION: DO NOT DRY CLEAN |
|----------------------------------|

If the cushions are dry cleaned, the vinyl on the reverse side of the cushion will shrink, become hard, and crack.

| |
|-----------------------------|
| DO NOT REMOVE COVERS |
|-----------------------------|

If covers are removed it may be difficult to reinstall covers due to possible shrinking.

To clean your cushion and bed mat covers, it is recommended that you frequently vacuum or lightly brush to remove dust and grime for prevention of overall soiling.

Spot clean using the foam only from a water-based cleaning agent such as a mild detergent. Apply foam with a soft brush in a circular motion. Vacuum when dry. Pretest a small area before proceeding. Use a professional cleaning service when an overall soiled condition has been reached.

DRAPES

The fabrics used throughout your new Jayco truck camper add the final touches of decor. Follow the instructions to maintain the rich beauty they offer.

Your drapes are 60% Rayon and 40% Polyester. We recommend that you dry clean the drapes to keep them looking crisp and new.

TENT - Sportster

The Sportster tent is 100% polyester. To clean it, use a mild detergent. The primary cause of damaged tents is mildew. **NEVER** store your tent when it is wet. If the camper must be closed while damp, allow the tent to dry within 24 hours to avoid mildew.

It is normal for the tent seams to leak slightly the first time or two they get wet. Once the threads swell from the moisture, this leakage should stop. It would be a good idea to hose down your Sportster and let it dry before your first camping trip. If a leak persists, you can obtain a seam sealer from your dealer or a sporting goods store.

CAUTION: Always be sure the tent is completely dry before storing. Mildew can start within 24 to 48 hours after closing the camper while wet.

Condensation in Tents

Condensation can be a problem in tent campers if proper ventilation is not used. It is recommended that you leave a small opening in each bunk zipper to permit air to flow through and allow the tent to "breathe." This will help eliminate moisture gathering above the bunk area.

Condensation can be a problem whether a heater is used or not.

PANELING

The wall paneling in your new Jayco is a vinyl covered wood panel. If deep scratches occur, they can be covered by using a thin film of shoe polish or stain, followed by a coating of furniture wax. There are putty sticks available to cover scratches.

To clean, use a mild solution of soap and lukewarm water with a soft sponge or cloth. Refrain from the use of abrasive cleaners. It could cause the vinyl to scratch and turn dull. Grease spots and stubborn dirt can be cleaned off with an all-purpose spray cleaner.

FLOOR

To care for the decorative cushioned linoleum floor covering, wash and wax as you would in your home.

Avoid excessive application of water on new floor as it may cause lifting and curling of the tile. It is best to establish a good coating of wax around the edges.

LIFTER SYSTEM

Lifter Posts

Your telescoping posts should be lubricated twice a year with a light coat of silicone spray or Amway's Dri-Fab. Avoid getting the spray on the tent. **DO NOT** use grease, oil, or WD-40. These will attract dirt and get the tent dirty.

Winch

Once a year grease the gears, reel shaft, and handle threads. An occasional drop of oil on the drive shaft bearings is also recommended. **DO NOT oil or grease the brake mechanism.** See the separate instruction sheet for the winch parts break-down. Access may be gained by removing the wood cover in the left rear corner under the kitchen assembly.

Cables

Pulleys and cables need no lubricant at any time.

Push Rod

We suggest you grease the flexible push rod in each corner once every three years.

LP Gas System

At the beginning of each season:

1. Inspect all gas lines for crimps and damage.
2. Check all lines and connections for leakage with soapy water or leak detector. Do not use products that contain ammonia or chlorine.
3. We recommend that you have the regulator checked and adjusted to proper pressure each year by a qualified RV service technician.

Do not smoke while changing LP bottles or any lines.

Do not allow any LP connection to be loose.

APPLIANCES

Clean brushed chrome with a mild soap and water mixture, wipe dry with a soft cloth. Apply a light coat of Johnson's Baby Oil or vegetable oil once a year to prevent rust. **Do not use steel wool, ammonia, acids, or abrasives on chrome surfaces.**

Various items on these appliances, such as burner orifices, need to be cleaned periodically. See the Owner's Manuals for each appliance for directions or see your dealer.

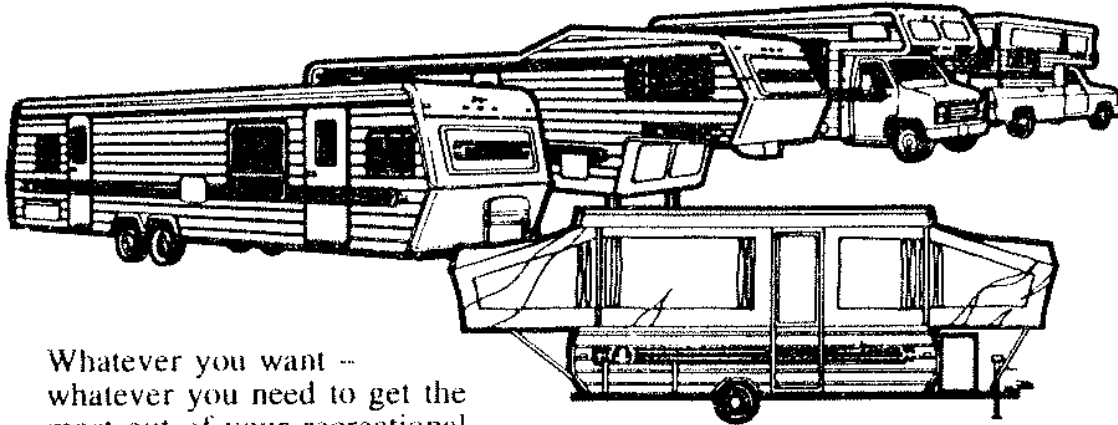
On any appliance with porcelain covering, use caution to avoid chipping. Be careful not to drop items on porcelain surfaces.

NOTES

NOTES

NOTES

Jayco has an RV just for you!



Whatever you want --
whatever you need to get the
most out of your recreational
time, Jayco has an RV to
meet your requirements: fold-
downs, truck campers, travel
trailers, fifth wheels, mini
motorhomes. In a variety of
sizes and prices. They're all
beautifully designed, ruggedly
built, and loaded with
features that let you live life
to the fullest. Visit us today and
we'll show you what we mean.



Incorporated, 58075 S.R. 13 South, P.O. Box 460
Middlebury, Indiana 46540