

## 9500E

### (12 VDC) Power Case/Cassette Awning

### Model 231(LL)(CC).003(#)

INTRODUCTION .....	2
IMPORTANT SAFETY INSTRUCTIONS AND DOCUMENT SYMBOLS.....	2
OPERATION .....	3
A. Opening And Closing The Awning .....	3
B. Programming The Remote Control.....	4
C. Programming The Vibration Sensor .....	5
D. Resetting The Receiver .....	6
E. Testing The Awning Before Travel.....	6
F. Closing The Awning Using An Auxiliary Power Method.....	7
G. Closing The Awning Manually .....	8
H. Understanding The Water Shed Feature .....	9
ADJUSTMENTS.....	9
A. Adjusting The Vibration Sensor .....	9
B. Adjusting The Awning Open/Close Limits .....	10
MAINTENANCE.....	10
A. Changing The Batteries In The Remote .....	11
B. Changing The Batteries In The Vibration Sensor .....	11
C. Maintaining The Hardware .....	11
D. Maintaining The Fabric .....	12
TROUBLESHOOTING .....	13
A. Awning Motor And Remote .....	13
B. Vibration Sensor.....	14
WARRANTY .....	15



**Read these instructions carefully. These instructions MUST stay with this product.**

#### REVISION B

Form No. 3316982.000 1/18  
(French 3316984.000\_B)  
©2018 Dometic Corporation  
LaGrange, IN 46761

#### USA & CANADA

SERVICE OFFICE  
Dometic Corporation  
1120 North Main Street  
Elkhart, IN 46514

#### SERVICE CENTER & DEALER LOCATIONS

**Visit:**  
[www.eDometic.com](http://www.eDometic.com)

# INTRODUCTION

This cassette awning (hereinafter referred to as “awning,” or “product”) is designed and intended for use on a Recreational Vehicle (hereinafter referred to as “RV”) with straight sides. It is especially well-suited for RVs with an over-cab extension where there is not sufficient surface for a bottom mounting bracket. Use these instructions to ensure the correct operation of the product.

Dometic Corporation reserves the right to modify appearances and specifications without notice.

## IMPORTANT SAFETY INSTRUCTIONS AND DOCUMENT SYMBOLS

This manual has safety information and instructions to help you eliminate or reduce the risk of accidents and injuries.

### A. Recognize Safety Information



This is the safety alert symbol. It is used to alert you to potential physical injury hazards. Obey all safety messages that follow this symbol to avoid possible injury or death.

### B. Understand Signal Words

A signal word will identify safety messages and property damage messages, and will indicate the degree or level of hazard seriousness.

**WARNING** indicates a hazardous situation that, if **NOT** avoided, could result in death or serious injury.

**CAUTION** indicates a hazardous situation that, if **NOT** avoided, could result in minor or moderate injury.

**NOTICE** is used to address practices **NOT** related to physical injury.



Indicates additional information that is not related to physical injury.

### C. Supplemental Directives



Read and follow all safety information and instructions to avoid possible injury or death.

Read and understand these instructions before use and maintenance of this product.

Incorrect operation and maintenance of this product can lead to serious injury.

The installation **MUST** comply with all applicable local or national codes, including the latest edition of the following standards:

#### U.S.A.

- ANSI/NFPA70, National Electrical Code (NEC)
- ANSI/NFPA 1192, Recreational Vehicles Code

#### CANADA

- CSA C22.1, Parts I & II, Canadian Electrical Code
- CSA Z240 RV Series, Recreational Vehicles

### D. General Safety Messages

**WARNING** Failure to obey the following warnings could result in death or serious injury:

- This product **MUST** be serviced by a qualified service technician.
- Do **NOT** modify this product in any way. Modification can be extremely hazardous.
- Frequently examine product for imbalance (uneven fit, sagging, loose parts), and for signs of wear or damage to wiring (if applicable) and other critical parts. Do **NOT** use product if adjustments or repairs are necessary.



Critical parts may include awning fabric, cables, arm assemblies, etc.

- Disconnect product from power supply (if applicable), and do **NOT** operate product when maintenance (such as window cleaning) is being carried out in the vicinity.
- Do **NOT** allow anyone (including children) with reduced physical, sensory or mental capabilities, or lack of experience and knowledge to use this product, unless they have been given supervision or instruction (concerning use of this product) by a person responsible for their safety.
- Do **NOT** allow children to play with product or with fixed controls (if applicable).
- Keep remote controls (if applicable) away from children.
- Do **NOT** add any devices or accessories to this product except those specifically authorized in writing by Dometic Corporation.

# IMPORTANT SAFETY INSTRUCTIONS AND DOCUMENT SYMBOLS

**⚠ WARNING** IMPACT OR CRUSH HAZARD. **NEVER** leave an open awning unattended. Keep awning stowed (closed) when snow, heavy rain, wind, and severe weather conditions are expected.

- IMPACT OR CRUSH HAZARD. Do **NOT** allow water to pool, snow to accumulate, or heavy debris on awning fabric. Do **NOT** hang or place anything on awning. The awning will become unstable, and could bend or collapse.
- FIRE HAZARD. Keep sources of heat and fire (barbecue grills, portable heater, etc.) away from awning.

**⚠ CAUTION** Failure to obey the following cautions could result in injury:

- PINCH HAZARD. Maintain a horizontal distance of at least 16" between fully open awning and any permanent object.

**i** Do **NOT** face awning toward permanent objects that may interfere with awning operation.

- PINCH HAZARD. Keep **CLEAR** of arm assemblies while awning is open. If awning is equipped with a vibration sensor, arm assemblies will automatically close against back rail during windy conditions.

**NOTICE** This product is for use with 12 VDC only.

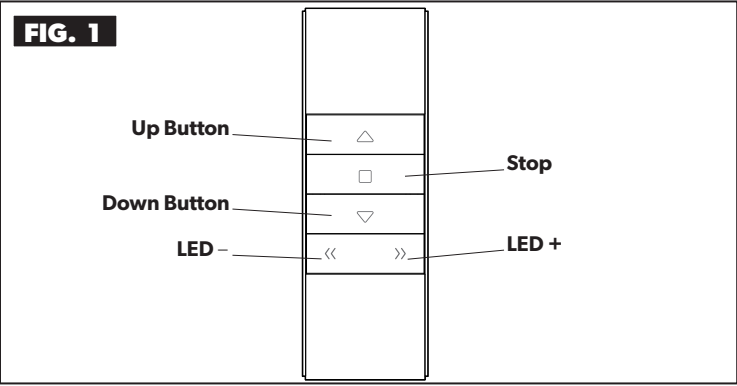
## OPERATION

### A. Opening And Closing The Awning

**⚠ WARNING** PINCH HAZARD. Keep CLEAR of arm assemblies while closing awning. Arm assemblies will close against back rail. Failure to obey this warning could result in death or serious injury.

**⚠ CAUTION** PINCH HAZARD. Maintain a horizontal distance of at least 16" between fully open awning and any permanent object. Failure to obey this caution could result in injury.

**NOTICE** Do **NOT** allow awning fabric to rest on rafters. Wind will cause awning fabric to rub against arm assemblies which could result in premature wear and abrasions.



BUTTON	FUNCTION
Up	Retracts the awning (one touch)
Stop	Stops the awning at an intermediate position
Down	Extends the awning (one touch)
LED -	Dims LED light(s)
LED +	Brightens LED light(s)

**i** If the awning does **NOT** perform as indicated or fabric edges are sagging when extended, refer to "Troubleshooting" on page 14.

- Press the UP and DOWN awning remote buttons to retract and extend the awning.

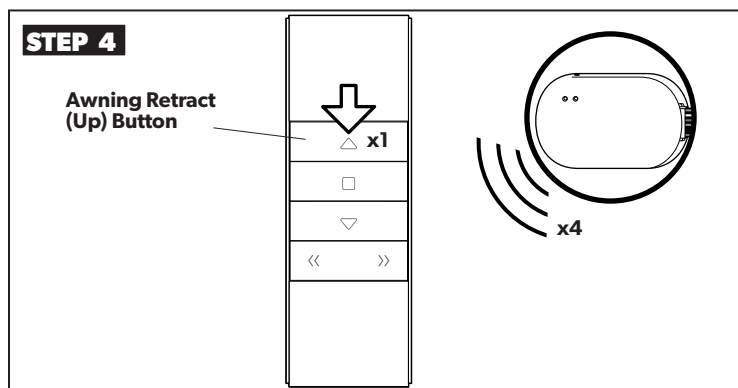
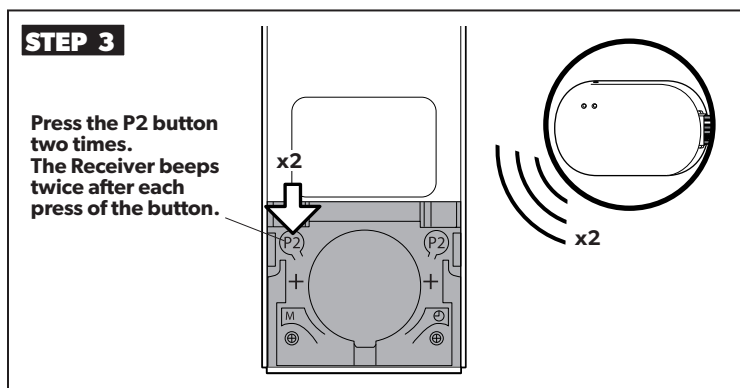
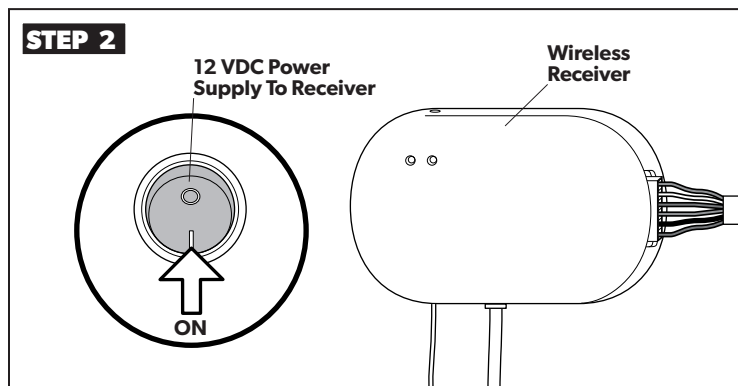
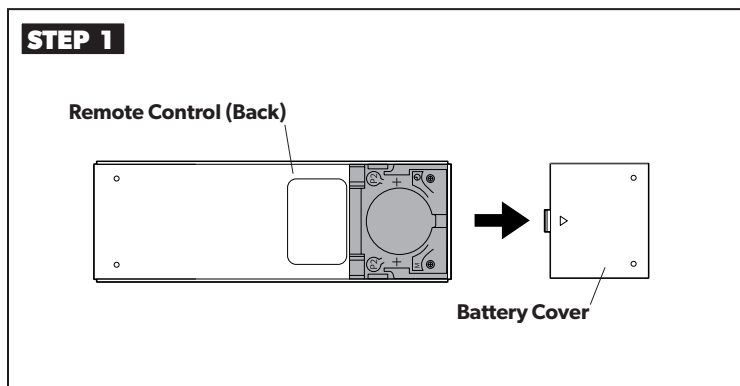
# OPERATION

## B. Programming The Remote Control

**⚠ WARNING** IMPACT OR CRUSH HAZARD. Make sure the awning retract button and the awning extend button operate the awning in the intended direction. Failure to obey this warning could result in death or serious injury.

**i** Complete each programming step within four seconds of the previous step to keep the receiver in pairing mode. If the receiver resets, restart the programming process.

- Disconnect all power to the receiver and wait 10 seconds before reconnecting to begin the programming process.



- Refer to Section "A. Opening And Closing The Awning" on page 3 to test the remote control.

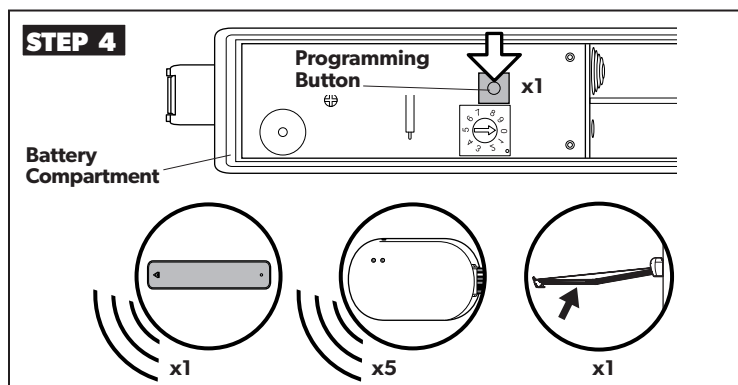
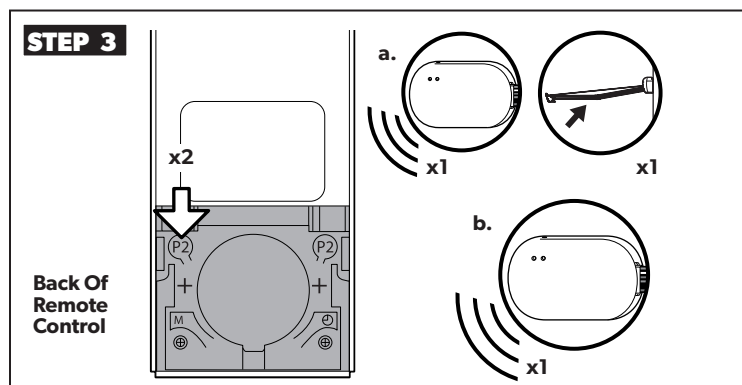
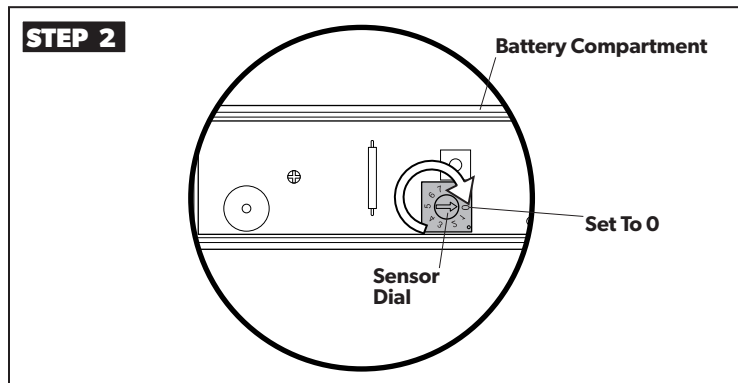
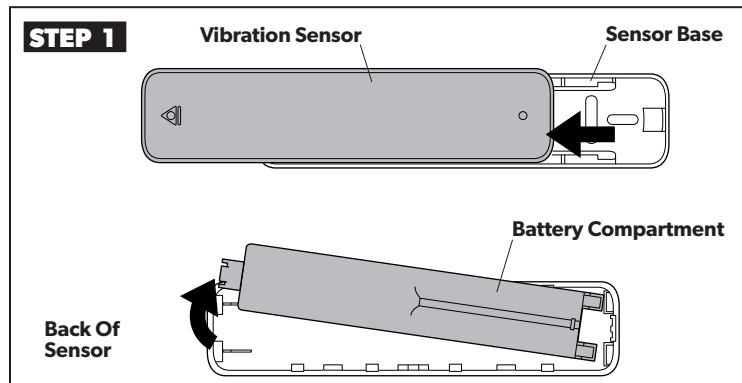
**i** When Step 4 is completed, proceed immediately to Section "C. Programming The Vibration Sensor" on page 5.

# OPERATION

## C. Programming The Vibration Sensor

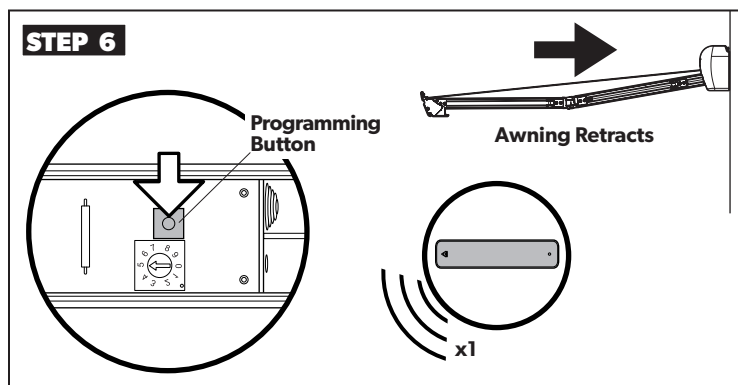
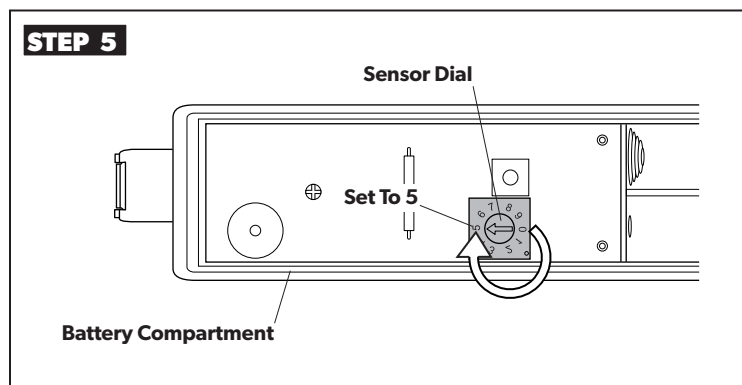
**i** Complete each programming step within four seconds of the previous step to keep the receiver in pairing mode. If the receiver resets, restart the programming process.

- When installing a vibration sensor, complete the steps in Section “B. Programming The Remote Control” immediately before beginning Step 1 of this procedure.



- Press the P2 button once. The wireless receiver beeps once and the awning jogs.
- Press the P2 button a second time. The receiver beeps once.

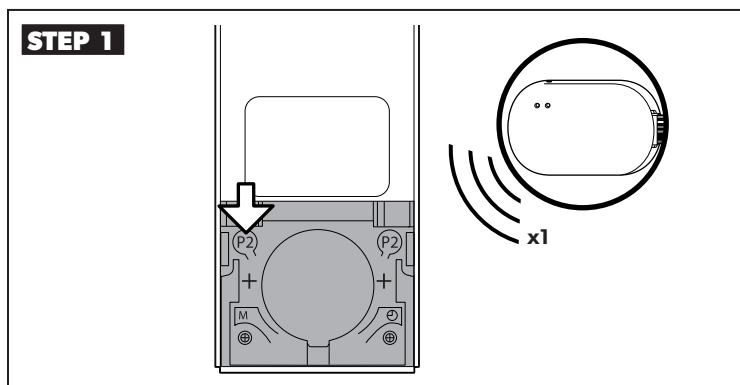
- Press the vibration sensor programming button. The sensor beeps once, the wireless receiver beeps five times, and the awning jogs.



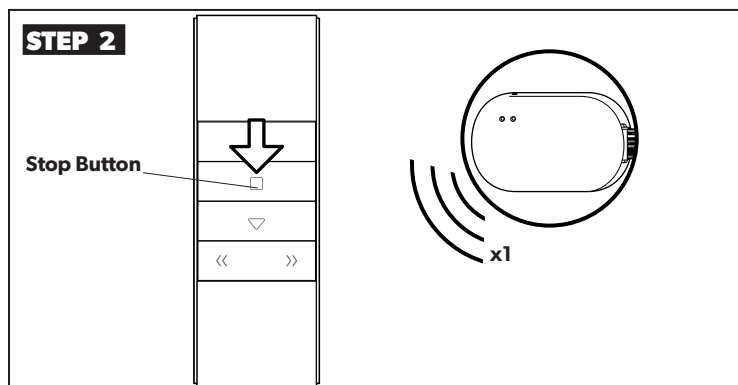
- Set the vibration sensor dial to the desired level of detection (see Section “A. Adjusting The Vibration Sensor” on page 9).
- Press the vibration sensor programming button once. The sensor beeps once and the awning retracts.

# OPERATION

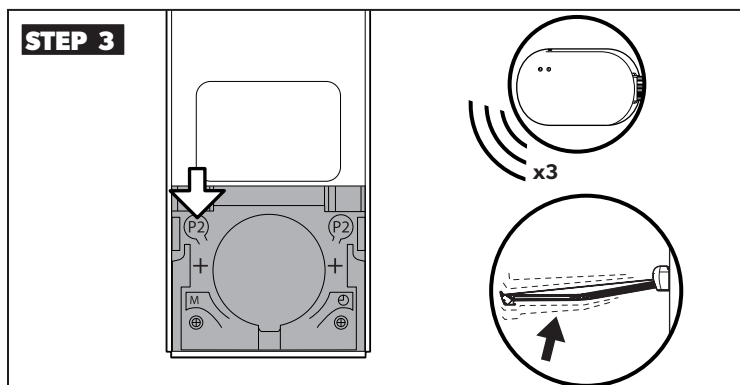
## D. Resetting The Receiver



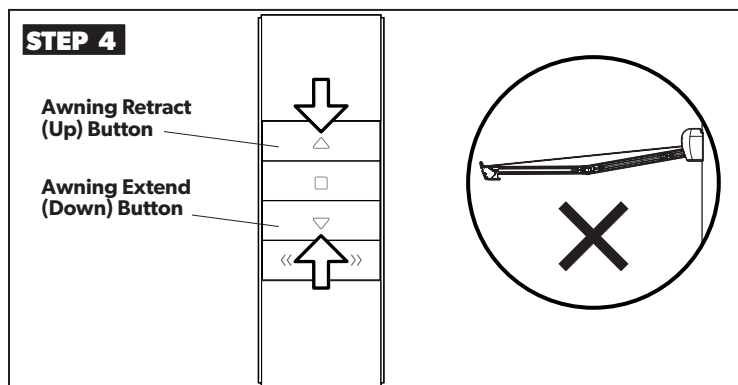
- Press the P2 button on the remote. The receiver beeps once.



- Press the Stop Button on the remote. The receiver beeps once.



- Press the P2 button on the remote. The receiver beeps three times and the awning jogs.



- On the remote, press the Up button, then the Down button.
  - If the awning does not move, the receiver is reset.
  - If the awning moves, repeat Steps 1 through 3 until the awning does not move when the Up and Down buttons are pressed.
- Refer to Section “B. Programming The Remote Control” on page 4 to reprogram the remote to the receiver.

## E. Testing The Awning Before Travel

**⚠ WARNING** Failure to obey the following warnings could result in death or serious injury:

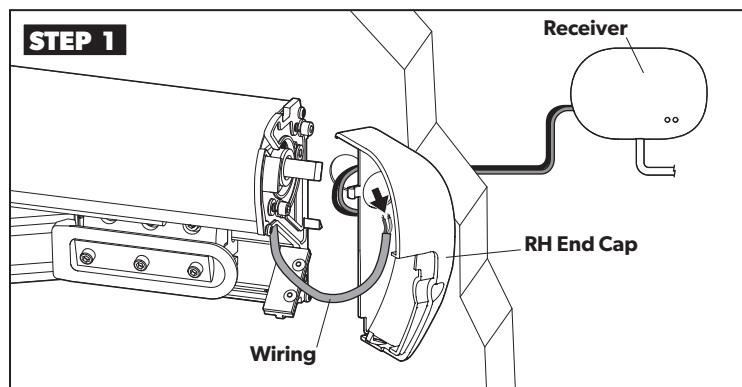
- **IMPACT OR CRUSH HAZARD.** Do NOT transport RV if awning fabric is torn or damaged, even if awning closes successfully. Damaged awning fabric could compromise awning’s stability and could allow awning to extend quickly and unexpectedly during transit.
- **IMPACT OR CRUSH HAZARD.** Verify ignition interlock is working correctly before traveling with RV. If awning responds to remote with ignition in ON position, accidental operation during transit could occur. The awning **MUST** be disabled, then serviced by a qualified service technician.
- Inspect the awning for damage. If the fabric is torn, tie the lateral arm assemblies tightly before travel. Then contact a qualified service technician for repairs.
- Test the ignition interlock system by turning the ignition to the ON position. Attempt to retract the awning. If the awning operates, refer to “Troubleshooting” on page 14.

# OPERATION

## F. Closing The Awning Using An Auxiliary Power Method

**⚠ WARNING** ELECTRICAL SHOCK HAZARD. Disconnect power from product before accessing wiring connections. There may be issues mimicking a power failure with electric current still present, or power may return unexpectedly. Failure to obey this warning could result in death or serious injury.

**i** Rule out simple causes for power failure BEFORE proceeding. Refer to “Troubleshooting” on page 14. After awning is closed manually, it will require service by a qualified service technician.



- Disconnect power to the RV, the receiver unit, and the awning.
- Unplug the motor connector from the RV wiring connector inside the RH end cap.
- Using 16 gauge wire leads, connect the positive (+) lead wire to the BLUE motor wire and the negative (-) lead wire to the BROWN motor wire. Secure using electrical tape.
- Connect the other end of the wire leads to the positive (+) and negative (-) terminals on an external 12 VDC power source.
- Disconnect the wire leads from the power source when the awning retracts fully.

**i** If the awning does not retract, proceed to “G. Closing The Awning Manually” on page 8.

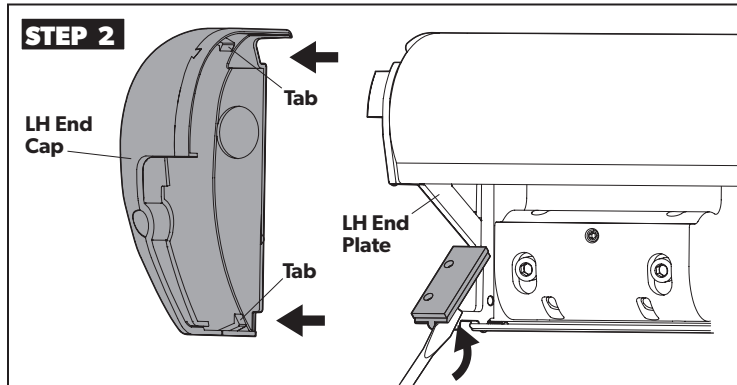
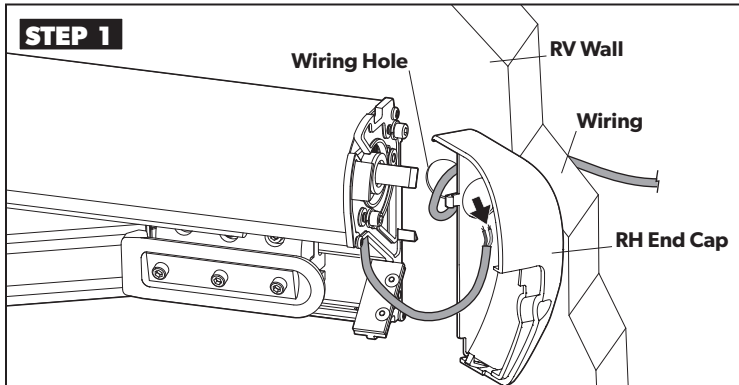
# OPERATION

## G. Closing The Awning Manually

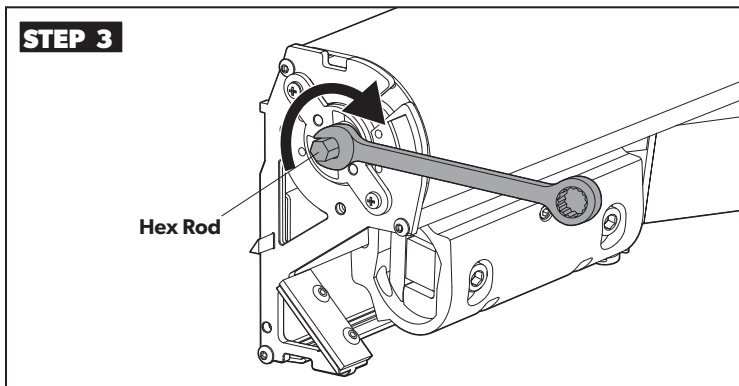
**⚠ WARNING** PINCH HAZARD. Keep CLEAR of arm assemblies while closing awning. Arm assemblies will close against back rail. Failure to obey this warning could result in death or serious injury.

**i** Read BEFORE proceeding with this section:

- Perform these steps **ONLY** if the awning did not retract after performing the steps in "E. Testing The Awning Before Travel" on page 6. Use a 3/8" wrench (or drill) and a flat-bladed screwdriver to complete steps.
- The awning may display up to a 4" gap when closed. To remove the gap, readjust the awning close limit after a qualified service technician has repaired the awning.



- Disconnect power to the RV, the receiver unit, and the awning.
- Unplug the motor connector from the RV wiring connector inside the RH end cap.



- Use a wrench to turn the hex rod until the awning is closed.

**i** The awning may not close completely. Up to a 4" gap may exist between the lead rail and the awning case.

- Reinstall the LH end cap.

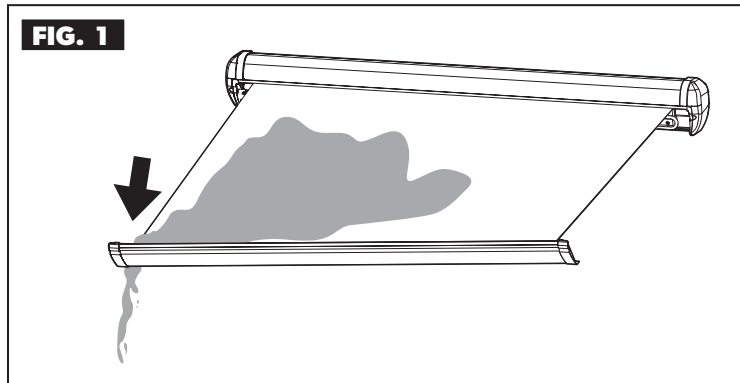


# OPERATION

## H. Understanding The Water Shed Feature

**⚠ WARNING** Failure to obey the following warnings could result in death or serious injury:

- **IMPACT OR CRUSH HAZARD.** Do **NOT** allow water to pool or snow to accumulate on awning fabric. The awning will become unstable, and could bend or collapse. Whenever heavy rain or snow is expected, place awning in stowed (closed) position.
- **IMPACT OR CRUSH HAZARD.** Do **NOT** constrain or tie down lead rail as this could disable the water shed feature.



- During light rain, the awning will automatically lower one side, to keep water from pooling on the awning.

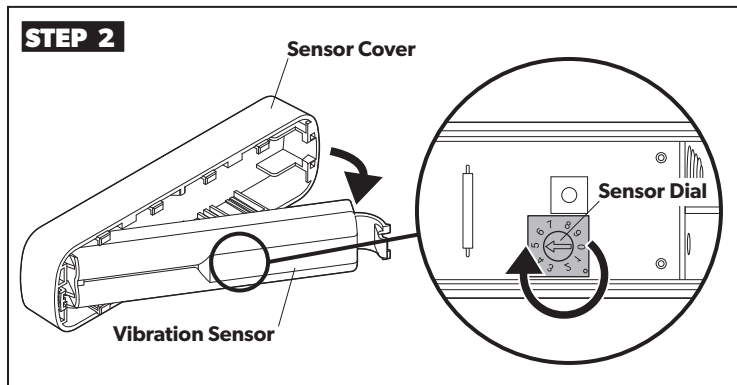
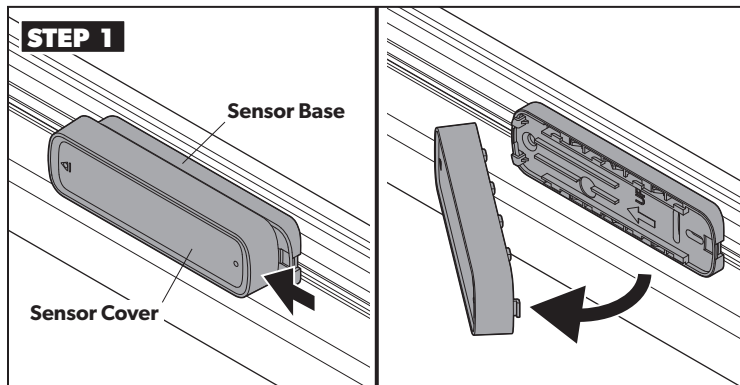
# ADJUSTMENTS

## A. Adjusting The Vibration Sensor

**⚠ WARNING** **IMPACT OR CRUSH HAZARD.** Keep your hands, arms, head, and torso clear of the awning hardware during periods of rain, wind, etc. These conditions may cause the vibration sensor to unexpectedly activate and retract the awning. Failure to obey this warning could result in death or serious injury.

**NOTICE** Failure to obey the following notices could damage product or property:

- Do **NOT** rely on the vibration sensor to prevent damage to the awning. The awning should **ALWAYS** be closed when unattended or when strong rain, wind, etc., is expected.
- Do **NOT** hang any items from, or block, the travel of the hardware arms or awning when the vibration sensor is installed.



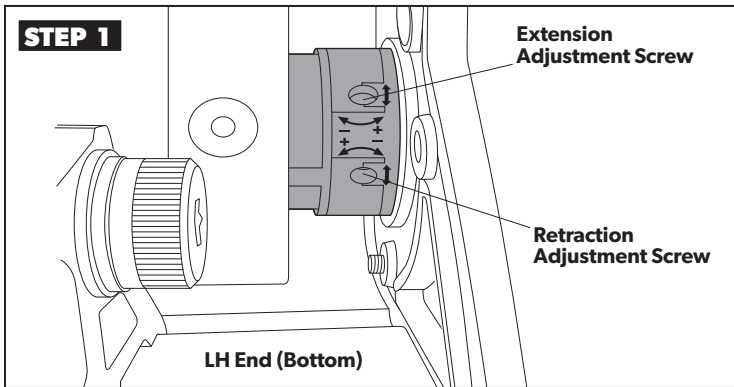
- To adjust the sensitivity of the vibration sensor, turn the dial to a setting between 1 (most sensitive) and 9 (least sensitive). Settings 0 and 5 are for programming only.



After making adjustments, confirm that the vibration sensor is functioning correctly. See the installation manual for more details.

# ADJUSTMENTS

## B. Adjusting The Awning Open/Close Limits



- To adjust the awning so the front rail fits tightly against the case when the awning is fully closed:
  - Turn the retraction adjustment screw clockwise for less awning retraction.
  - Turn the retraction adjustment screw counterclockwise for more awning retraction.

**i** The motor should turn off and stop turning when the awning is fully closed. If the motor continues turning after the awning closes, damage to the motor or awning components may occur.

- To adjust the awning so the fabric is not overly taut or sagging when the awning is fully open:
  - Turn the extension adjustment screw clockwise for less awning extension.
  - Turn the extension adjustment screw counterclockwise for more awning extension.

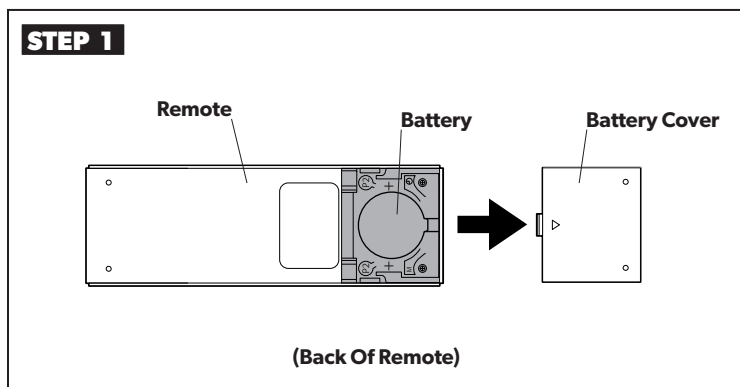
# MAINTENANCE

**NOTICE** Failure to obey the following notices could damage product or property:

- Do **NOT** use insecticides or other sprays near the awning fabric. These could cause stains, and could adversely affect the fabric's ability to repel water.
- Do **NOT** expose the awning to adverse environmental conditions, corrosive agents, or other harmful conditions.
- Do **NOT** allow the corner of the entry door to contact the awning fabric. Otherwise, premature wear or tearing of awning fabric could occur.
- **NEVER** close the awning (for storage) when wet. The combination of moisture and dirt could result in mildew, discoloration, and stains. If it is necessary to roll up awning (temporarily) while wet, make sure you roll it out and let it dry (as soon as conditions allow) before rolling it up again.
- Do **NOT** allow dirt, leaves, or other debris to accumulate on the awning, which could cause abrasion and stains. Mildew could grow on dirt and organic debris, causing permanent discoloration, stains, and odors to the awning fabric.
- Do **NOT** use rechargeable batteries (NiMH, NiCD, etc.). Disposable Lithium or Alkaline batteries are recommended. Do not mix battery types.
- Make sure battery polarity is matched correctly to battery compartment.

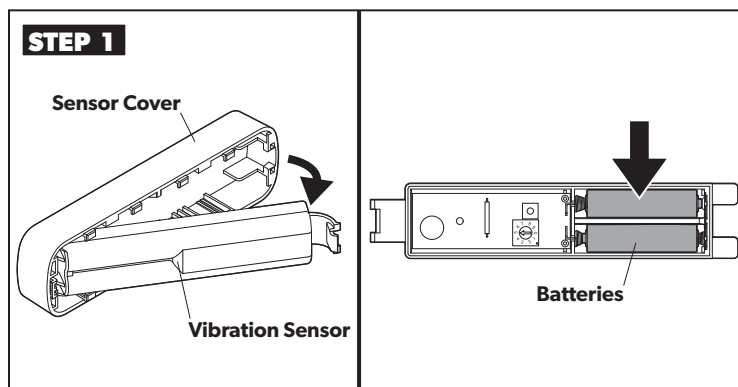
# MAINTENANCE

## A. Changing The Batteries In The Remote



- Insert one CR2430 Li-MnO<sub>2</sub> battery. Replace battery cover.

## B. Changing The Batteries In The Vibration Sensor

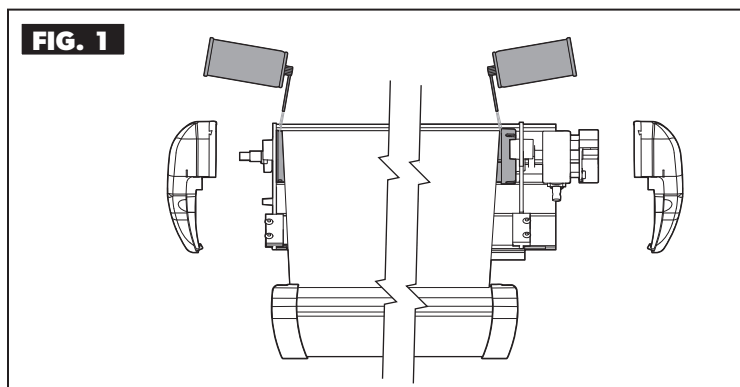


- Remove the vibration sensor from the sensor base on the lead rail and pull slide off the sensor cover.
- Insert two AAA disposable batteries. A short beep will emit from the sensor when the batteries are in place.
- Replace the sensor cover and reattach the vibration sensor.

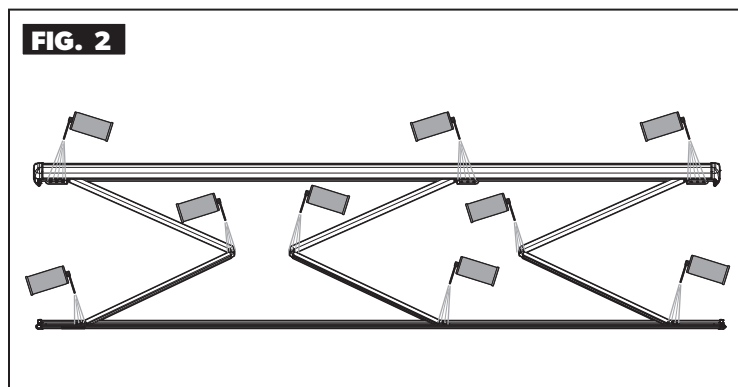
## C. Maintaining The Hardware

**NOTICE** Failure to obey the following notices could damage product or property:

- Do **NOT** use strong chemicals or abrasives to clean parts, as their protective surfaces will be damaged.
- Do **NOT** use silicone sprays near labels. Otherwise, the adhesive bond to product surfaces could weaken.



- Spray silicone lubricant on the moving parts of the awning.

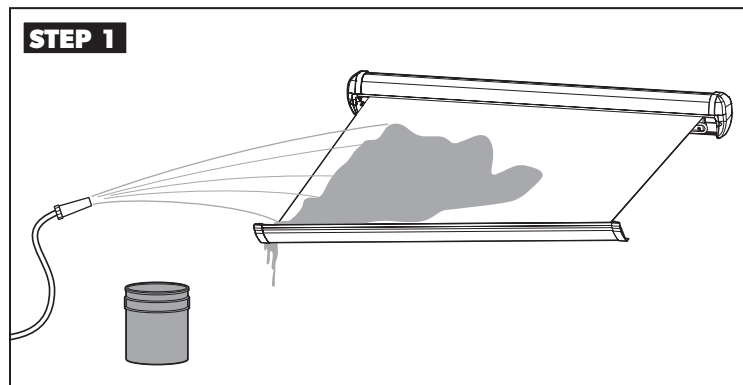


- Spray silicone lubricant at the joints of the arm assemblies.

# MAINTENANCE

## D. Maintaining The Fabric

### Cleaning The Awning Fabric



**NOTICE** Failure to obey the following notices could damage product or property:

- Do **NOT** use abrasive or corrosive cleaners, mildew removers, or hard bristle brushes on the awning fabric.
- Remove solution **COMPLETELY** from awning fabric. Bleach will degrade awning fabric if **NOT** completely rinsed off.

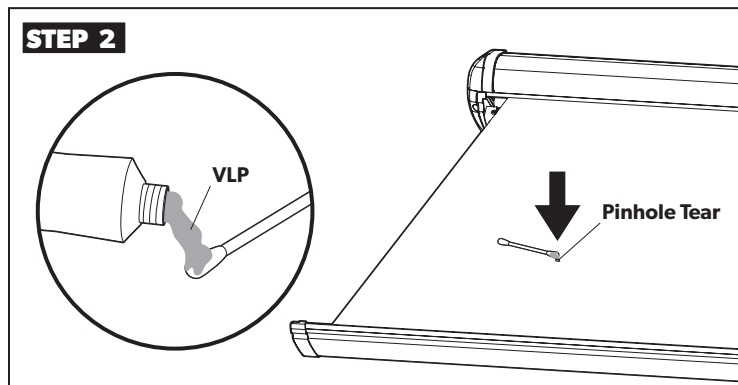
**i** Wrinkling is a normal characteristic of a vinyl awning. To minimize wrinkling, leave the awning open during warm weather. If a slight “travel line” appears where the door roller (if installed) contacts the fabric, the integrity of the fabric will **NOT** be affected.

- Mix a cleaning solution of 1/4 cup dish soap and 1/4 cup bleach with five gallons of fresh water.
- Open the awning, apply the cleaning solution, then close the awning for five minutes.
- Open the awning and completely remove the solution from the top and bottom of the awning fabric, using clean water.

**i** Rinse thoroughly. Bleach degrades the fabric.

- Repeat process as necessary. Make sure the awning fabric is dry before closing.

### Repairing The Awning Fabric



**NOTICE** **NEVER** close (roll up) awning when vinyl liquid patch (VLP) is wet. Otherwise, damage to other parts of the awning fabric (melting through layers) will occur.

- To repair a pinhole or a spot flaked off of the coating, apply a very small amount of VLP to a cotton swab.
- Gently roll the cotton swab around the pinhole. The VLP melts the coating (on the fabric) and fills in the pinhole so it blends with the vinyl color.
- Make sure the VLP is dry before closing the awning.

**i** VLP is available from Dometic Corporation. Reference part number 3314216.000 when ordering.

# TROUBLESHOOTING

## A. Awning Motor And Remote

PROBLEM	CAUSE	SOLUTION
Awning motor does not respond to awning remote.	Motor will not operate for approximately 60 seconds after awning is closed by vibration sensor.	Power receiver OFF then ON to temporarily bypass delay.
	Remote batteries may be spent.	Press either the UP or DOWN button briefly to verify the LED lights momentarily (on remote). If LED does not light, install new battery. See Section "A. Changing The Batteries In The Remote" on page 11.
	Remote is not activated, programmed to receiver, or remote programming is corrupt.	If remote is added from a kit, see Section "B. Programming The Remote Control" on page 4.
		Receiver may need to be reset. See Section "D. Resetting The Receiver" on page 6.
	Awning is disconnected from power source.	Check all power connections.
	RV or power source breaker is tripped, or fuse is blown.	Reset breaker, or replace fuse as necessary. If the issue persists, contact a qualified service technician.
	A power line switch is OFF, or ignition disconnect switch is ON.	Turn power line switch ON, or ignition switch OFF.
	RV battery has discharged.	Recharge RV battery.
	Awning motor is damaged or defective.	Close awning manually and contact a qualified service technician.
Awning motor travels in wrong direction when UP or DOWN button is pressed.	Remote programming for motor rotation is incorrect.	The motor and remote will need to be reprogrammed to change the direction on the remote. See Section "B. Programming The Remote Control" on page 4.
Awning does not fully extend, or extends too far (fabric edge sags).	Awning out limit is set incorrectly.	See "B. Adjusting The Awning Open/Close Limits" on page 10 to reset the limit.
Awning closes slightly after stopping on extension.	This is a feature added to enhance fabric tension and appearance.	No action required.

# TROUBLESHOOTING

## B. Vibration Sensor

PROBLEM	CAUSE	SOLUTION
Awning does not automatically close when windy conditions are present.	Vibration sensor batteries are low.	Replace batteries. See Section "B. Changing The Batteries In The Vibration Sensor" on page 11.
	Vibration sensor is not programmed to awning motor.	Program the vibration sensor. See Section "C. Programming The Vibration Sensor" on page 5.
	Sensitivity setting is too low.	Adjust to appropriate sensitivity level. See Section "A. Adjusting The Vibration Sensor" on page 9.
Awning automatically closes during light breezes.	Sensitivity setting is too high.	
Awning automatically closes after 30 minutes without windy conditions.	Vibration sensor batteries are low. This is indicated by the vibration sensor beeping at regular intervals.	Replace batteries. See Section "B. Changing The Batteries In The Vibration Sensor" on page 11.
Awning automatically closes after one hour without windy conditions.	Vibration sensor is missing, or installed incorrectly on sensor base.	Install vibration sensor onto sensor base correctly. See vibration sensor instructions on how to replace the vibration sensor.
	Vibration sensor batteries are dead.	Replace batteries. See Section "B. Changing The Batteries In The Vibration Sensor" on page 11.
	Vibration sensor is damaged or defective.	Replace vibration sensor. See vibration sensor instructions on how to replace the vibration sensor.
Vibration sensor does not beep when new batteries are installed.	Vibration sensor batteries are installed incorrectly.	Install batteries to correct polarity (direction).



## LIMITED ONE-YEAR WARRANTY (AWNINGS)

THE SELLER NAMED BELOW MAKES THE FOLLOWING WARRANTY WITH RESPECT TO THE DOMETIC PRODUCT:

1. This Warranty is made only to the first purchaser (hereinafter referred to as the "Original Purchaser"), who acquires the Dometic Product for his or her own use and when the Dometic Product is installed and operated within the continental United States and Canada.
2. **WARRANTY PERIOD:** This Warranty will be in effect for one (1) year from the date of purchase by the Original Purchaser. The Original Purchaser should retain a copy of the dated bill of sale as evidence of the date of purchase.
3. **WARRANTY:** This Warranty covers labor, specified parts, and freight. The Dometic Product shall be free from defects in material and workmanship at the time of sale and under normal use. All Dometic Products (except those specifically built for commercial use) are warranted only when installed per the Seller's installation instructions on vehicles built to R.V.I.A. A119-2 and C.R.V.A. Z-240 Standards. This Warranty does NOT cover conditions unrelated to the material and workmanship of the Dometic Product. Such unrelated conditions include, but are not limited to: (a) damage not reported within 10 days of ownership; such damage includes, but is not limited to, pin holes, out of square fabric, tears, and rips to fabric; (b) failure or damage caused by storms, rain, water pooling, or any acts of God; (c) faulty installation or installation that does not comply with the Seller's instructions or R.V.I.A. and C.R.V.A. standards, and any damage resulting from such; (d) damage or failure caused by installation of accessories not manufactured and marketed by the Seller or any non-Dometic parts that are installed as replacement parts; (e) the need for normal maintenance and any damage resulting from the failure to provide such maintenance; (f) failure to follow Seller's instructions for use of this Dometic Product; (g) any accident to, or misuse of, any part of the Dometic Product and any alteration by anyone other than the Seller or its authorized representative; (h) cosmetic issues caused during installation; (i) normal wear; and (j) Dometic Product abuse.
4. **WARRANTY COVERS DOMETIC COMPONENT PARTS:** All Dometic component parts are covered under this Limited Warranty.
5. It is suggested that the Original Purchaser provide preventative maintenance on a yearly basis. The preventative maintenance suggested is: (a) assure proper winding of fabric; (b) cleaning of fabric; and (c) inspection and lubrication of cam lock lever, lift-lock assembly, and hardware slide areas. The cost of this preventative maintenance is the Original Purchaser's responsibility and the preventative maintenance should take about one hour.
6. **WARRANTY REMEDY:** In order to obtain the benefits of this Warranty, the Original Purchaser has the following two options during the WARRANTY PERIOD:
  - a. Preferred option: Deliver the Dometic Product for inspection to the nearest Authorized Dometic Service Center during the Warranty Period. To obtain the location of the nearest Authorized Dometic Service Center, refer to <https://www.dometic.com/en-us/us/find-a-dealer>. The Authorized Dometic Service Center will work with the Seller to obtain Warranty coverage if a Seller defect is identified. **CONFIRM THE SERVICE CENTER IS AN AUTHORIZED DOMETIC SERVICE CENTER. DO NOT PAY THE SERVICE CENTER FOR WARRANTY REPAIRS.**
  - b. Second option: If it is not feasible under the circumstances to deliver the Dometic Product to an Authorized Dometic Service Center, please call 1-800-544-4881 for additional Warranty assistance. Seller prefers option a. first and only option b. if option a. is determined not to be feasible under the circumstances
7. Any item returned in the manner described in paragraph 6 will be examined by the Authorized Dometic Service Center. If it is found that the returned item was defective in material and workmanship at the time of sale, the Authorized Dometic Service Center will contact the Seller for Warranty coverage. The Seller shall, at Dometic's sole option, repair or replace the Dometic Product, or refund Original Purchaser's purchase price. If the Seller determines that repairs to the Dometic Product are to be made, then only authorized Dometic parts will be used.
8. The Seller does not authorize any person or company to create any Warranty obligations or liability on its behalf. This Warranty is not extended by the length of time which you are deprived of the use of the Dometic Product.
9. **IN NO EVENT SHALL SELLER BE LIABLE FOR EITHER INCIDENTAL OR CONSEQUENTIAL DAMAGES. THIS INCLUDES ANY DAMAGE TO ANOTHER PRODUCT OR PRODUCTS RESULTING FROM SUCH A DEFECT. SOME STATES DO NOT ALLOW THE EXCLUSION OR LIMITATION OF INCIDENTAL OR CONSEQUENTIAL DAMAGES, SO THE ABOVE LIMITATIONS MAY NOT APPLY TO YOU.**
10. **ANY IMPLIED WARRANTY, INCLUDING THE IMPLIED WARRANTY OF MERCHANTABILITY AND FITNESS FOR ANY PURPOSE, IS LIMITED TO THE DURATION OF THIS LIMITED WARRANTY. SOME STATES DO NOT ALLOW LIMITATIONS ON HOW LONG AN IMPLIED WARRANTY LASTS, SO THE ABOVE LIMITATION MAY NOT APPLY TO YOU.**
11. **THIS WARRANTY GIVES SPECIFIC LEGAL RIGHTS, YOU MAY ALSO HAVE OTHER RIGHTS WHICH VARY FROM STATE TO STATE.** No action to enforce this Warranty shall be commenced later than ninety (90) days after the expiration of the Warranty Period. Claims must be submitted in writing to the Dometic Warranty Department.
12. The Seller reserves the right to change the design of any Dometic product without notice and with no obligation to make corresponding changes in Dometic products previously manufactured.

### PROTECTION FOR YOUR NEW INVESTMENT

We appreciate that you have chosen to purchase a Dometic product for your recreational vehicle and we want to help you protect this wise investment. We at Dometic, back our products with one of the most comprehensive warranties in the industry. **Register your product online at: [www.eDometic.com](http://www.eDometic.com).**

### Dometic Corporation

Warranty Department  
1120 North Main Street  
Elkhart, Indiana 46514  
**1-574-294-2511**  
Register Your Product @  
[www.eDometic.com](http://www.eDometic.com)

### REVISION B

Form No. 3108434.048 (9/17)  
(French 3108925.037\_B)  
©2017 Dometic Corporation  
LaGrange, IN 46761