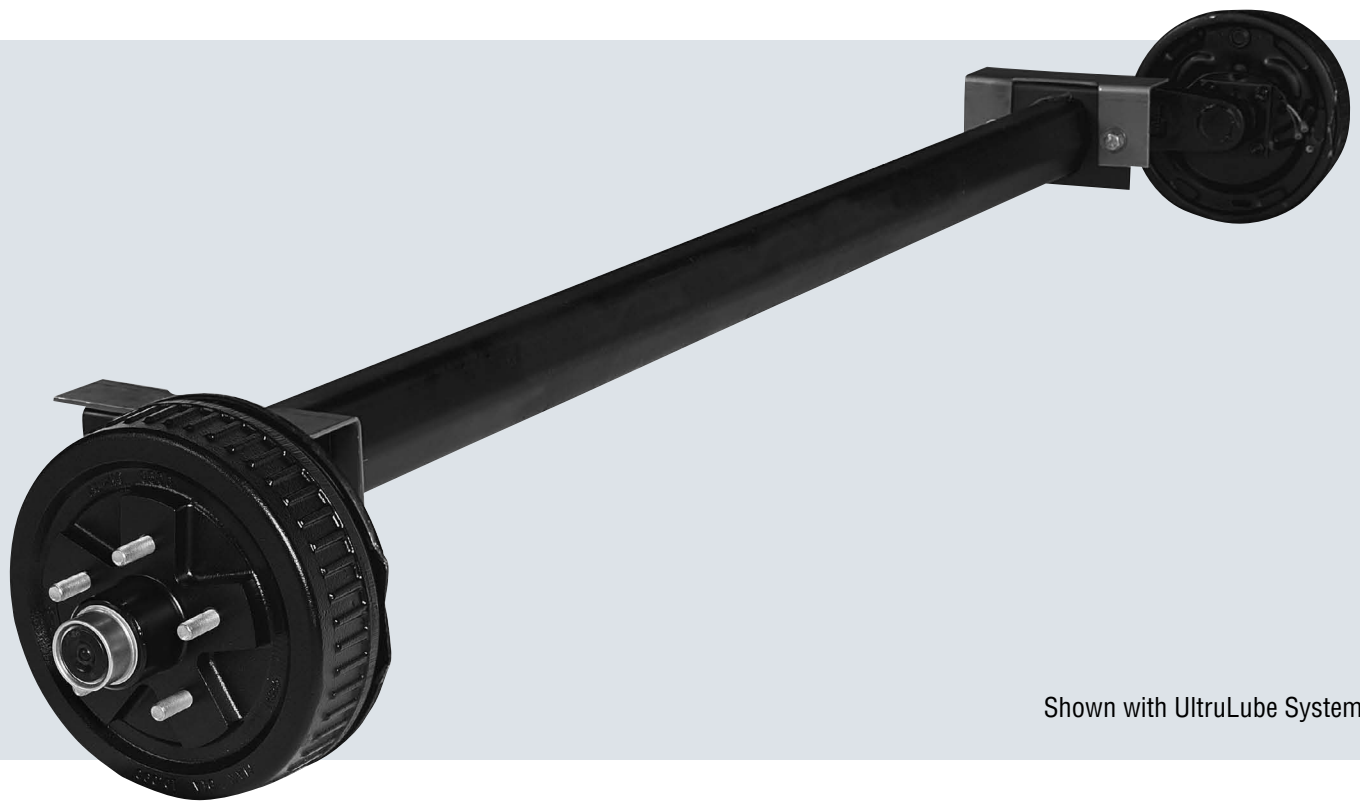


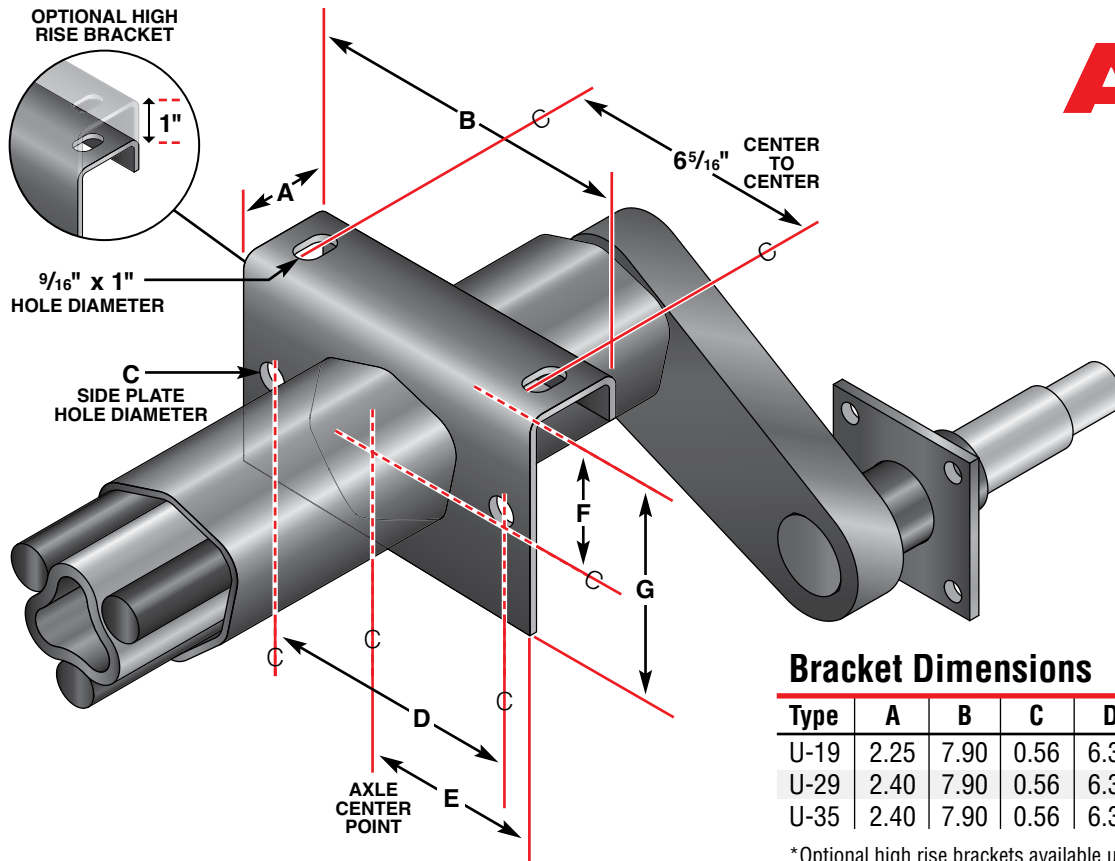
U-19 / U-29 / U-35 Axle Assembly



Shown with UltruLube System

The U-19, U-29 and U-35 axle utilize AL-KO's patented hexagonal design. This design consists of three rubber cords on each side of the axle assembly which are encased under pressure between the hexagonal outer tube and triangular inner tube. Every AL-KO axle is designed, manufactured and tested to meet your specific application.

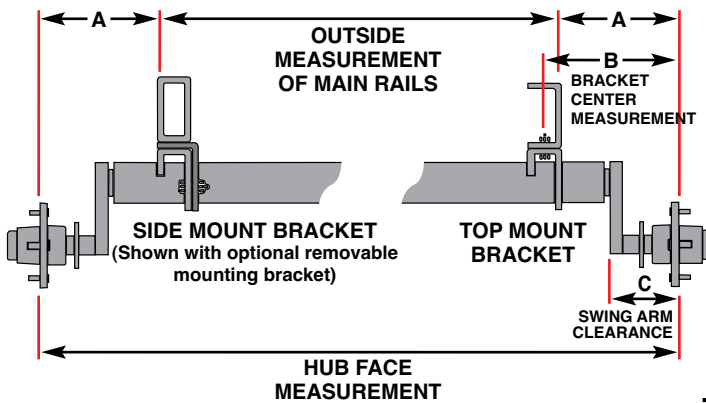
- 80 mm outer axle tube – U19
- 97 mm outer axle tube – U29 and U35
- Independent suspension – German engineered
- Various start angles allow precise trailer ride height
- Precision machined spindle with inner journal dimension of 1 3/8" and an outer journal dimension of 1 1/16"
- Double lipped spring loaded seals
- 10" x 2.25" Available in 545, 5475, 550, 555, or 655 bolt pattern
- 10" x 1.75" Advanced Design available in 545 and 550 bolt patterns
- Integral cast hubs / drums CNC machined accuracy
- CSA approved 10" electric brake or choose optional hydraulic drum or disc brake
- Grease lubrication or the optional premium UltruLube System
- 2 year limited warranty on complete axle assembly
- 5 year limited warranty on Rubber Suspension System



Bracket Dimensions

Type	A	B	C	D	E	F*	G
U-19	2.25	7.90	0.56	6.30	3.95	2.63	4.20
U-29	2.40	7.90	0.56	6.30	3.95	2.63	5.10
U-35	2.40	7.90	0.56	6.30	3.95	2.63	5.10

*Optional high rise brackets available upon request

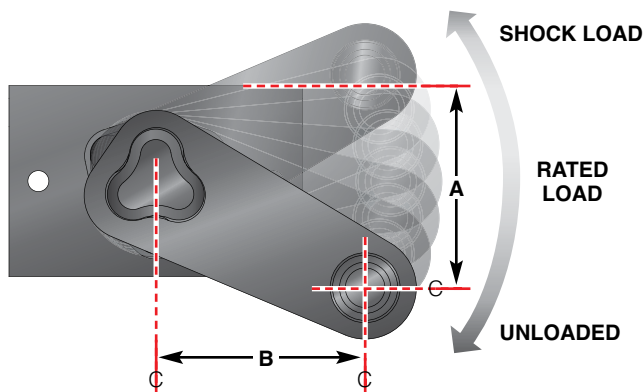


Overhang Chart*

Type	Capacity Max	Min Hub Face	A**		B		C
			Min	Max	Min	Max	
U-19	2200	45.03	13.05	20.00	15.30	22.25	6.28
U-29	3000	48.97	13.05	24.00	15.30	26.25	6.28
U-35	3500	52.91	13.05	23.00	15.45	25.40	6.28

*Hub face measurements only available in 1/4" increments

**Add 1" minimum for side mount brackets turned outward

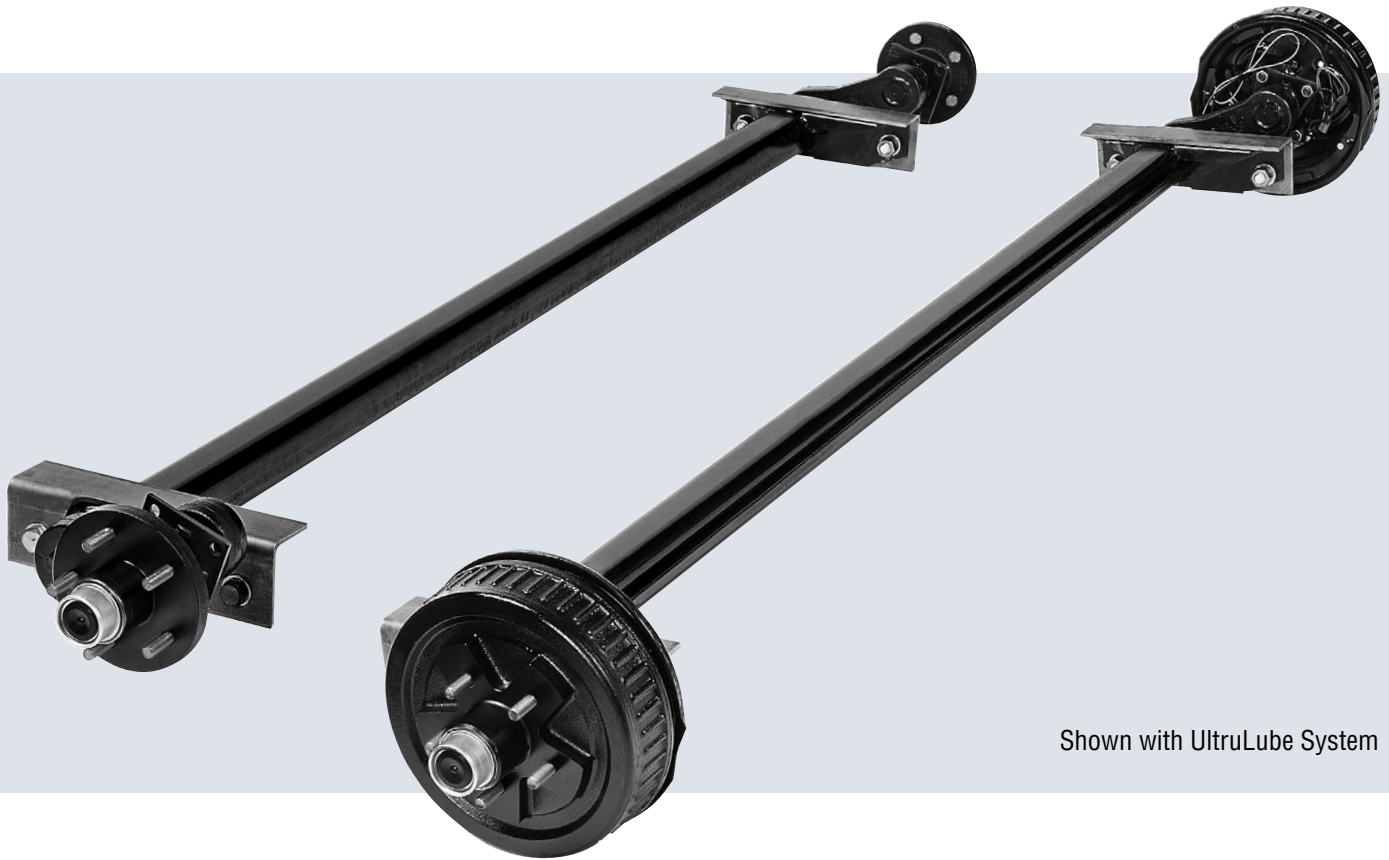


Total Swing Arm Travel

Type	Start Angle	A			B		
		Unloaded	Rated Load	Shock Load	Unloaded	Rated Load	Shock Load
U-19	+40	5.8	3.8	2.4	4.5	5.6	5.9
	+25	4.5	2.0	0.5	5.3	5.9	5.6
	+10	3.0	0.6	(1.0)	5.8	5.7	5.0
	0	2.0	(0.4)	(1.8)	5.9	5.4	4.5
	-10	1.0	(1.3)	(2.5)	5.8	4.9	4.1
	-20	0.0	(2.2)	(3.4)	5.5	4.5	3.4
U-29	+40	6.6	4.5	3.0	4.8	5.9	6.3
U-35	+20	5.3	2.6	0.9	5.7	6.3	5.9
	+10	3.7	1.1	(0.6)	6.2	6.1	5.3
	0	2.6	0.0	(1.5)	6.3	5.7	4.8
	-10	1.5	(0.9)	(2.2)	6.2	5.3	4.4
	-20	0.4	(1.9)	(3.2)	5.9	4.7	3.7

QF-35 Axle Assembly

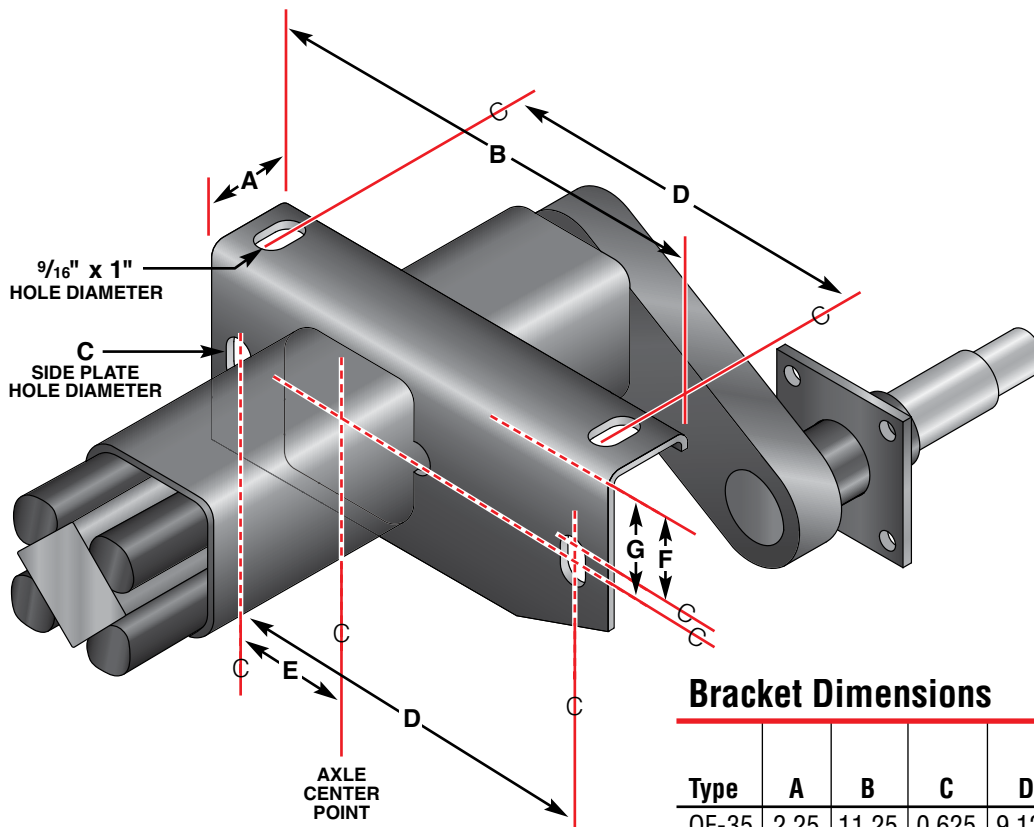
2,200 – 3,500 lb.



Shown with UltruLube System

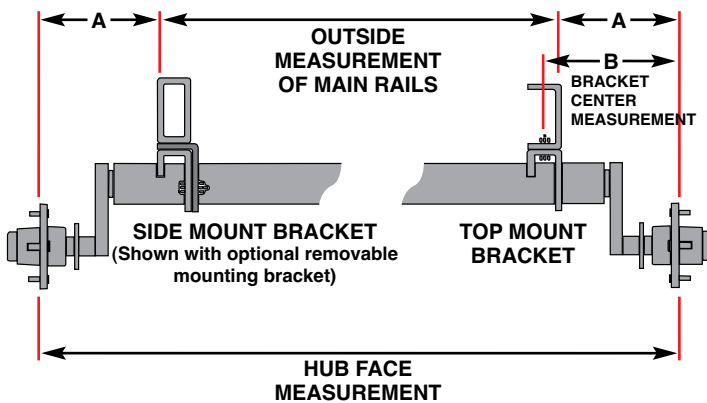
The QF-35 Q-Flex axle utilizes a four rubber cord torsion design to provide a smooth, yet durable ride. The axle design consists of four rubber cords on each side of the axle assembly, which are encapsulated between a high strength square inner bar and square outer tube. Every AL-KO Q-Flex axle is designed, manufactured and tested to meet your specific application.

- Independent suspension
- Variety of start angles allow wider range of trailer ride height options
- Maximum ground clearance with low profile bracket design
- Precision machined spindle with inner journal dimension of 1 3/8" and an outer journal dimension of 1 1/16"
- Double lipped spring loaded seals
- Available in 545, 5475, 550, 555, or 655 bolt patterns
- 10" x 1.75" Advanced Design available in 545 and 550 bolt patterns
- Integral cast hubs / drums CNC machined accuracy
- CSA approved 10" electric brake or choose optional hydraulic drum or disc brake
- Grease lubrication or the optional premium UltruLube System
- 2 year limited warranty on complete axle assembly
- 5 year limited warranty on Rubber Suspension System



Bracket Dimensions

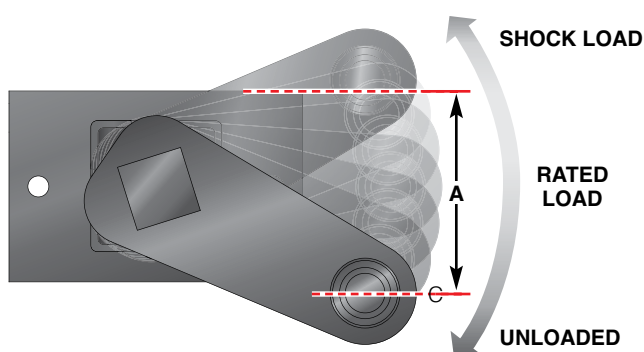
Type	A	B	C	D	E	F	G Low Profile	G High Profile
QF-35	2.25	11.25	0.625	9.120	4.25	2.00	1.56	2.31
QF-35	2.50	10.00	0.70	8.00	2.50	1.62	1.53	—



Overhang Chart*

Type	Capacity Max	Min Hub Face	A		B	
			Min	Max	Min	Max
QF-35	3500	49.00	13.00	26.00	15.25	28.25

*Hub face measurements only available in 1/4" increments



Total Swing Arm Travel

Type	Start Angle	Low Profile			High Profile		
		Unloaded	Rated Load	Shock Load	Unloaded	Rated Load	Shock Load
QF-35	45 Down	5.81	4.06	2.06	6.56	4.81	2.81
	22.5 Down	3.62	1.56	(0.50)	4.37	2.31	0.25
	10 Down	2.56	0.56	(1.44)	3.31	1.31	(0.69)
	0	1.56	(0.50)	(2.32)	2.31	0.25	(1.57)
	10 Up	0.56	(1.19)	(2.69)	1.31	(0.44)	(1.94)
	22.5 Up	(0.50)	(2.07)	(3.44)	0.25	(1.32)	(2.69)