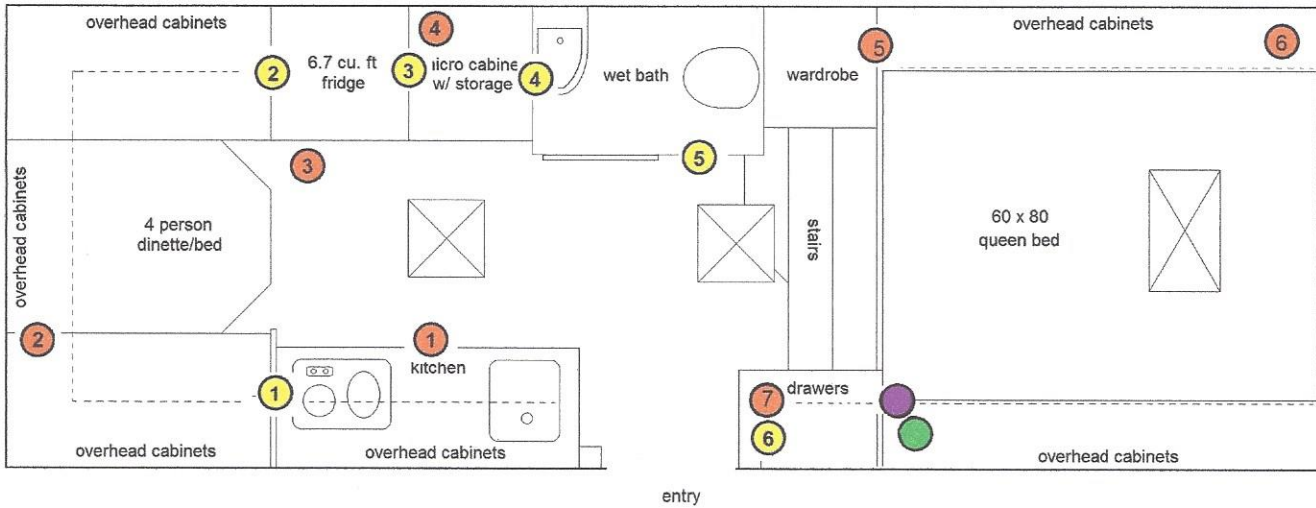


Escape 5.0 TA



Standard Location for 12V Outlet. Foot of bed on Passenger Side



Standard Location for TV Coaxial with 120V Outlet. Located in face of Overhead Cabinet on Passenger Side at foot of bed.



1. Reinforced Wall, Kitchen Wall, Dinette Side. (25lbs)
2. Reinforced Wall, Fridge Wall, Bench Side. (25lbs)
3. Reinforced Wall, Fridge Wall, Microwave Cabinet Side. (25lbs)
4. Reinforced Wall, Bathroom Wall, Microwave Cabinet Side. (25lbs)
5. Reinforced Wall, Bathroom Wall, Face Side. (25lbs)
6. Reinforced Wall, Drawer Wall, Door Side. (25lbs)



1. 120V Outlet in Kitchen Face Wall just below Edge of Counter.
2. 120V Outlet in Passenger Side Bench.
3. 120V Outlet in Fridge Wall, Face Wall below Fridge.
4. 120V Outlet in Microwave Cabinet beside Fridge.
5. 120V Outlet in Wardrobe Wall, Bed Side, Driver's Side.
6. 120V Outlet in face of front Driver's Side Overhead Cabinet above bed.
7. 120V Outlet in Drawer Wall, Door Side.