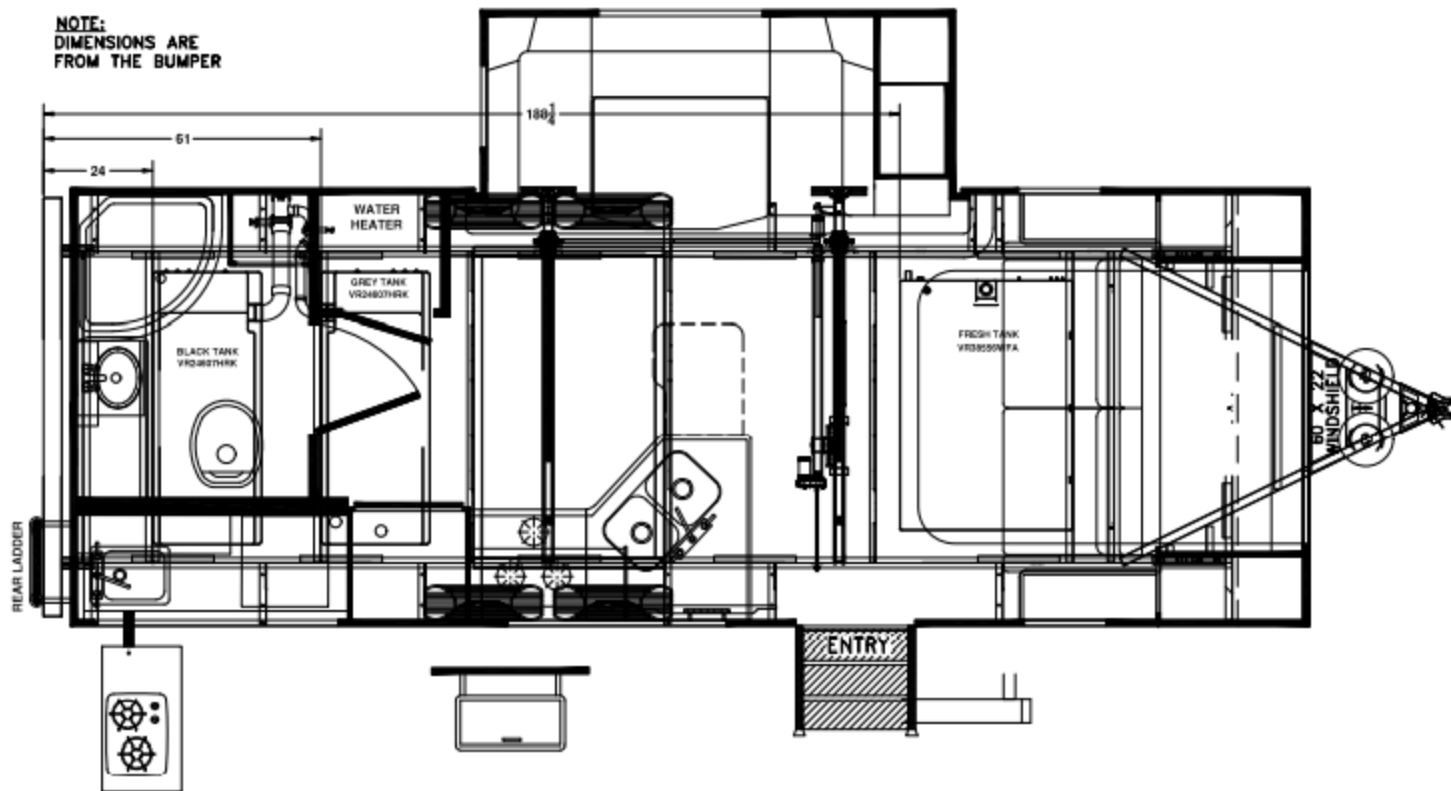


25BDS

2507S

NOTE:
DIMENSIONS ARE
FROM THE BUMPER

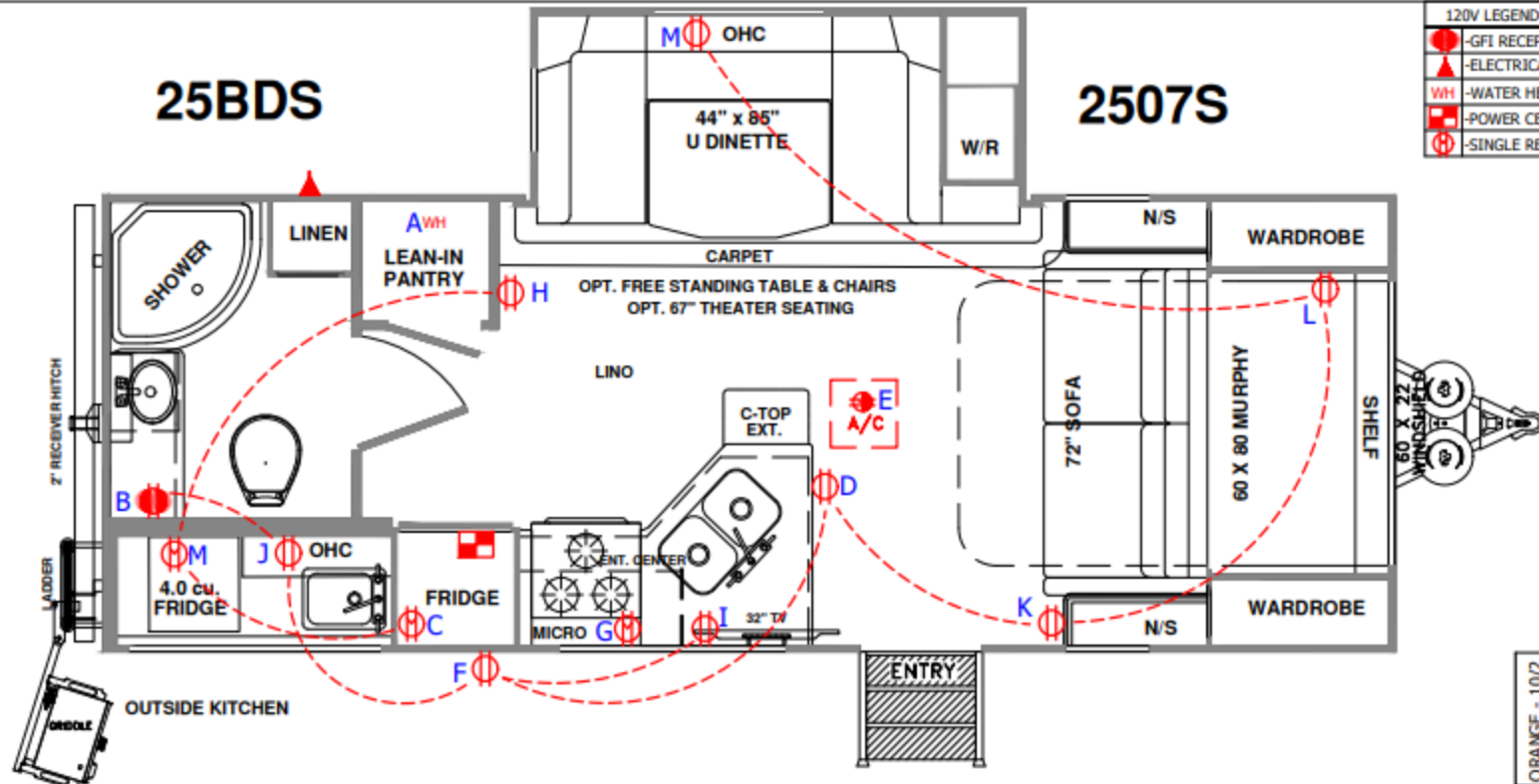


HOLDING TANK LOCATIONS

25BDS

2507S

120V LEGEND			
	-GFI RECEPT		-FIRE PLACE
	-ELECTRICAL ENTRY		-110V RECEPT
	-WATER HEATER		-AIR CONDITIONER
	-POWER CENTER		-120V FAN SWITCH
	-SINGLE RECEPT		-INVERTER INSTALLED

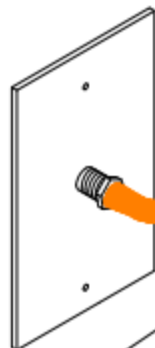


120V; 30A Power Diagram

RED - 14/2					
ORANGE - 10/2	WHITE - 14/2	GREEN - 14/2	PINK - 14/2	YELLOW - 12/2	BLUE - 14/2
30	15	15	15	20	15
MAIN	GENERAL	GFI	MICROWAVE	AC	CONVERTER
					WATER HEATER
1.	2.	3.	4.	5.	6.

WIRE RUN	ROCKWOOD - 2507S		FLAGSTAFF - 25BDS
A Water Heater	From Conv (Water Heater) Thru Cabinets	H Living Rm Rcpt	From Out Kitch Fridge Rcpt Thru Cabinets
B Bath GFI	From Conv (GFI) Thru Cabinets	I Entertainment	From Outside Rcpt Thru Cabinets
C Fridge Rcpt	From Conv (General) Thru Cabinets	J Out Kitch Rcpt	From Bath GFI Thru Cabinets
D Kitch Cab Rcpt	From Outside Rcpt Thru Cabinets	K OS Night St Rcpt	From Kitch Cab Rcpt Thru Floor
E AC	From Conv (AC) Thru Cabinets & Floor	L OOS Night St Rcpt	From OS Night St Rcpt Thru Floor
F Outside Rcpt	From Out Kitch Rcpt Thru Cabinets	M Out Kitch Fridge Rcpt	From Fridge Rcpt Thru Cabinets
G Micro Rcpt	From Conv (Microwave) Thru Cabinets	N Theater Seat Option Rcpt	From OOS Night St Rcpt Thru Frame to Slide

TENTCAMPERS
only have the orange
coming from the park cable

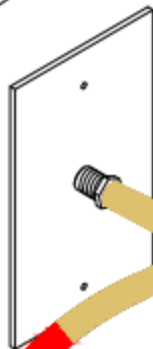


IN FROM PARK CABLE
(ORANGE)

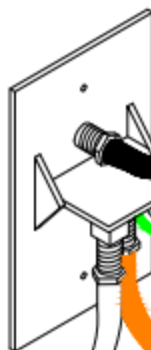


FROM SPLITTER TO OUTSIDE TV
(PURPLE)

FROM MAIN ENT TO
BEDROOM TV FOR HD/SAT
(TAN)
(RED - For Signature/Classic
Travel Trailers/Fifthwheels, and
Ultra Fifthwheels - Starting 889052)



IN FROM
ROOF ANTENNA
(WHITE)



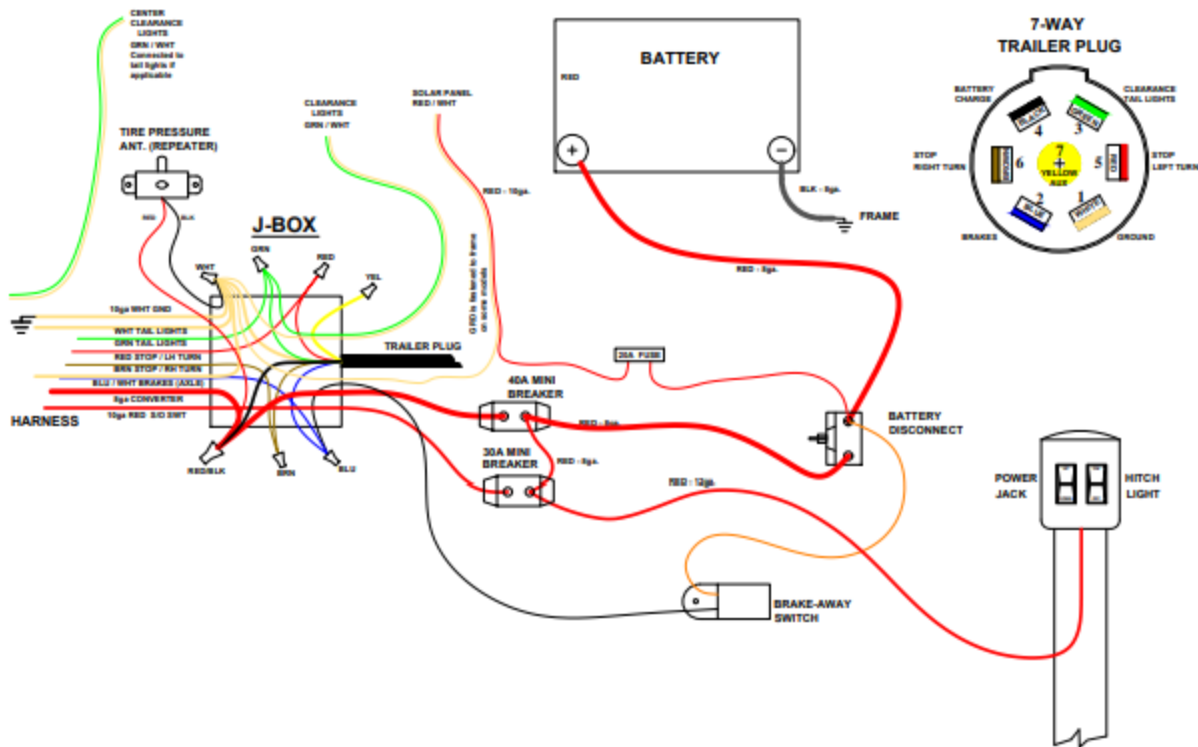
IN FROM
AUX/SAT
(BLACK)

POWER WIRE
(GREEN/WHITE)

OUT TO SPLITTER/ALL SETS IN UNIT
(GRAY)

IN FROM PARK CABLE
(ORANGE)

***Splitter is located
behind booster plate
in cabinet***

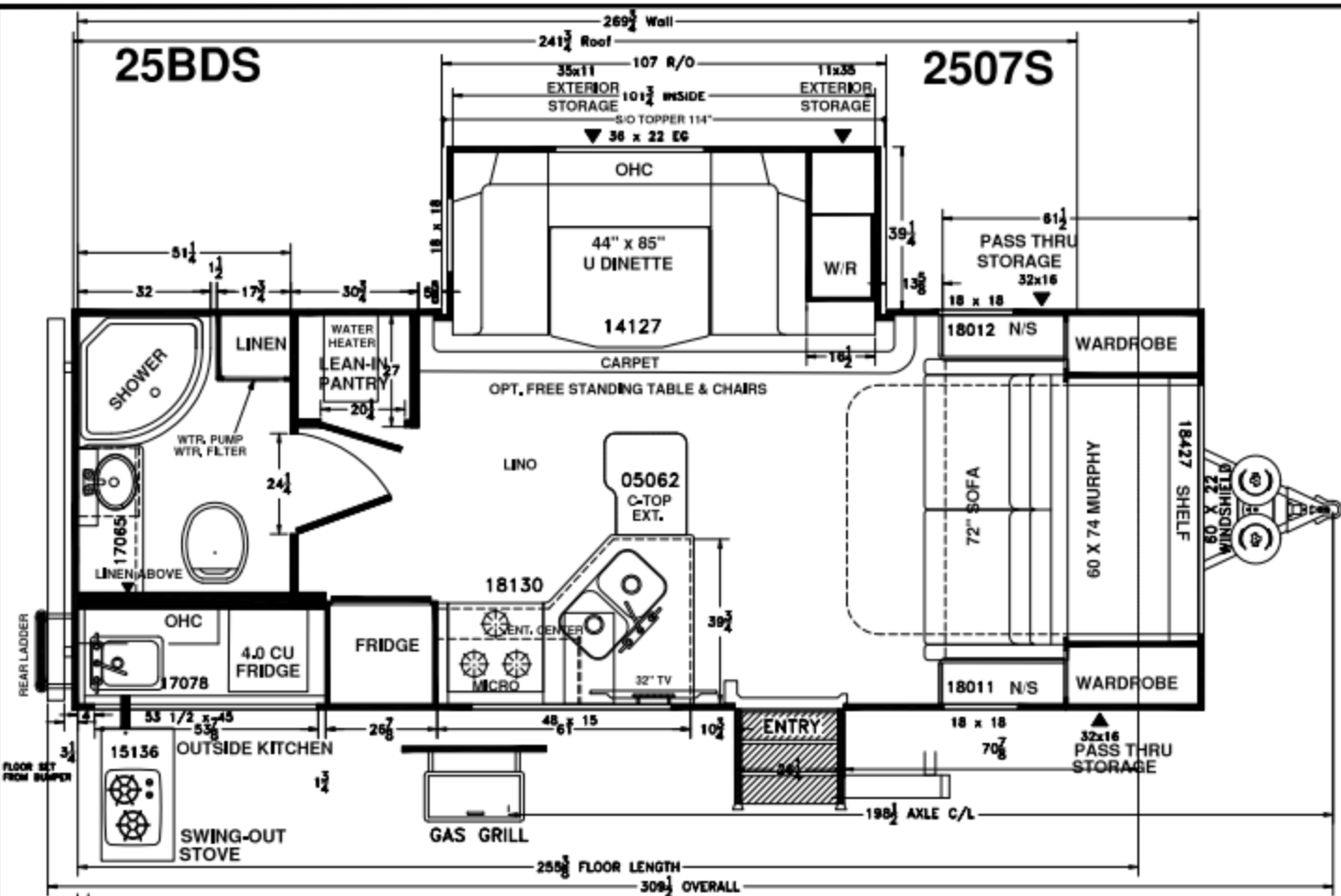


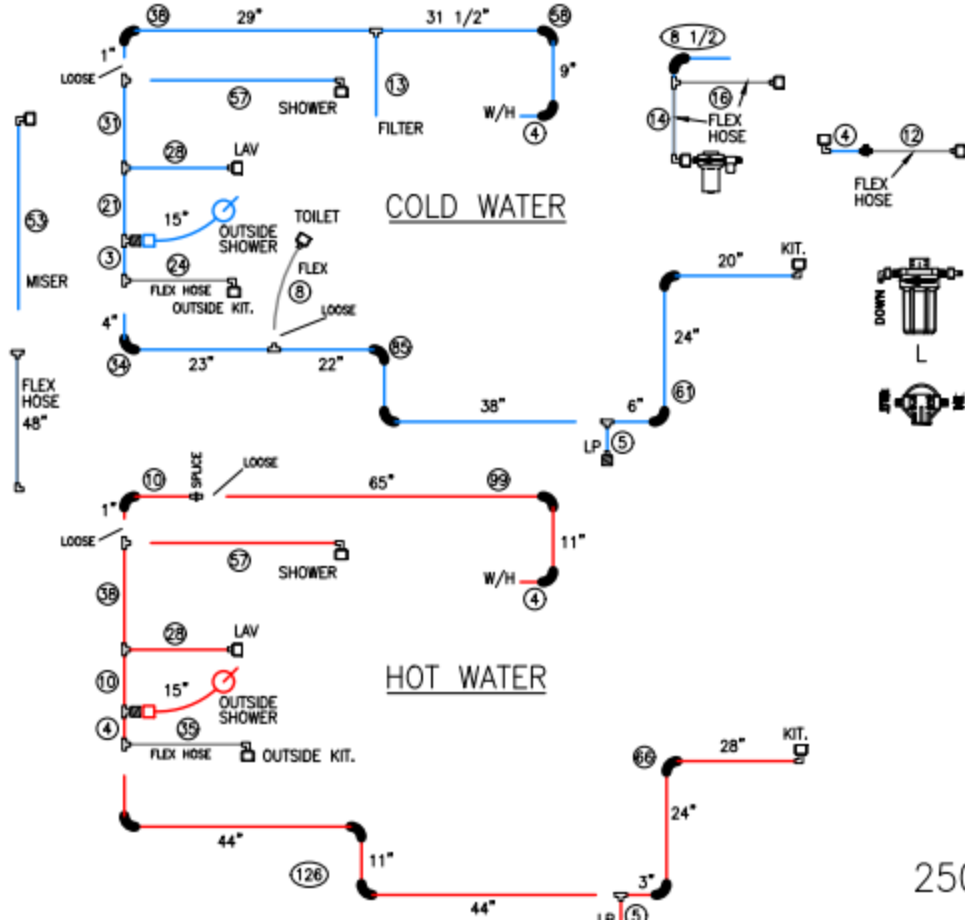
"The usage of the information on this document is subject to the Disclaimer on page 1."

PLANT 10T and 10D

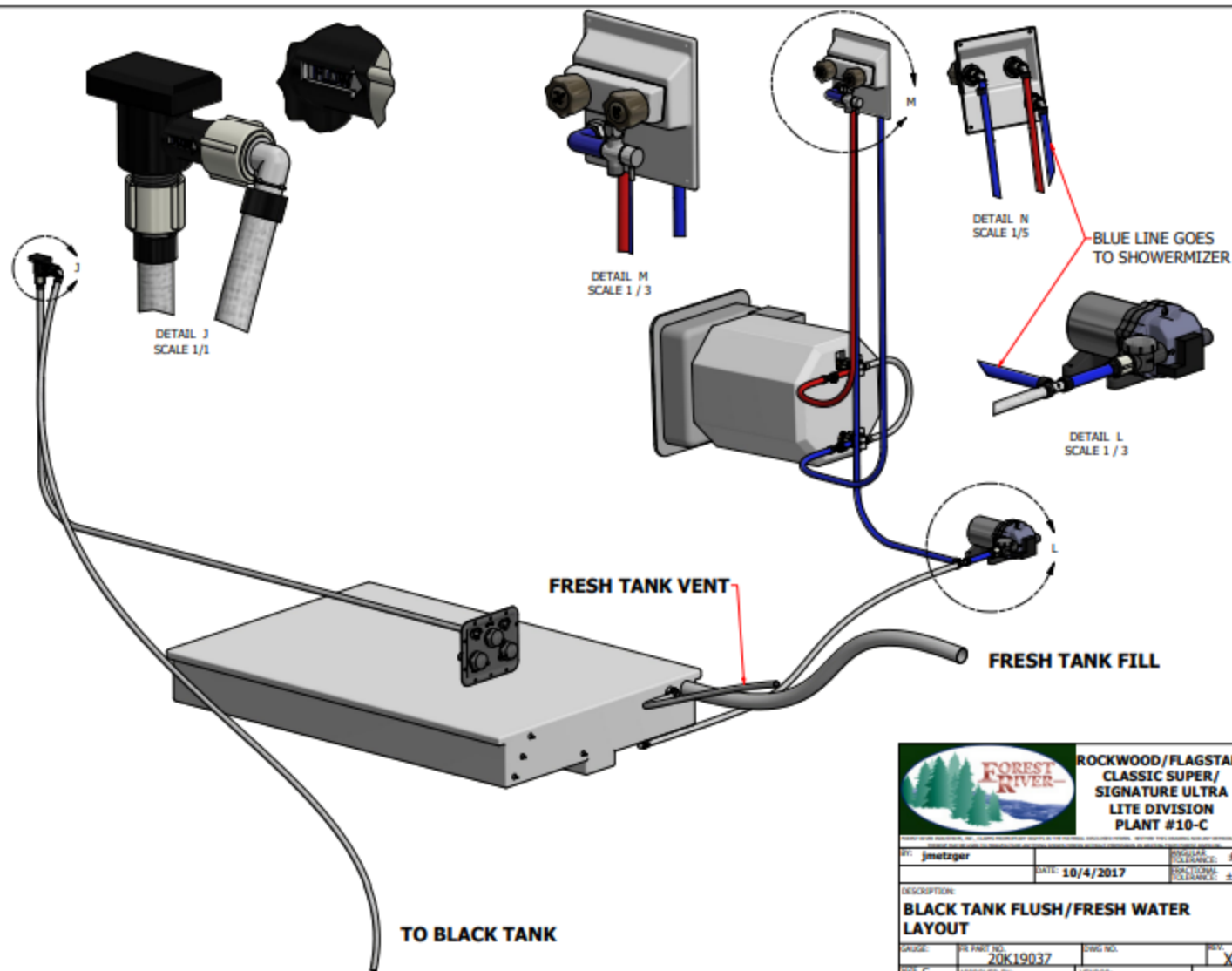
25BDS


2507S





2507S – 25BDS



		ROCKWOOD/FLAGSTAFF CLASSIC SUPER/ SIGNATURE ULTRA LITE DIVISION PLANT #10-C	
BY: <u>jmetzger</u>		DATE: <u>10/4/2017</u>	
DESCRIPTION: BLACK TANK FLUSH/FRESH WATER LAYOUT		REGULAR CLEANING: <u>#10</u> POLYURETHANE CLEANING: <u>± 1/4"</u>	
GRADE: <u>20K19037</u>	DWG. NO.: <u>20K19037</u>	REV: <u>X</u>	QUANTITY: <u>1</u>
MADE IN: <u>C</u>	APPROVED BY: <u></u>	VENDOR: <u></u>	QUANTITY: <u>1</u>

