

Eagle Travel Trailer and Fifth Wheel Interior Color Selections



Loredo Teal



Napa Valley Wine

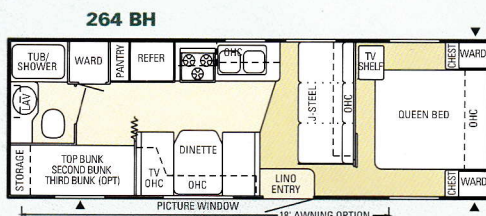
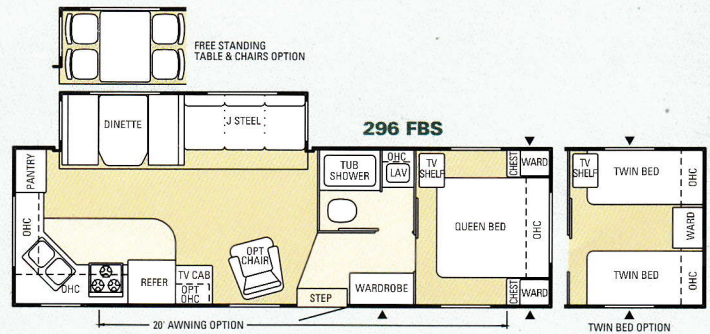
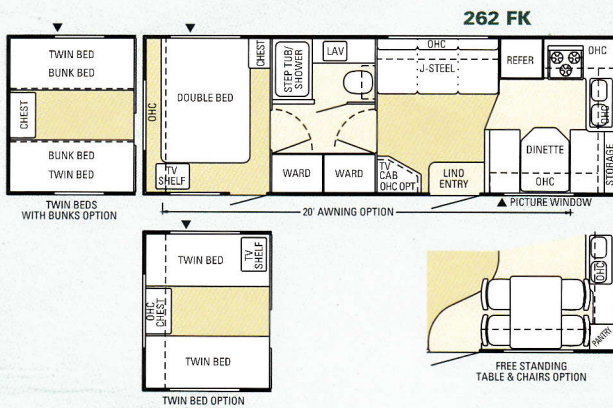
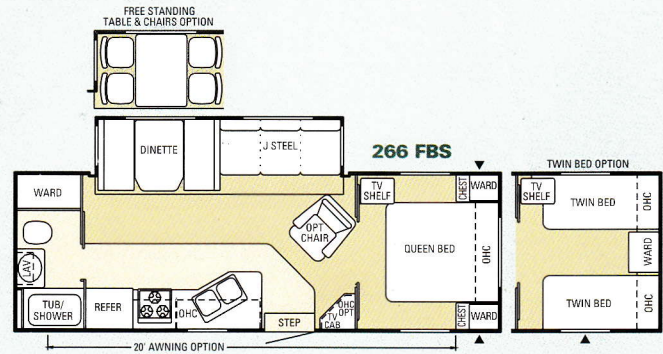
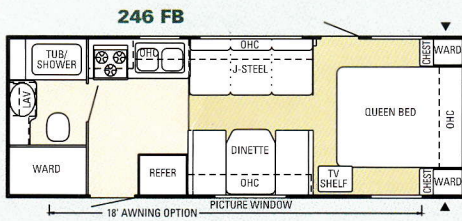


Porcelain Blue



Sedona Sage

2000 Eagle Travel Trailer Floor Plans



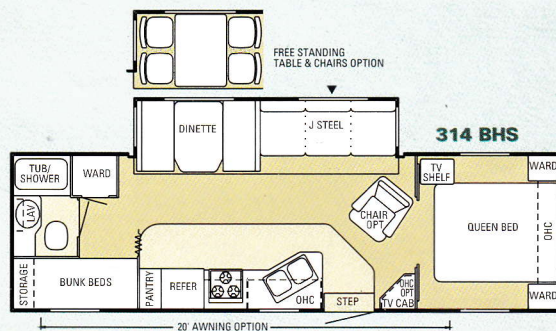
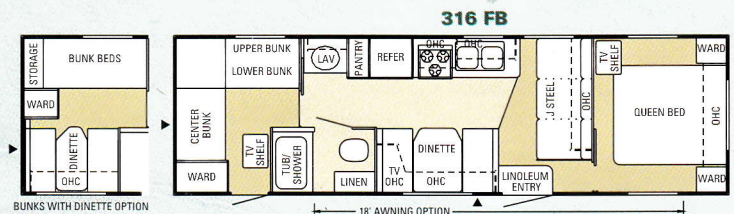
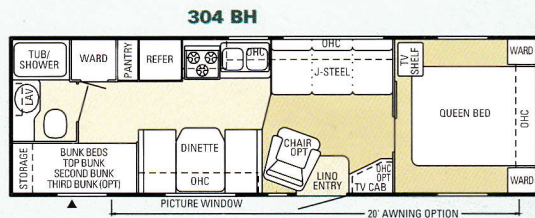
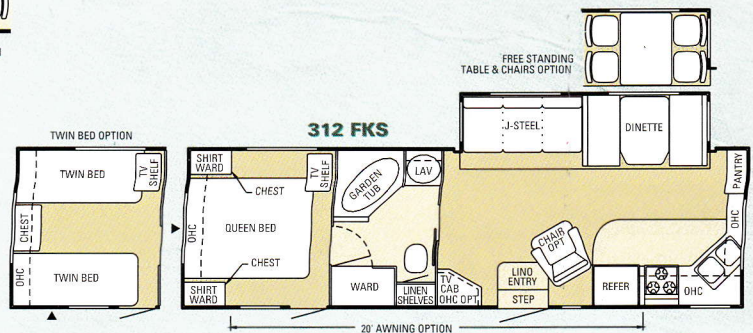
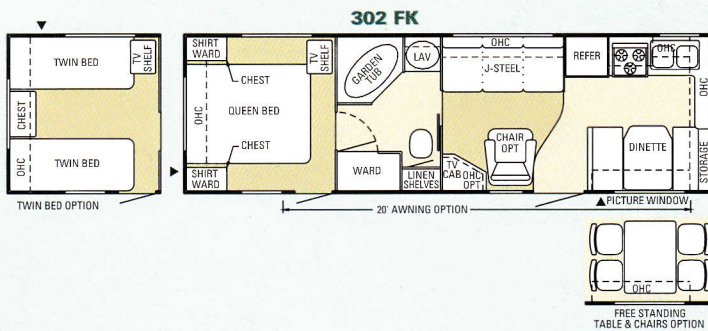
Step up to the extra-wide (30") entrance

door! Triple entry step on SuperSlide

models is strong, durable and

retracts with ease.

- BH** Bunk House
- FB** Front Bedroom
- FK** Front Kitchen
- S** Slideout
- ▲ Outside Storage Compartment



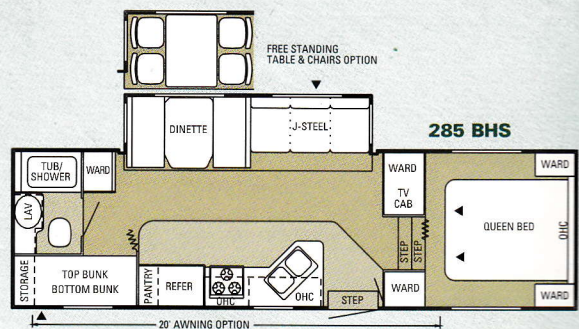
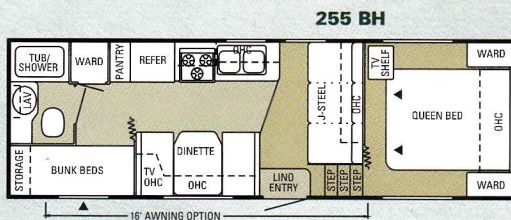
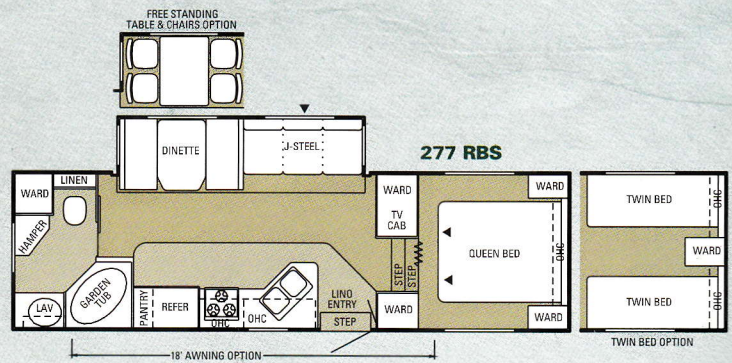
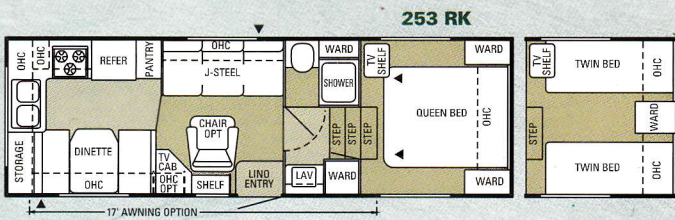
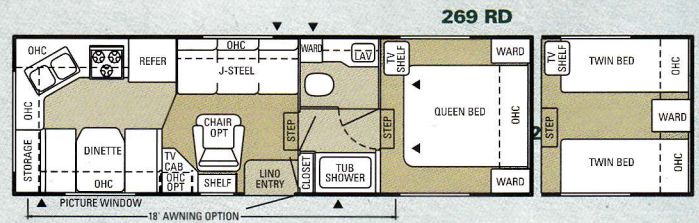
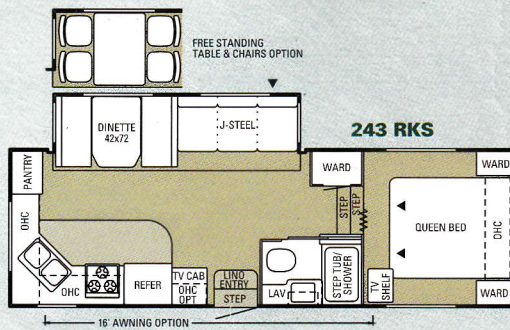
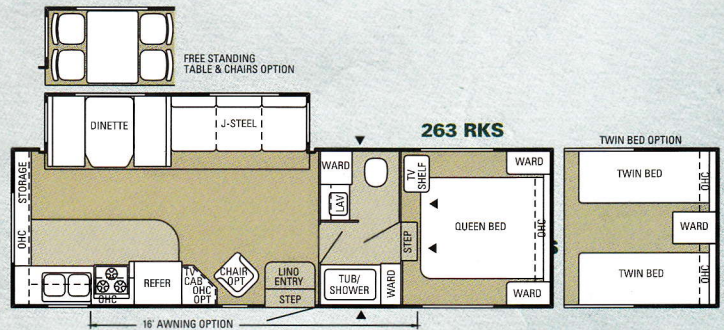
Model	Exterior Length	Exterior Height (including optional roof A/C)	Bedroom Interior Headroom	Unloaded Vehicle Wt. (Dry Wt. w/std. equip.) (lbs.)	Approx. Dry Hitch Wt. (lbs.)	6Gross Vehicle Wt. Rating (lbs.)	Net Carrying Capacity (w/out options) (lbs.)	Fresh Water Holding Tank (gals.)	Gray Water Holding Tank (gals.)	Toilet Waste Holding Tank (gals.)
246 FB	26'9"	119"	77"	4450	560	7300	2850	36	25	37
262 FK	27'11"	119"	77"	4660	535	7500	2840	36	29	37
264 BH	28'4"	119"	77"	4665	690	7500	2835	36	30	30
266 FBS	28'4"	129"	77"	5875	955	8500	2625	36	44	44
296 FBS	30'11"	129"	77"	6400*	960*	8500	2100*	50*	72*	37*
302 FK	30'6"	119"	77"	4810	750	7600	2790	36	29	37
304 BH	30'6"	119"	77"	4820	785	7600	2780	36	30	30
312 FKS	31'11"	129"	77"	6780	1035	9900	3120	36	58	37
314 BHS	31'8"	129"	77"	6405	928	9400	2995	36	30	42
316 FB	31'11"	119"	77"	5710	760	8000	2830	36	37	37

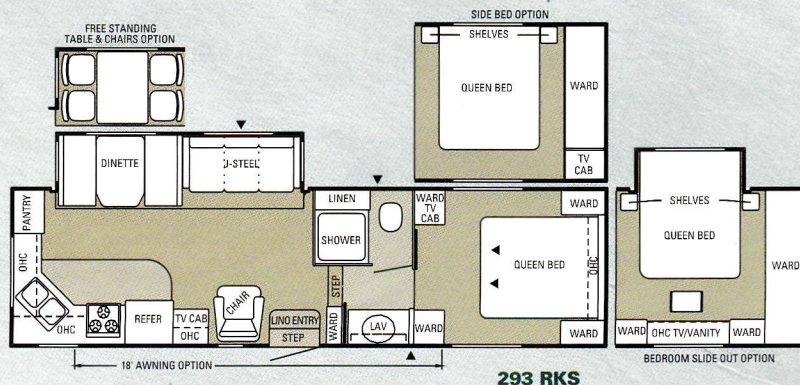
*Estimated



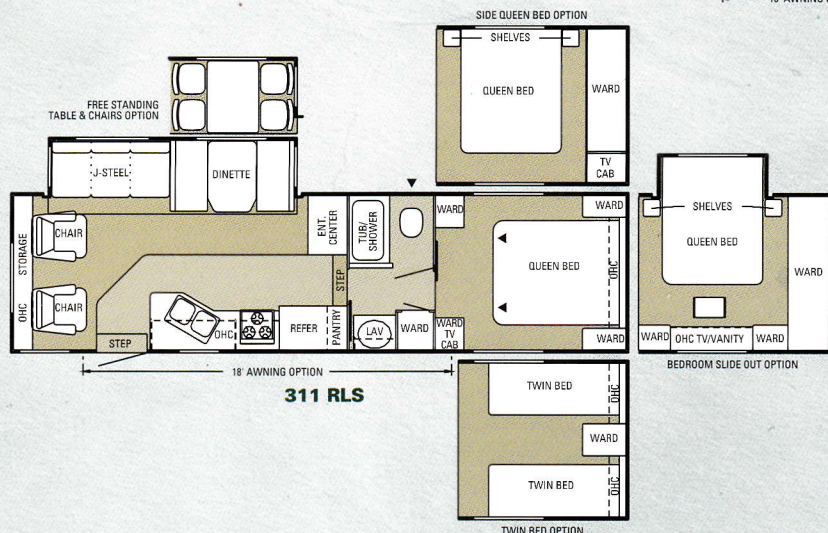
On most fifth wheel models, dual gas bottles are tucked away in this handy side compartment for safe storage, easy access.

2000 Eagle Fifth Wheel Floor Plans

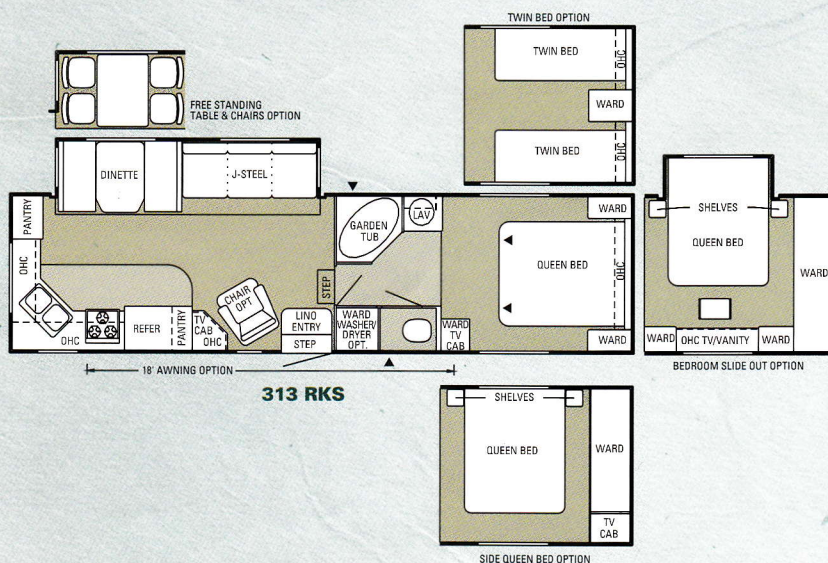




293 RKS



311 RLS



313 RKS

- BH Bunk House
- RB Rear Bathroom
- RD Rear Dinette
- RK Rear Kitchen
- RL Rear Living Room
- S Slideout
- ▲ Outside Storage Compartment

Model	Exterior Length	Exterior Height (including optional roof A/C)	Bedroom Interior Headroom	Unloaded Vehicle Wt. (Dry Wt. w/std. equip.) (lbs.)	Approx. Dry Hitch Wt. (lbs.)	Gross Vehicle Wt. Rating (lbs.)	Net Carrying Capacity (w/out options) (lbs.)	Fresh Water Holding Tank (gals.)	Gray Water Holding Tank (gals.)	Toilet Waste Holding Tank (gals.)
243 RKS	26'3"	135"	51"	6210	1107	9400	3190	50	67	37
253 RK	25'11"	122"	44"	4865	970	7500	2635	30	35	35
255 BH	25'11"	122"	44"	4870	965	7500	2630	36	30	30
263 RKS	28'1"	138"	63"	6710	1050	9995	3285	50	67	37
269 RD	26'11"	132"	63"	5300	1100	8500	3200	30	67	37
277 RBS	28'11"	138"	63"	6885	1150	9995	3110	50	43	43
285 BHS	29'3"	138"	63"	7030	1135	9995	2965	50	37	37
293 RKS	30'10"	138"	72"	7710	1380	11,500	3790	50	72	37
311 RLS	31'5"*	138"*	72"*	7240*	1425*	11,500*	4260*	50*	72*	37*
313 RKS	32'6"	138"	72"	7395	1400	11,500	4105	50	72	37

*Estimated

2000 Eagle Travel Trailer and Fifth Wheel Standard and Optional Features

Exterior Features	Bathroom	Optional Equipment
Stabilizer jacks (slideout models) Radial tires Lockable storage compartment(s) w/grab handles Polyflex underbelly covering Fiberglass stoneguard on front window (travel trailers) Retractable double entrance step (triple step on slideout models) 12V hitch light Patio light w/inside switch 30" white-framed fiberglass entry door (most models) Radius-cornered awning windows Dead-bolt lock on entrance door Hitch safety chains (travel trailers) ABS double LP bottle cover (travel trailers) Bumper w/drain hose carrier Screened egress bunk windows	12V power vent w/frosted lens ABS tub/shower surround Garden tub (some models) Wood medicine cabinet w/mirror Shower curtain Towel holder	Raised-panel oak doors and drawers Dinette door and drawer Free-standing table and 4 chairs Swivel rocker (most models) Hide-a-bed sofa w/foot rest (most slideout models) Twin beds (some models) Front slideout bedroom (some models) Bi-fold shower door (most models) Mini blinds Tinted safety glass Fiberglass exterior sidewalls Rear stoneguard window awning (most models) Overhead cabinet above TV (most models) Battery-operated wall clock Stereo AM/FM cassette Stereo AM/FM CD Phone jack Bath skylight (most models) Outside shower Carefree® patio awning Large 8-cu.-ft. refrigerator (most models) Microwave oven w/carousel Central A/C w/wall thermostat Rubber roof Insulated holding tanks Flexfoil™ insulation package Roof ladder Extra roof insulation Spare tire and carrier Spare tire cover Coach battery (standard on all fifth wheels and all travel trailers with slideouts) Third bunk (some travel trailer models) 6-gal. gas/electric auto-ignition water heater Stabilizer jacks (non-slideout models) Electric and snap jacks (fifth wheels) Shock absorbers 4,000-watt generator (some fifth wheel models)
Heat, Power & Water	Living Room	
Twin 30-lb. LP-gas tanks w/regulator Water heater bypass kit Winterization kit City water hook-up Systems monitor panel Demand water pump Electrical junction box inside trailer 12V electrical system w/deluxe 110V, 45-amp. converter 6-gal. gas auto-ignition water heater 30-amp. power cord 110V exterior receptacle Auto-ignition furnace w/thermostat In-floor ducted heating LP leak detector Fire extinguisher	Oak-framed panel doors and drawers J-Steel™ convertible sofa Interior entrance door grab handle High intensity lighting package Linoleum entryway and stepwells (most models) Deep pile, trackless carpeting w/thick pad Coordinated decorator fabrics throughout Fabric-covered box valances, drapes and tie backs Roller shades Crank-up TV antenna w/signal booster Cable TV hook-up	
	Kitchen	
	Residential-style mixing faucet Residential-style sink Sink cover/cutting board Color-coordinated countertops Flush-mounted double door refrigerator Oversized oven Range hood w/light and fan Three-burner range w/9,000-BTU SuperBurner, piezo igniter Range cover Extra-long silverware drawer Deep, lipped overhead cabinets	
Bedroom		
Innerspring mattress Bed lifts up easily on struts, storage below Coordinated, quilted bedspread TV cabinet or flip-up TV shelf (most models) Accordion door to bedroom (some models)		



We Back What We Build!

The Jayco **2+3 Warranty** is a manufacturer's warranty. It doesn't come from your dealer or a third party, and it's not an extended warranty! It comes from the people who build Jayco recreational vehicles to the people who buy them. Each Jayco is warranted to the original purchaser for twenty-four (24) months from the date of purchase against defects in materials and workmanship. This is full hitch-to-bumper coverage on towables and bumper-to-bumper on motorized RVs. The Jayco warranty includes a three-year (3) structural guarantee. In addition, our warranty is transferable within the first two (2) years for a \$100 processing fee. Go ahead and compare the Jayco warranty with other manufacturers' warranties. You'll find it's the best in the business! For a copy of the warranty with full terms and conditions, ask your local Jayco dealer or visit our Web site.



HUFFY'S TRAILER SALES, INC.
 2419 RT. 88
 FINLEYVILLE, PA 15332
 724-348-6655 AND
 724-348-5353

See the above dealer for further information and prices.

Jafari — As a Jayco owner, you can be part of the Jayco Jafari International Travel Club. Ask your dealer about the Jafari "flight" in your area, write Jayco direct or visit our web site.

Please Note: All information in this brochure is the latest available at the time of publication approval. Jayco reserves the right to make changes and to discontinue models without notice or obligation. Pictures in this

brochure may show optional equipment. RVs built for sale in Canada may differ to conform to Canadian codes.

Printed on Recycled Paper.



Jayco, Inc.
 P.O. Box 460
 Middlebury, IN 46540
 www.jayco.com

