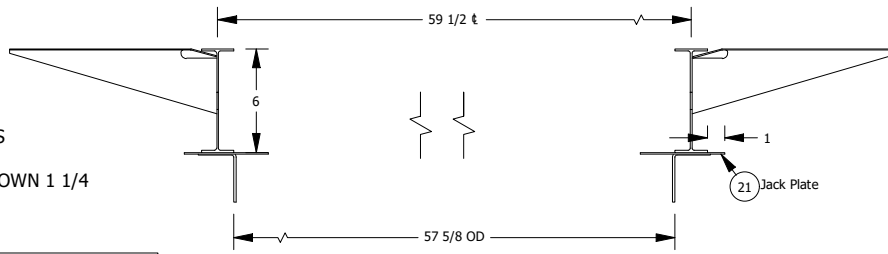


1. 6" I-BEAM FRAME
2. OUTRIGGERS AND XMC FLUSH WITH TOP OF MAINS
3. HOLES IN RAILS FOR SPARE TIRE WINCH
4. 2 x 2 x 35 ANGLE WELD TO BACK OF FRONT XMC DOWN 1 1/4



**GEO/ E - PRO**  
**MODELS:**  
**G15TB - E15TB**



**ROCKWOOD/FLAGSTAFF**  
**GEO/ E - PRO**  
**DIVISION**  
**PLANT # 10G**

FOREST RIVER INDUSTRIES, INC. CLAIMS PROPRIETARY RIGHTS IN THE MATERIAL DISCLOSED HEREIN. NEITHER THIS DRAWING NOR ANY REPRODUCTION THEREOF MAY BE USED TO MANUFACTURE ANYTHING SHOWN HEREON WITHOUT PERMISSION IN WRITING FROM FOREST RIVER INC.

BY: **JPM** DATE: **2/19/2021** GAGE: APPROVED BY:

ANGULAR TOLERANCE: +/- 1' FRACTIONAL TOLERANCE: +/- 1/16 CAMBER: SIZE: **A**

DESCRIPTION:

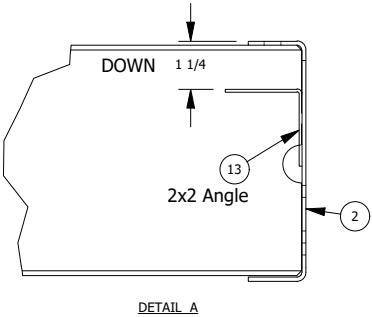
**FRAME ASSEMBLY (6" I-BEAM)**

REV: **B** VENDOR NO: **LCI#2021015166** SHEET 1 OF 3 DRAWING NUMBER: **00B21076**

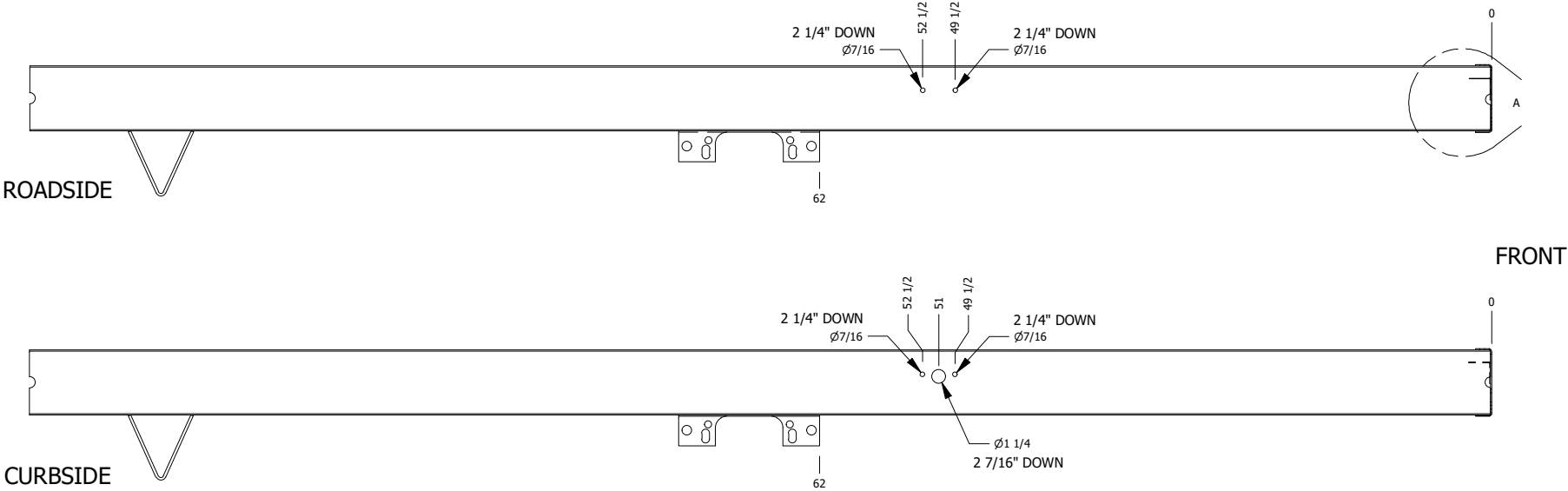
REVISION HISTORY				
REV	UNIT#	DESCRIPTION	DATE	BY
X		Initial Release	2/19/2021	JPM
A		Change axle mounting brackets to 284037	3/9/2021	JPM
B		Change outriggers to 701824 and 701949; move spare tire holes	3/16/2021	JPM

CAMBER SPECIFICATION TABLE		
TYPE	SPECIFICATIONS	TOLERANCE
RS MAIN	0"	+1/8" -0"
CS MAIN	0"	+1/8" -0"

Weld 2 x 2 x 35 -14ga. Angle to back of front XMZ



HOLES FOR MOUNTING SPARE TIRE WINCH



ROCKWOOD/FLAGSTAFF  
GEO/ E - PRO  
DIVISION  
PLANT # 10G

FOREST RIVER INDUSTRIES, INC. CLAIMS PROPRIETARY RIGHTS IN THE MATERIAL DISCLOSED HEREIN. NEITHER THIS DRAWING NOR ANY REPRODUCTION THEREOF MAY BE USED TO MANUFACTURE ANYTHING SHOWN HEREON WITHOUT PERMISSION IN WRITING FROM FOREST RIVER INC.

BY: JPM DATE: 2/19/2021 GAGE: APPROVED BY:

ANGULAR TOLERANCE: +/- 1° FRACTIONAL TOLERANCE: +/- 1/16 CAMBER: SIZE: A

DESCRIPTION:

**FRAME ASSEMBLY (6" I-BEAM)**

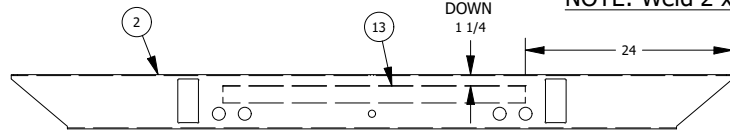
REV: B VENDOR NO: LCI#2021015166 SHEET 2 OF 3 DRAWING NUMBER: 00B21076

**GEO/ E - PRO**

**MODELS:  
G15TB - E15TB**

# FRONT CROSSMEMBER - C

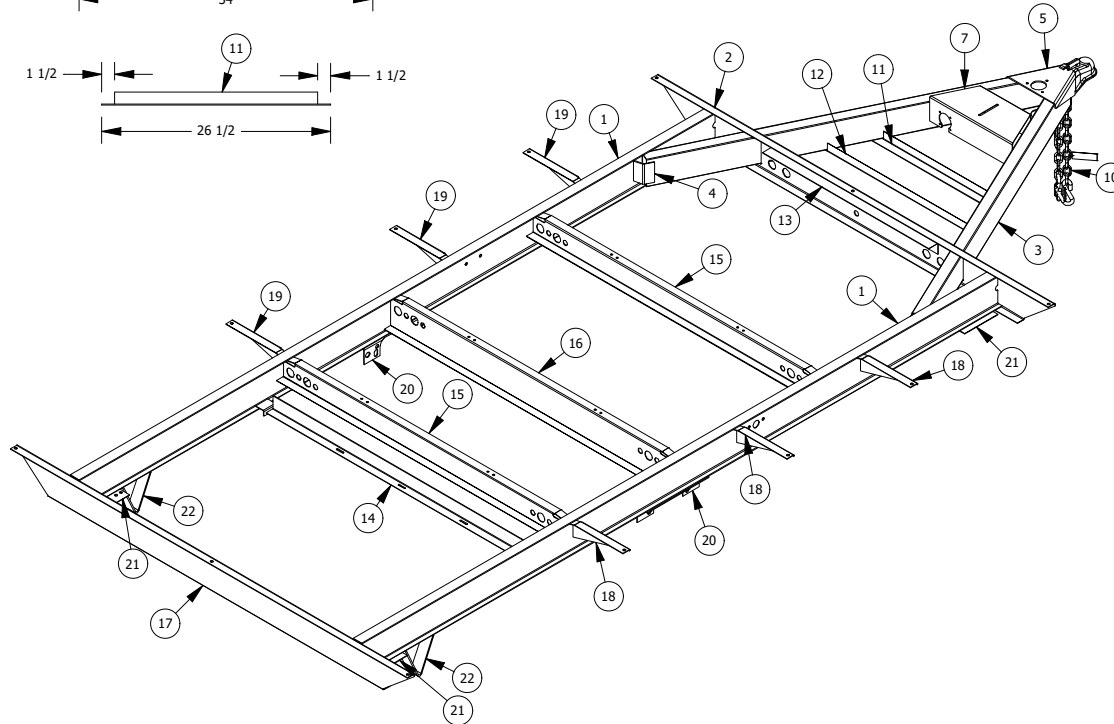
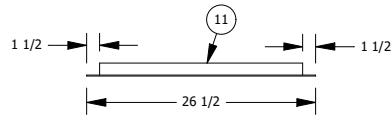
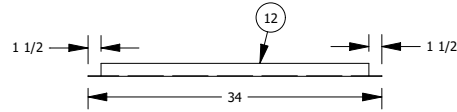
NOTE: Weld 2 x 2 x 35 -14ga. Angle to back of front XMZ



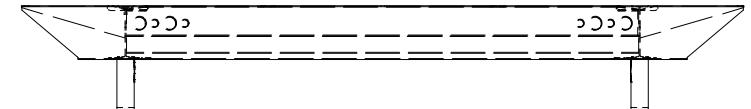
## AXLE BRACKET



## ANGLES FOR BATTERY



## REAR VIEW



Parts List			
ITEM	QTY	DESCRIPTION	PART NUMBER
1	2	I-BEAM - 6 x 1.875 x 134.75	6" I-Beam
2	1	FRONT XMC - C 1 1/2 x 6 1/4 X 83 1/2 #729959	02D19022
3	2	TUBE, 2 x 5 x 65 - 11ga.	11ga.
4	2	Angle 1.75 x 1.75 x L3.625 - 7ga.	804352
5	1	2 5/16" 14000# COUPLER	135430
6	1	BOTTOM JACK PLATE 8 1/2 x 5 3/8 x 10ga.	02D11034
7	1	LP BOTTLE RISER BRACKET	861756
8	1	2.01 x 2.01 x .06 x L4.25 Draw Bar front plate (16ga)	LCI # 104918
9	1	CHAIN ELBOW	119124
10	2	27" SAFETY CHAIN 7600#	128657
11	2	1 1/2 x 1 1/2 x 26 1/2 -14ga. Angle	14ga. - ANGLE
12	1	1 1/2 x 1 1/2 x 34 -14ga. Angle	14ga. - ANGLE
13	1	2 x 2 x 35 - 14ga. Angle	2x2 -14ga ANGLE
14	1	FRESH TANK SUPPORT ANGLE LCI#729378	02D19003
15	2	XMZ 3 1/2 x 1.5 x 1.5 x 59 1/4 - 14ga. LCI#729376	02D19004
16	1	XMZ 5 1/2 x 1.465 x 1.465 x 59 1/4 - 14ga. #729960	02D19023
17	1	REAR CROSS MEMBER - Z 1 1/2 x 6 1/4 x 1 1/2 x 83 1/2	2020133347
18	3	R.H. OR 3 3/4 x 1 1/2 x 12	701824
19	3	L.H. OR 3 3/4 x 1 1/2 x 12	701949
20	2	2.19 x 2.87 x 13 -10ga SINGLE AXLE HANGER	284037
21	4	JACK PLATE 4 7/8" x 7" -11ga LCI#281948	02C16029
22	2	6 x 6 x 2" - 1/4 SKID BAR LCI#281989	02D11102

GEO/ E - PRO

MODELS:  
G15TB - E15TB



ROCKWOOD/FLAGSTAFF  
GEO/ E - PRO  
DIVISION  
PLANT # 10G

FOREST RIVER INDUSTRIES, INC. CLAIMS PROPRIETARY RIGHTS IN THE MATERIAL DISCLOSED HEREIN. NEITHER THIS DRAWING NOR ANY REPRODUCTION THEREOF MAY BE USED TO MANUFACTURE ANYTHING SHOWN HEREON WITHOUT PERMISSION IN WRITING FROM FOREST RIVER INC.

BY: JPM	DATE: 2/19/2021	GAGE:	APPROVED BY:
ANGULAR TOLERANCE: +/- 1'	FRACTIONAL TOLERANCE: +/- 1/16	CAMBER:	SIZE: A
DESCRIPTION: <b>FRAME ASSEMBLY (6" I-BEAM)</b>			
REV: B	VENDOR NO: LCI#2021015166	SHEET 3 OF 3	DRAWING NUMBER: 00B21076